

North Athens Neighborhood Ila Road Sidewalk Improvements

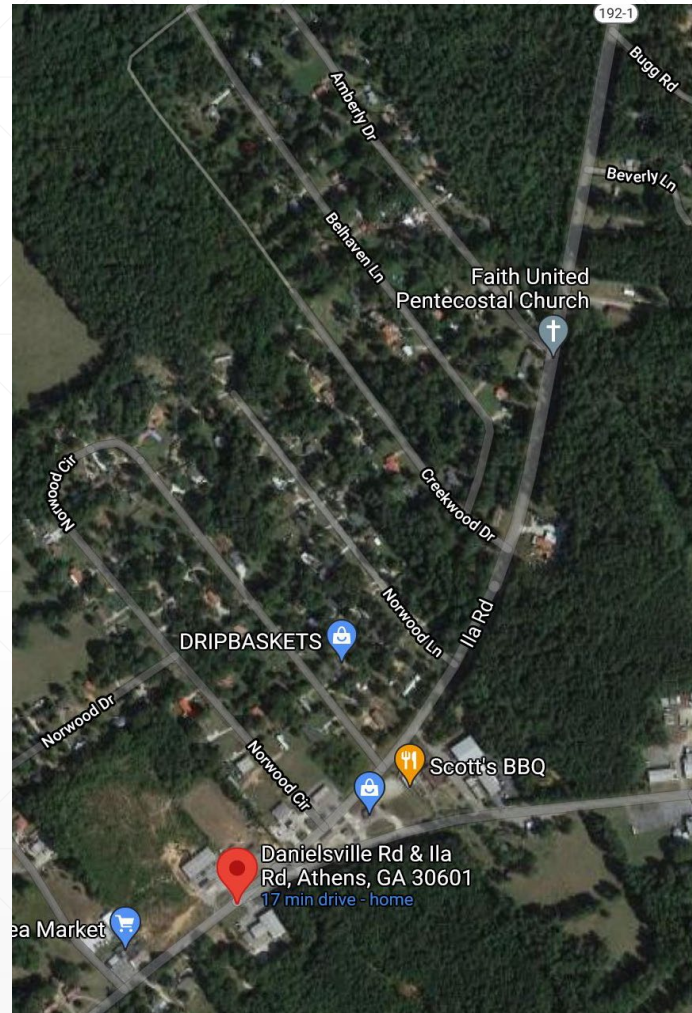
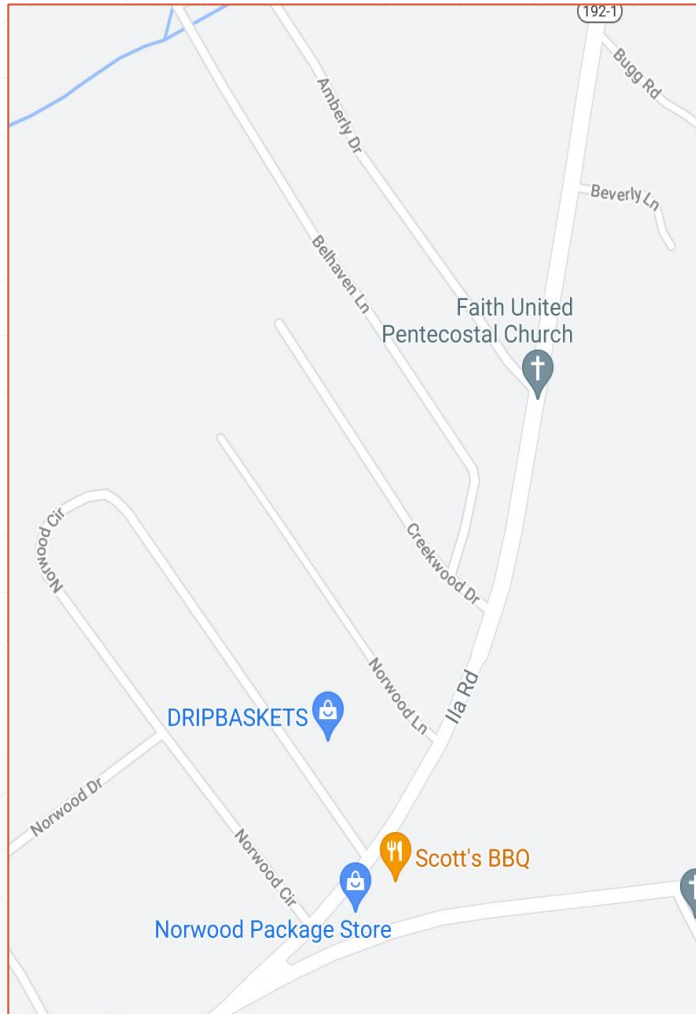
TSPLOST 2023 – Project No. 46

Project Scope

Improve pedestrian connectivity to goods and services, grocery, and other services along the Danielsville Road/Ila Road corridor.

- Ila Road - Sidewalk or Multi-use trail along Ila Road from Amberly Drive to Danielsville Road.
 - Include accessibility ramps, crosswalks and improved street lighting.
 - Approximately 2,800 LF of 5-foot-wide sidewalk
-

Project Area



- Improve pedestrian connectivity to goods and services, grocery, and other services along the Danielsville Road/Ila Road corridor.
- Sidewalk or Multi-use trail along Ila Road from Amberly Drive to Danielsville Road.
- Include accessibility ramps, crosswalks and improved street lighting.
- Approximately 2,800 LF of 5-foot-wide sidewalk

Project Area



- At any given time, day or night, you can see people walking, jogging, or riding their bike along the shoulders of streets and roads in North Athens, such as Ila Road, that have no sidewalks. You can observe very dangerous situations such as people carrying arms of groceries or moms pulling children in wagons behind them along the white line while traffic speeds by at 45 mph.

Ila Road from Amberly Drive to Danielsville Road



- Sidewalk or Multi-use trail along Ila Road from Amberly Drive to Danielsville Road.
- Include accessibility ramps, crosswalks and improved street lighting.



Ila Road @ Danielsville Road



- Improve pedestrian connectivity to goods and services, grocery, and other services along the Danielsville Road/Ila Road corridor.
- Include accessibility ramps, crosswalks and improved street lighting.

In what specific ways will this project “Close the Equity Gap” in Athens-Clarke County, by improving the Equitability of Capital Improvements throughout the entire community?

The project provides capital improvements to the North Athens Neighborhood, a traditionally underserved area of our community.

- The project invests in an improved pedestrian experience for residents of North Athens by adding and upgrading infrastructure along the important Ila Road corridor that feeds directly into Danielsville Road.
 - Through capital investments the project improves the access of North Athens residents to goods and services.
 - The project invests in infrastructure improvements that address accessibility issues and serious gaps in connectivity.
 - The project invests in infrastructure improvements that address health and safety concerns of existing conditions.
-

How will this project address one or more of the Mayor and Commission approved Strategic Commitments and Project Selection Criteria?

- **Protects the community's existing Transportation Infrastructure Investments and Reduces the Pavement Maintenance deficit** by reducing dependencies on existing roadway infrastructure and reducing vehicular wear on existing facilities.
- **Promotes the Upgrade and Continued Use of Alternative Transportation Facilities and Increased Access to existing public facilities** by promoting bike and pedestrian connectivity between residents and the goods and services at the intersection of Ila Road and Danielsville Road.
- **Maintains or Improves air quality, reduces vehicle miles traveled and traffic congestion, and reduces time spent traveling in vehicles** by encouraging bike and pedestrian modes of transportation, reducing vehicular trips, and reducing CO2 emissions.

(continued)

How will this project address one or more of the Mayor and Commission approved Strategic Commitments and Project Selection Criteria?

- **Promotes Health and Safety** by encouraging bike and pedestrian modes of transportation, active mobility, and opportunities for exercise.
 - Directly supports **sidewalk and multi-use trail construction** and connectivity to public community centers.
-

What aspects of this project will focus on improving the “Triple Bottom Line” (Impact on Economic Prosperity, Social Well-being, and the Environment)?

- This project positively impacts **Economic Prosperity** and **Social Well-being** by encouraging greater bike and pedestrian access to goods and services and community centers thereby increasing economic opportunities and improving equitable access to public facilities for traditionally underserved residents.
 - This project positively impacts the **Environment** by encouraging pedestrian modes of transportation thereby reducing vehicular traffic and CO2 emissions.
-

Q&A

