

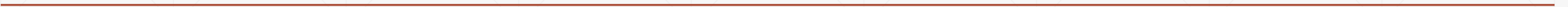
North Athens Neighborhood Pittard Road Bus Shelters

TSPLOST 2023 – Project No. 53

Project Scope

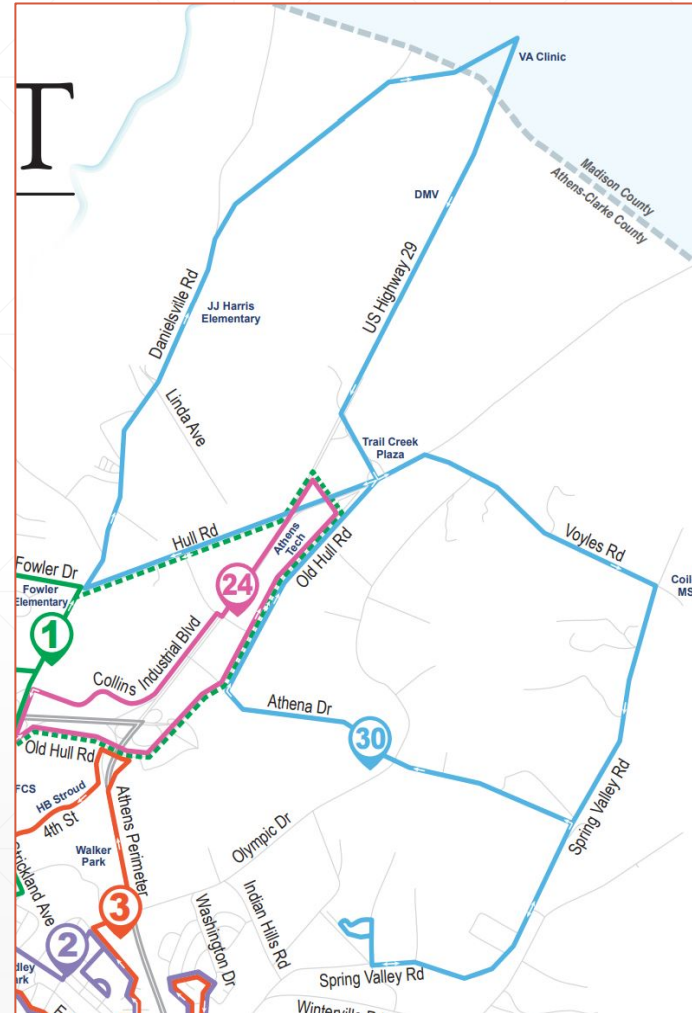
Improve access to bus routes and improve bus shelters along North Athens Circulation Bus Route.

- Extend bus route to Pittard Road and include bus shelter.



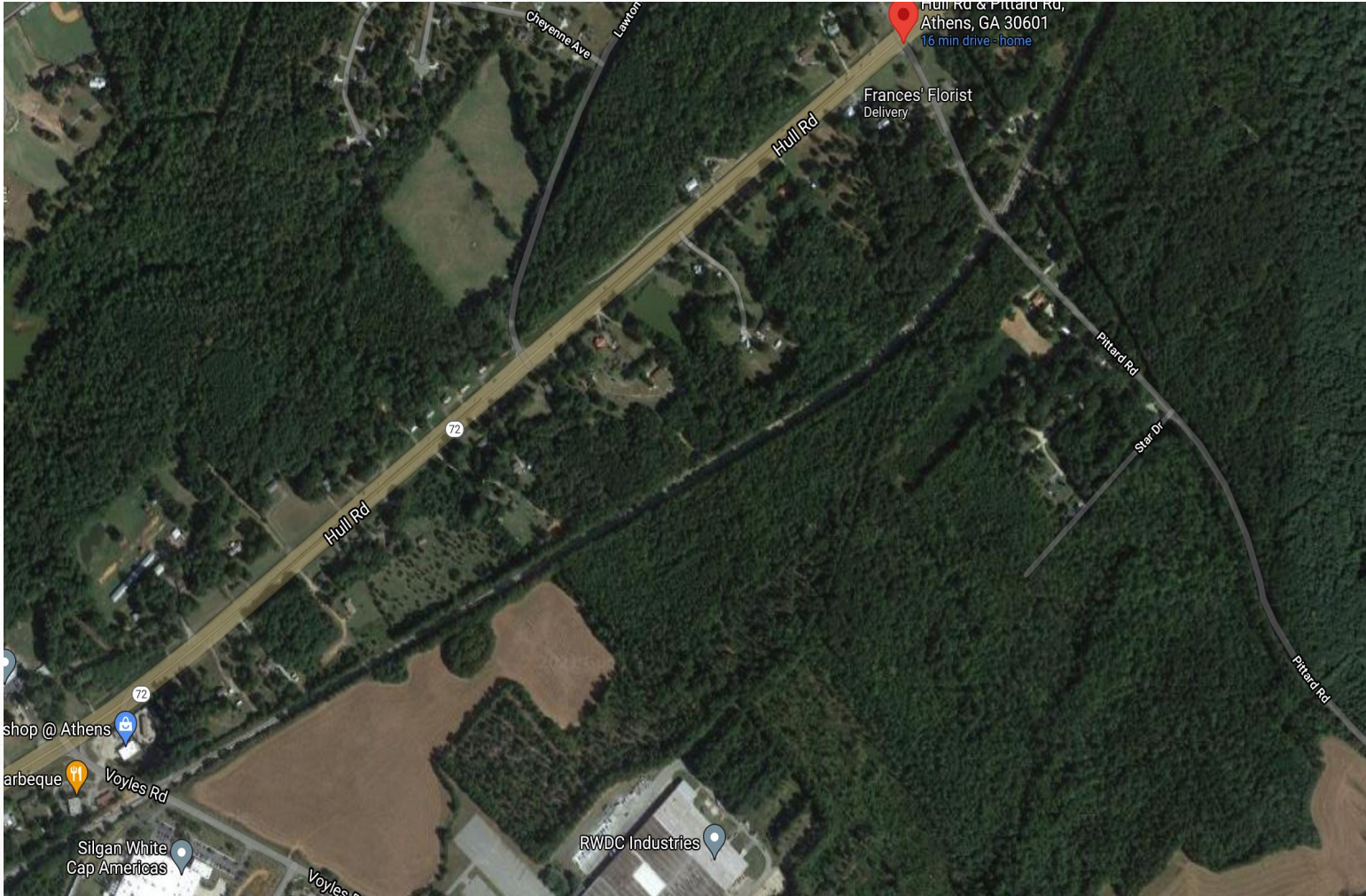
Athens Transit System

| ROUTES & SERVICE LEVELS | | |
|-------------------------|-------------------------------|--|
| 1 | North Ave | 7 DAYS + EVENINGS Modified Evening & Weekend Service |
| 2 | East Athens / Nellie B | 7 DAYS + EVENINGS |
| 3 | East Athens Northside | WEEKDAYS |
| 5 | Beechwood / Baxter | 7 DAYS + EVENINGS |
| 6 | Hancock / Baxter | 7 DAYS + EVENINGS Modified Evening Service |
| 7 | Prince Ave | 7 DAYS + EVENINGS |
| 8 | Barber / Vincent | 7 DAYS + EVENINGS |
| 9 | Macon Hwy / 5 Pts | WEEKDAYS |
| 12 | Riverbend | WEEKDAYS |
| 14 | Lumpkin / S Milledge | WEEKDAYS |
| 20 | Georgia Square Mall | 7 DAYS + EVENINGS Modified Evening & Weekend Service |
| 21 | West Athens | WEEKDAYS |
| 22 | East Side Circulator | WEEKDAYS |
| 24 | Athens Tech | WEEKDAYS + EVENINGS |
| 25 | Lexington / Gaines School | 7 DAYS + EVENINGS Modified Evening & Weekend Service |
| 26 | College Station | WEEKDAYS |
| 27 | Barnett Shoals / Cedar Shoals | 7 DAYS + EVENINGS |
| 28 | E Campus / College Station | WEEKDAYS LTD Peak Drive Time while USA is in Session Only |
| 30 | North Side Circulator | 7 DAYS + EVENINGS Call for Weekend Service |



- North Side (Athens) Circulator does not currently serve Pittard Road

Existing Gap from Voyles Road to Pittard



- Extend bus route to Pittard Road and include bus shelter.

In what specific ways will this project “Close the Equity Gap” in Athens-Clarke County, by improving the Equitability of Capital Improvements throughout the entire community?

The project provides capital improvements to the North Athens Neighborhood, a traditionally underserved area of our community.

- The project invests in infrastructure improvements that address accessibility issues and gaps in connectivity within and without the neighborhood.
 - The project invests in infrastructure improvements that increases access to and enhances the experience with local public transit.
 - The project invests in infrastructure that will greatly improve residents' access to community facilities and resources and commercial centers.
-

How will this project address one or more of the Mayor and Commission approved Strategic Commitments and Project Selection Criteria?

- **Reduces the Pavement Maintenance deficit** by encouraging alternative modes of transportation, thereby reducing vehicular wear and congestion on existing streets.
- **Promotes the upgrade and continued use of Alternative Transportation Facilities** by directly promoting improved bus shelters thereby encouraging ridership and use of alternative modes of transportation.
- **Promotes increased access to existing public facilities** by encouraging improvement of existing bus shelters adjacent to existing public facilities, thereby providing greater access to these public facilities, including, but not limited to Coile Middle School and other public facilities.

(continued)

How will this project address one or more of the Mayor and Commission approved Strategic Commitments and Project Selection Criteria?

- **Promotes increased usage of the Transit System, including improving Pedestrian access to Transit Facilities** by directly promoting improvements to existing bus stops, thereby increasing ridership by providing shelter during hot or inclement weather.
 - **Increases capital for Transit services or expands the Transit System** by directly increasing capital improvements for transit service.
 - **Maintains or Improves air quality, reduces vehicle miles traveled and traffic congestion, and reduces time spent traveling in vehicles** by encouraging ridership thereby reducing vehicular trips and CO2 emissions.
-

What aspects of this project will focus on improving the “Triple Bottom Line” (Impact on Economic Prosperity, Social Well-being, and the Environment)?

- This project positively impacts **Economic Prosperity** and **Social Well-being** by encouraging greater access to transit services, goods and services, and community centers, thereby increasing economic opportunities and improving equitable access to public facilities for traditionally underserved residents.
 - This project positively impacts the **Environment** by encouraging alternative modes of transportation thereby reducing vehicular traffic and CO2 emissions.
-

Q&A

