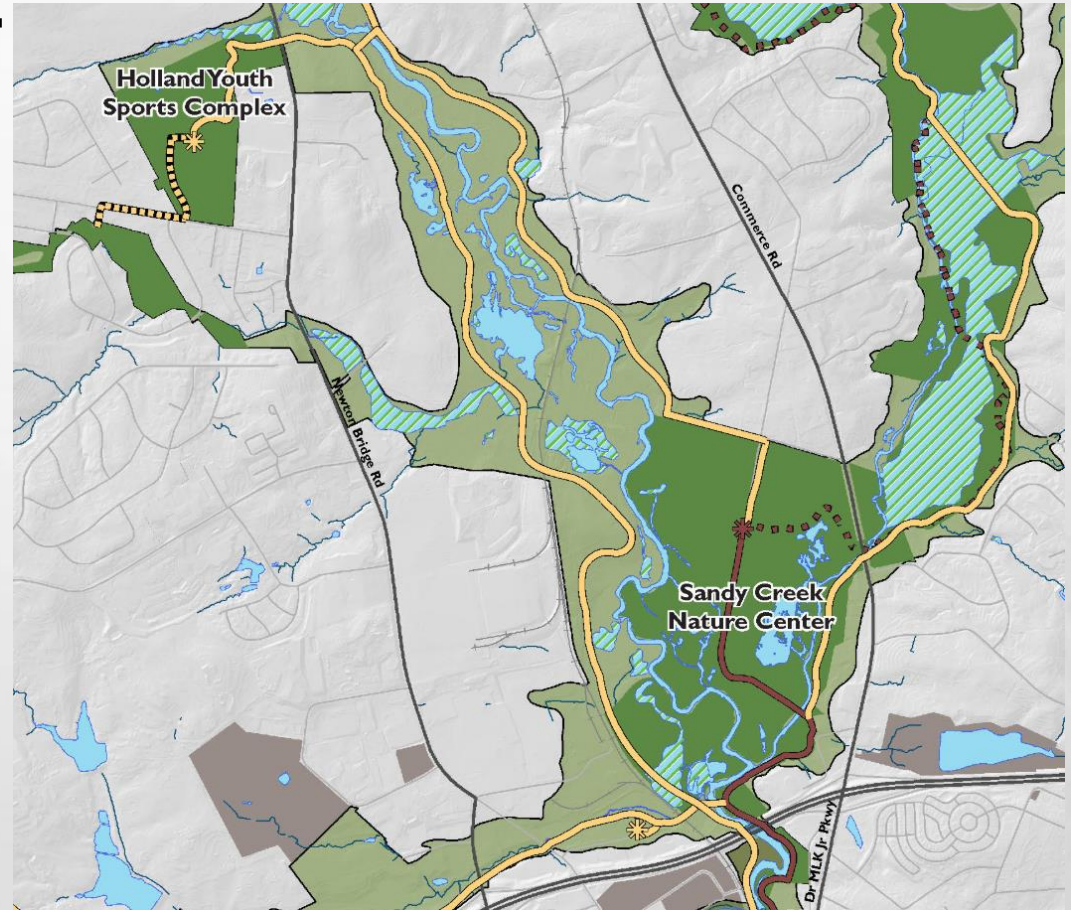


TSPLOST 2026 SUBMISSION: SANDY CREEK SOUTH LOOP BRIDGE



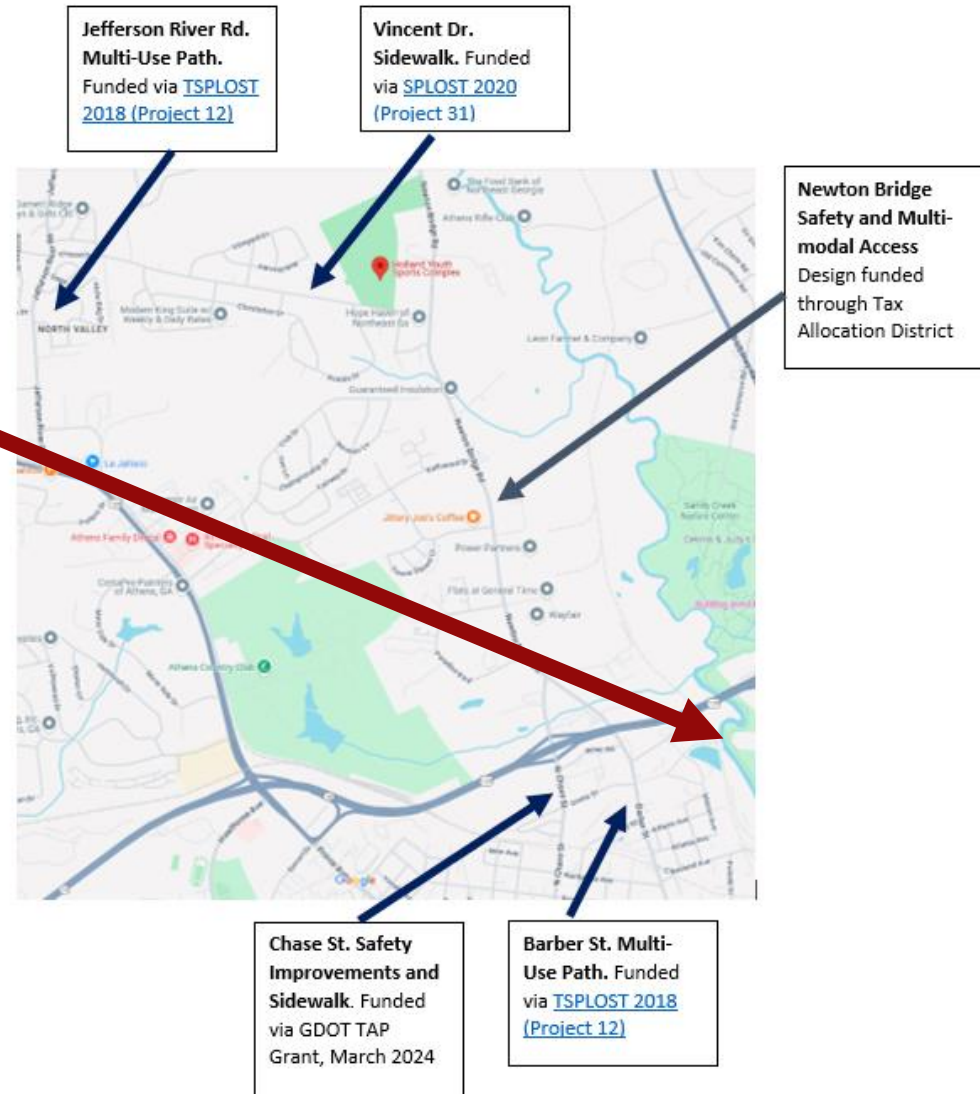
PROJECT HIGHLIGHTS...

- **THIS CONNECTION IS A LONGSTANDING ELEMENT OF THE GREENWAY NETWORK PLAN**
- **THERE IS CURRENTLY NO SAFE BIKE/PED CROSSING OF THE N. OCONEE RIVER BEYOND COLLEGE AVE.**
- **THIS CONNECTS TO THE FUNDED CHASE ST. AND BARBER ST. IMPROVEMENTS, & NEWTON BRIDGE IMPROVEMENTS FOR WHICH PLANNING FUNDS HAVE BEEN COMMITTED**



FUNDED PROJECTS ADJACENT...

BRIDGE LOCATION



PROJECT BENEFITS:

- **GREATLY EXPANDED ACCESS TO THE GREENWAY & SANDY CREEK NATURE CENTER FOR THOSE WEST OF THE RIVER; BARBER/TRACY ST./NEWTON BRIDGE AMENITIES FOR THOSE EAST OF THE RIVER**
- **WITHIN 1 ½ MILES OF THIS BRIDGE ARE: BURKS ELEM., ROLLING RIDGE, PRINCE AVE., RUTH ST., BRIDGEWATER, PROVIDING 3000+ RESIDENTS SAFE, EASY ACCESS ACROSS THE N. OCONEE.**

