

Athens-Clarke County Public Utilities Department

2025 Capital Improvements Element

Project
3-324

Project Name

Targeted Sanitary Sewer Flow Monitoring and Long-Term Sanitary Sewer Evaluation Survey (SSES) and Rehabilitation Program

Project Category

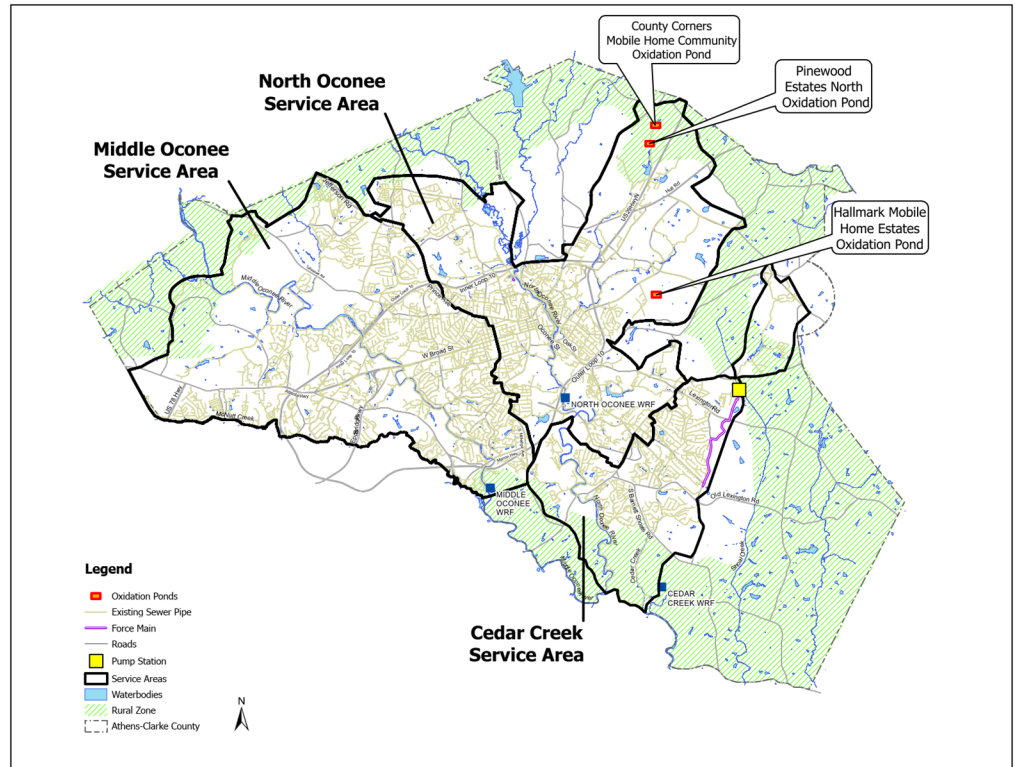
Rehabilitation and Replacement

Project Cost

\$5,000,000

Key Elements

1. Comprehensive sewer flow monitoring study
2. Maintain long term flow data at multiple permanent locations
3. Create sub-sewershed flow studies with portable flow monitors
4. Calibrate Sewer Models for increased accuracy and dependability
5. Future targeted SSES and rehabilitation on selected pipelines
6. Develop and prioritize future sewer replacement projects
7. Reduce sanitary sewer overflows



Project Description

Conduct sewer flow monitoring and analyze groundwater infiltration (GWI) and rainfall inflow and infiltration (RDII) by:

- Continuation of long term, permanent flow monitors
- Targeted sub-sewershed flow monitoring with multiple portable meters
- Sanitary Sewer Modeling Calibration
- Evaluation of AMI water meter data in conjunction with sewer flow data to determine I/I within a sub sewershed

Perform targeted SSES and rehabilitation on selected pipeline as determined in the future.

Cost includes the contract for the flow monitoring and site selection for each study.