

# BUILD IN-FILL HOUSING IN ATHENS' HISTORIC DISTRICTS

AFFORDABLE IN-FILL  
HOUSING FOR  
ATHENS' HISTORIC DISTRICTS

POSTER

PROJECT:

TITLE:  
DATE:

1996

INFORMATION:

Call Julie Morgan  
Historic  
Preservation  
Planner  
ACC Planning Dept.  
For Full Details  
706-613-3515

SHEET NO.

1 of 1



THREE BEDROOM HOUSE  
ATHENS, GEORGIA  
HISTORIC DISTRICT

PROJECT:

FRONT

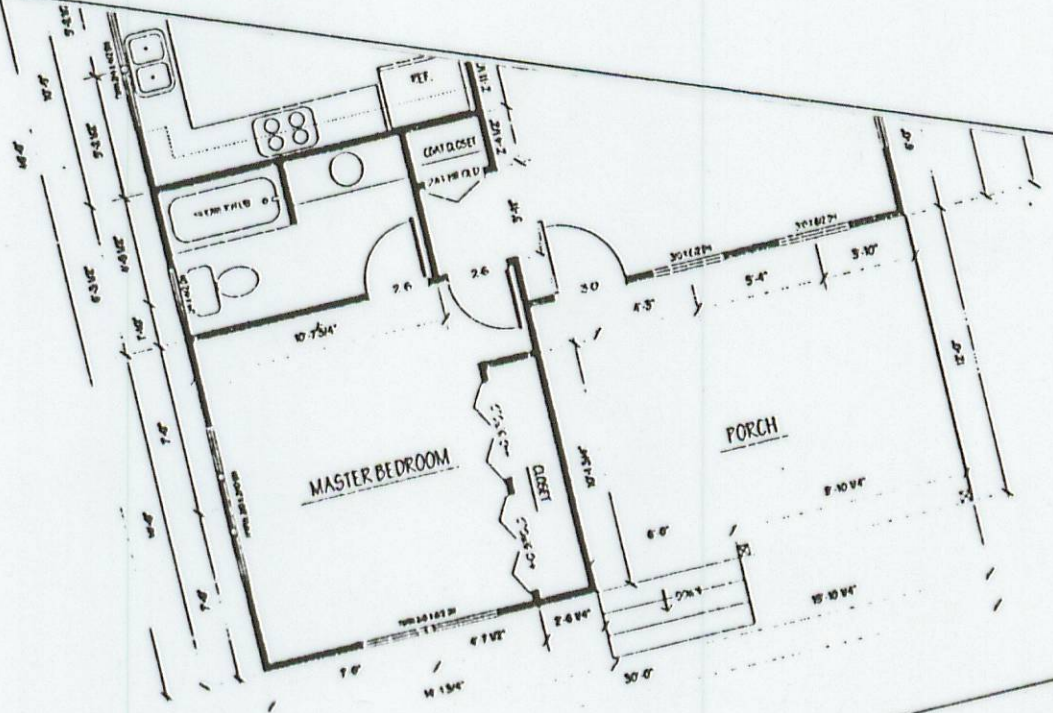
TITLE:

DATE:

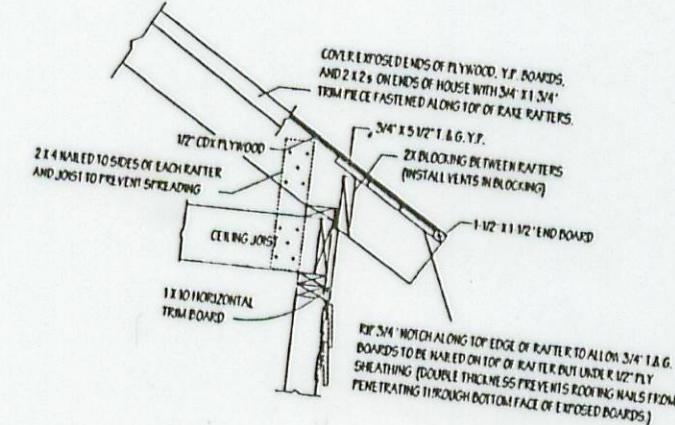
REVISIONS:

SHEET NO.

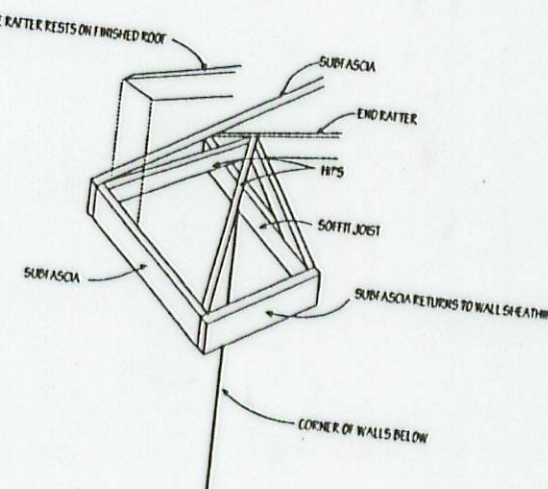
1



FLOORPLAN  
SCALE: 1/4" = 1' - 0"  
(1190 SQ. FT.)



EXPOSED RAFTER END



GREEK RETURN

DETAILS FOR TWO, THREE,  
AND FOUR BEDROOM HOUSES  
ATHENS, GEORGIA  
HISTORIC DISTRICT

PROJECT:

DETAILS

TITLE:

DATE:

REVISIONS:

SHEET NO.

2

NOTES FOR TWO, THREE,  
AND FOUR BEDROOM HOUSES

PROJECT:

NOTES

TITLE:

DATE:

REVISIONS:

SHEET NO.

3

NOTES FOR TWO, THREE, AND FOUR BEDROOM HOUSES

1. THE BATHROOMS SHOULD BE DESIGNED PROVIDING SPACE FROM THE DRAINAGE PIPES TO THE BATH TUB OR SHOWER. THE BATH TUB OR SHOWER SHOULD BE DESIGNED TO ALLOW FOR A MINIMUM OF 6" CLEARANCE TO THE BATH TUB OR SHOWER. THE BATH TUB OR SHOWER SHOULD BE DESIGNED TO ALLOW FOR A MINIMUM OF 6" CLEARANCE TO THE BATH TUB OR SHOWER. THE BATH TUB OR SHOWER SHOULD BE DESIGNED TO ALLOW FOR A MINIMUM OF 6" CLEARANCE TO THE BATH TUB OR SHOWER.

2. A STANDARD 30" HIGH DOOR FOR THE BATH TUB OR SHOWER SHOULD BE DESIGNED TO ALLOW FOR A MINIMUM OF 6" CLEARANCE TO THE BATH TUB OR SHOWER. THE BATH TUB OR SHOWER SHOULD BE DESIGNED TO ALLOW FOR A MINIMUM OF 6" CLEARANCE TO THE BATH TUB OR SHOWER. THE BATH TUB OR SHOWER SHOULD BE DESIGNED TO ALLOW FOR A MINIMUM OF 6" CLEARANCE TO THE BATH TUB OR SHOWER.

3. A STANDARD 30" HIGH DOOR FOR THE BATH TUB OR SHOWER SHOULD BE DESIGNED TO ALLOW FOR A MINIMUM OF 6" CLEARANCE TO THE BATH TUB OR SHOWER. THE BATH TUB OR SHOWER SHOULD BE DESIGNED TO ALLOW FOR A MINIMUM OF 6" CLEARANCE TO THE BATH TUB OR SHOWER. THE BATH TUB OR SHOWER SHOULD BE DESIGNED TO ALLOW FOR A MINIMUM OF 6" CLEARANCE TO THE BATH TUB OR SHOWER.

COST

ESTIMATING THE COST OF BUILDING ANY HOUSE IS DIFFICULT, AND EVEN MORE SO IF THE QUALITY OF THE WORKMANSHIP AND THE CHOICE OF MATERIALS IS NOT KNOWN. THE QUALITY OF THE WORKMANSHIP AND THE CHOICE OF MATERIALS IS NOT KNOWN. THE QUALITY OF THE WORKMANSHIP AND THE CHOICE OF MATERIALS IS NOT KNOWN. THE QUALITY OF THE WORKMANSHIP AND THE CHOICE OF MATERIALS IS NOT KNOWN.

SETS OF ARCHITECTURAL PLANS  
FOR 1, 2, 3 & 4 BEDROOM HOMES  
AVAILABLE FROM  
ATHENS-CLARKE COUNTY PLANNING DEPT.

This publication has been financed in part with federal funds from the National Park Service, U.S. Dept. of the Interior, through the Historic Preservation Division of the Georgia Dept. of Natural Resources. However, the contents and opinions do not necessarily reflect the views or policies of the Dept. of the Interior or the Georgia Dept. of Natural Resources, nor does the mention of trade names, commercial products or consultants constitute endorsement or recommendation by these agencies.

This program received Federal financial assistance for identification and protection of historic properties. Under Title VI of the Civil Rights Act of 1964, Section 604 of the Rehabilitation Act of 1973, and the Age Discrimination Act of 1975, as amended, the U.S. Dept. of the Interior prohibits discrimination on the basis of race, color, national origin, age, gender, or disability in its federally-assisted programs. If you believe that you have been discriminated against in any program, activity, or facility as described above, or if you desire further information, please write to:

Office of Equal Opportunity  
National Park Service  
Post Office Box 57127  
Washington, D.C. 20013-7127



## **Build In-Fill Housing in Athens-Clarke County's Historic Districts**

Architectural drawings for one bedroom, two bedroom, three bedroom and four bedroom/duplex in-fill houses are available at the Athens-Clarke County Planning Department and on-line. These drawings were completed as part of a CLG (Certified Local Government) grant received from the Historic Preservation Division of the Department of Natural Resources by the Unified Government of Athens-Clarke County. The designs were prepared by local designer/builders: Van Strickland Residential Design Services and D.O.C. Unlimited (Carl Martin and Dennis Harper) in conjunction with a committee composed of representatives of the Historic Preservation Commission, Human and Economic Development, Planning Department and the Athens Housing Authority. The premise of this project is that three goals (in-fill development, affordable housing and historic preservation) can be combined to the benefit of both individual neighborhoods and the community.

Please contact the Historic Preservation Planner at the Athens-Clarke County Planning Department (706 613-3515 for more information on this project.

*This publication has been financed in part with federal funds from the National Park Service U.S. Department of the Interior, through the Historic Preservation Division of the Georgia Department of Natural Resources. However, the contents and opinions do not necessarily reflect the views or policies of the Department of the Interior or the Georgia Department of Natural Resources, nor does the mention of trade names, commercial products or consultants constitute endorsement or recommendation by these agencies.*

*This program received Federal financial assistance for identification and protection of historic properties. Under Title VI of the Civil Rights Act of 1964, Section 504 of the Rehabilitation Act of 1973, and the Age Discrimination Act of 1975, as amended, the U. S. Department of the Interior prohibits discrimination on the basis of race, color, national origin, age, gender, or disability in its federally-assisted programs. If you believe that you have been discriminated against in any program, activity, or facility as described above, or if you desire further information, please write to:*

*Office of Equal Opportunity  
National Park Service  
Post Office Box 37127  
Washington, D.C. 20013-7127*





THREE BEDROOM HOUSE  
HISTORIC DISTRICT      ATHENS, GEORGIA

PROJECT:

FRONT

TITLE:

DATE:

FEB. 20, 1996

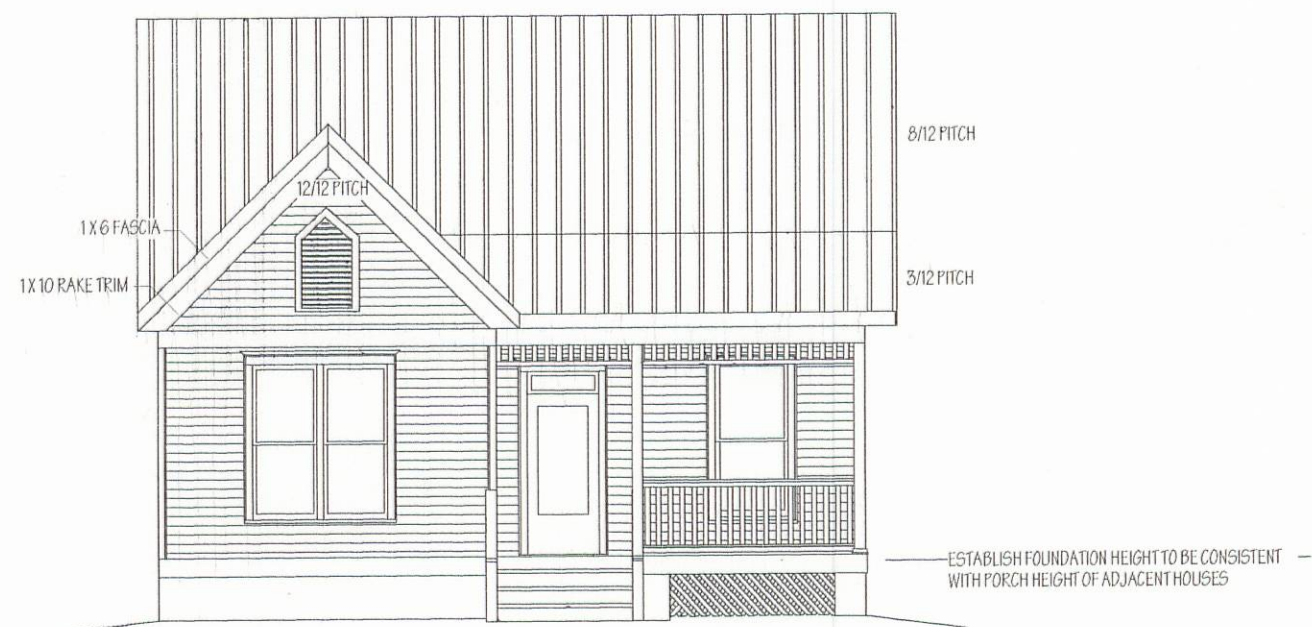
REVISIONS:

SHEET NO.









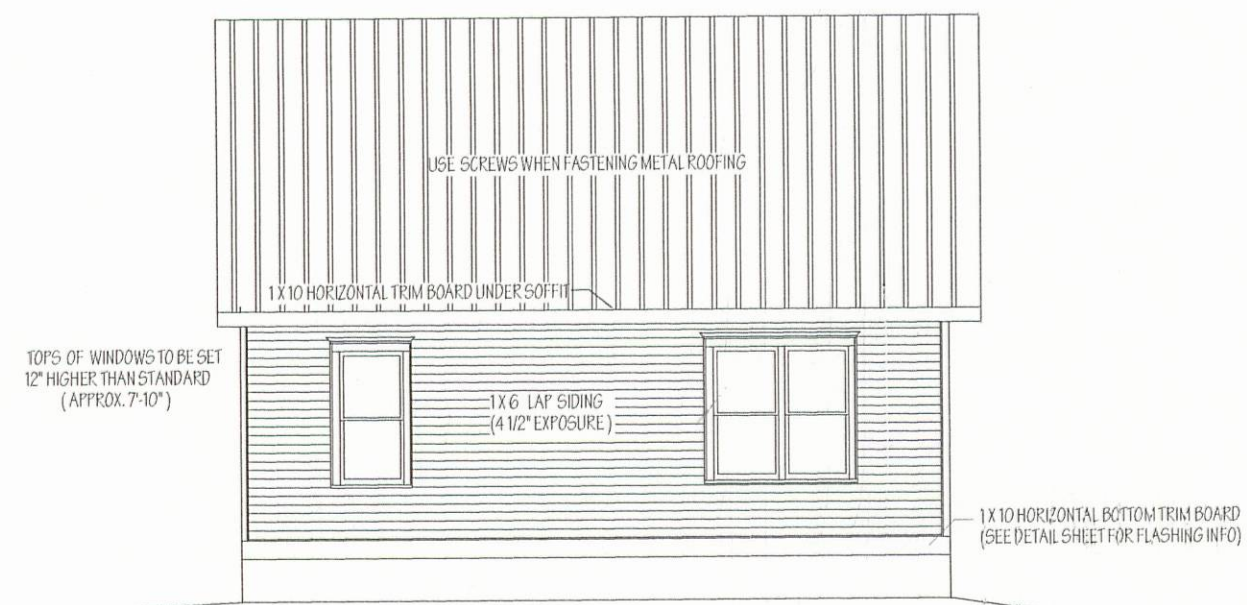
FRONT



RIGHT SIDE



LEFT SIDE



REAR

## ELEVATIONS

SCALE: 1/8" = 1' - 0"

## THREE BEDROOM HOUSE

ATHENS, GEORGIA

HISTORIC DISTRICT

PROJECT:

## ELEVATIONS

TITLE:

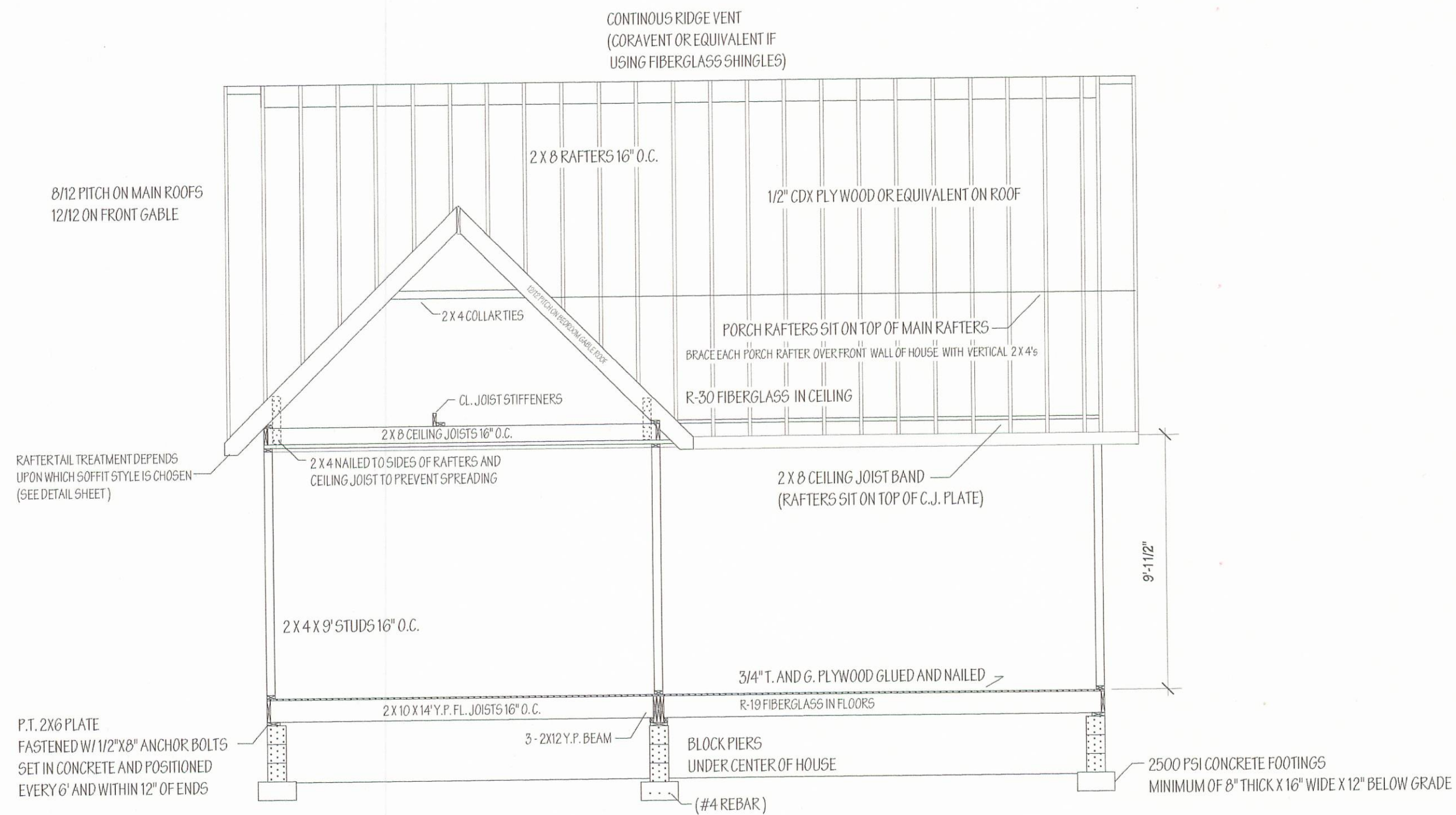
DATE:

REVISIONS:  
FEB. 20, 1996

SHEET NO.

3





## BUILDING SECTION (FRONT VIEW)

SCALE: 1/4" = 1' - 0"

### THREE BEDROOM HOUSE

ATHENS, GEORGIA

HISTORIC DISTRICT

PROJECT:

SECTION

TITLE:

DATE:

FEB. 20, 1996

REVISIONS:

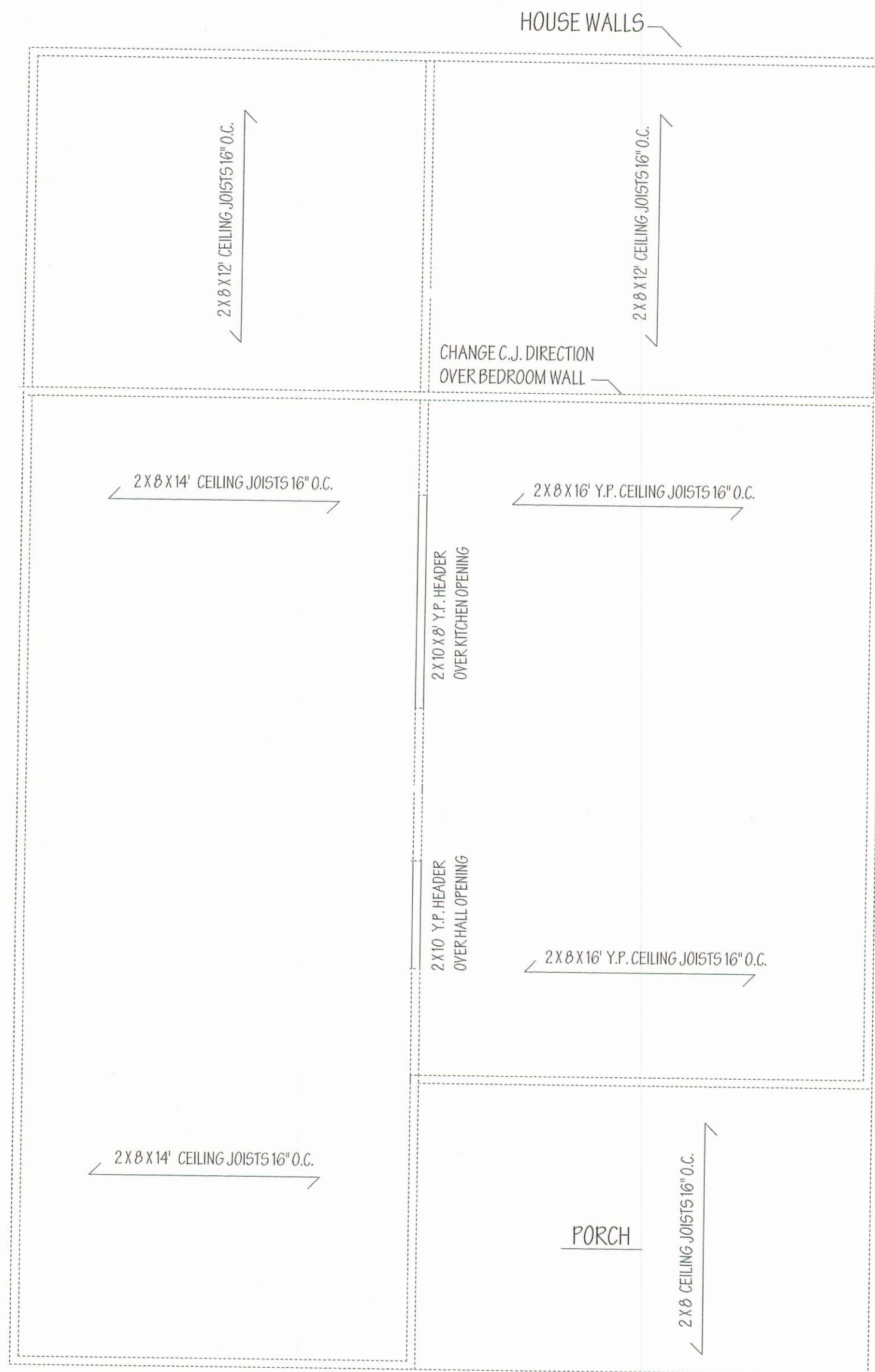
SHEET NO.

4



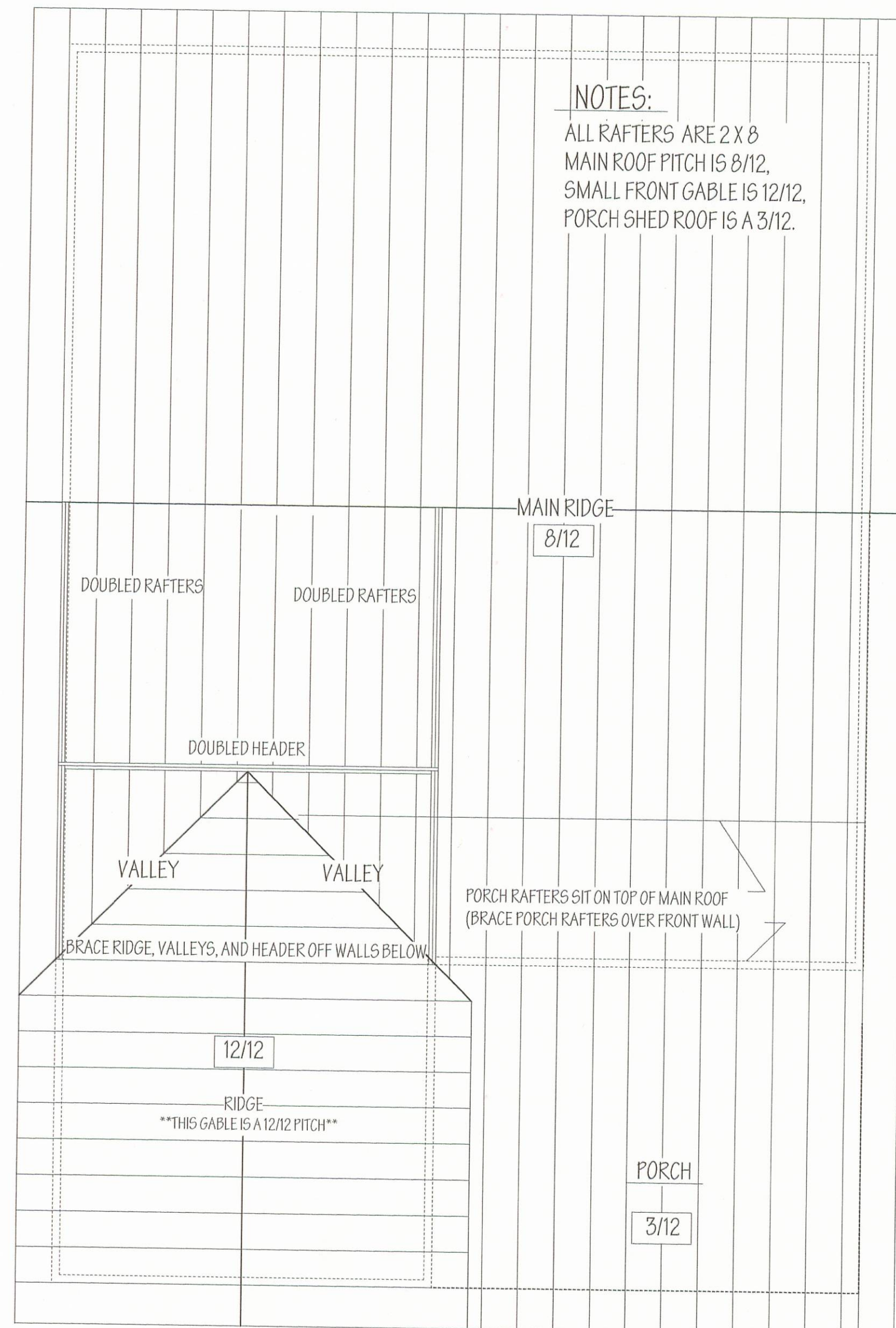






CEILING JOIST PLAN

SCALE: 1/4" = 1' - 0"



ROOF PLAN

SCALE: 1/4" = 1' - 0"

THREE BEDROOM HOUSE

ATHENS, GEORGIA

HISTORIC DISTRICT

PROJECT:

ROOF PLAN

TITLE:

DATE:

FEB. 20, 1996

REVISIONS:

SHEET NO.

6