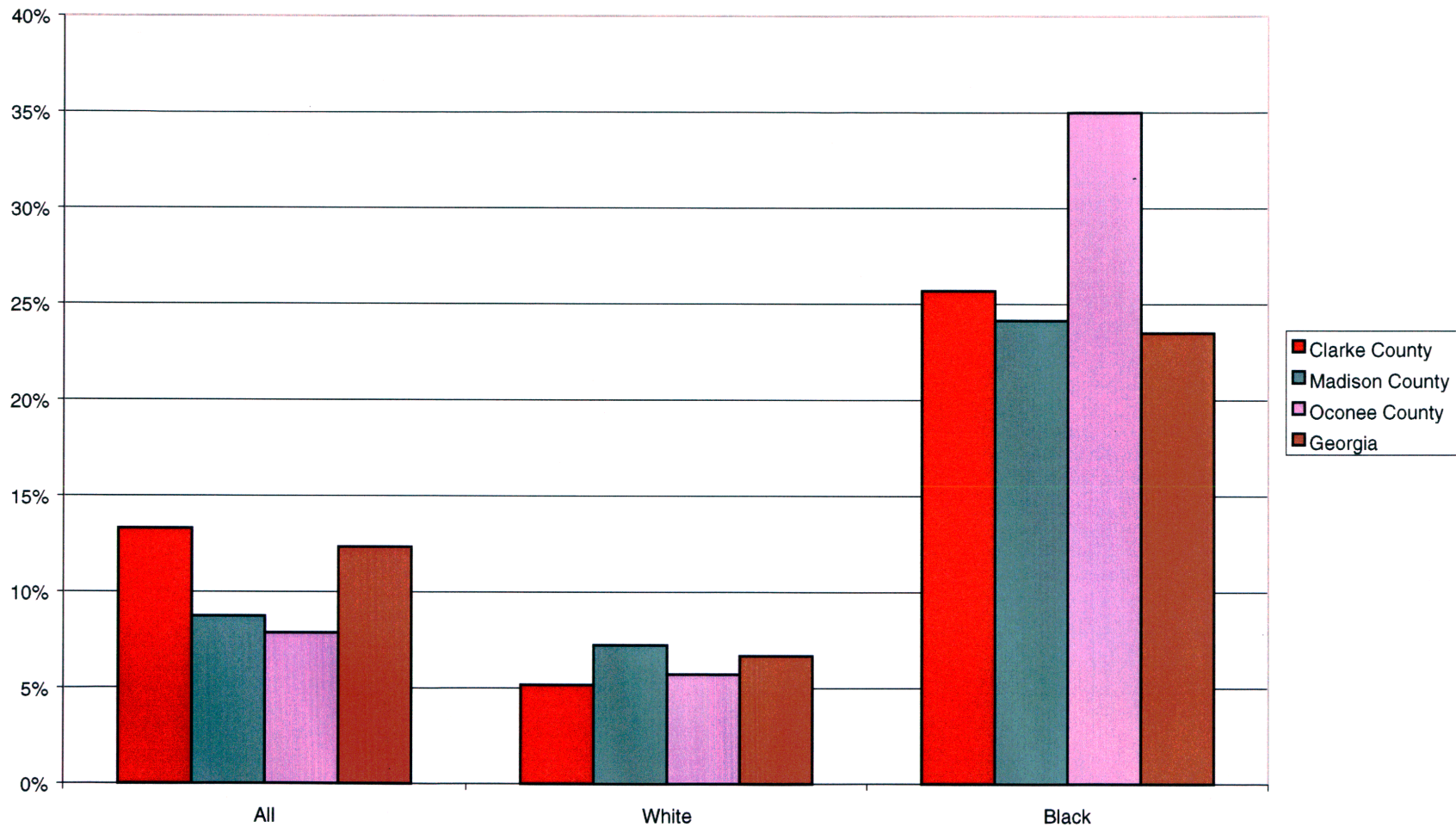
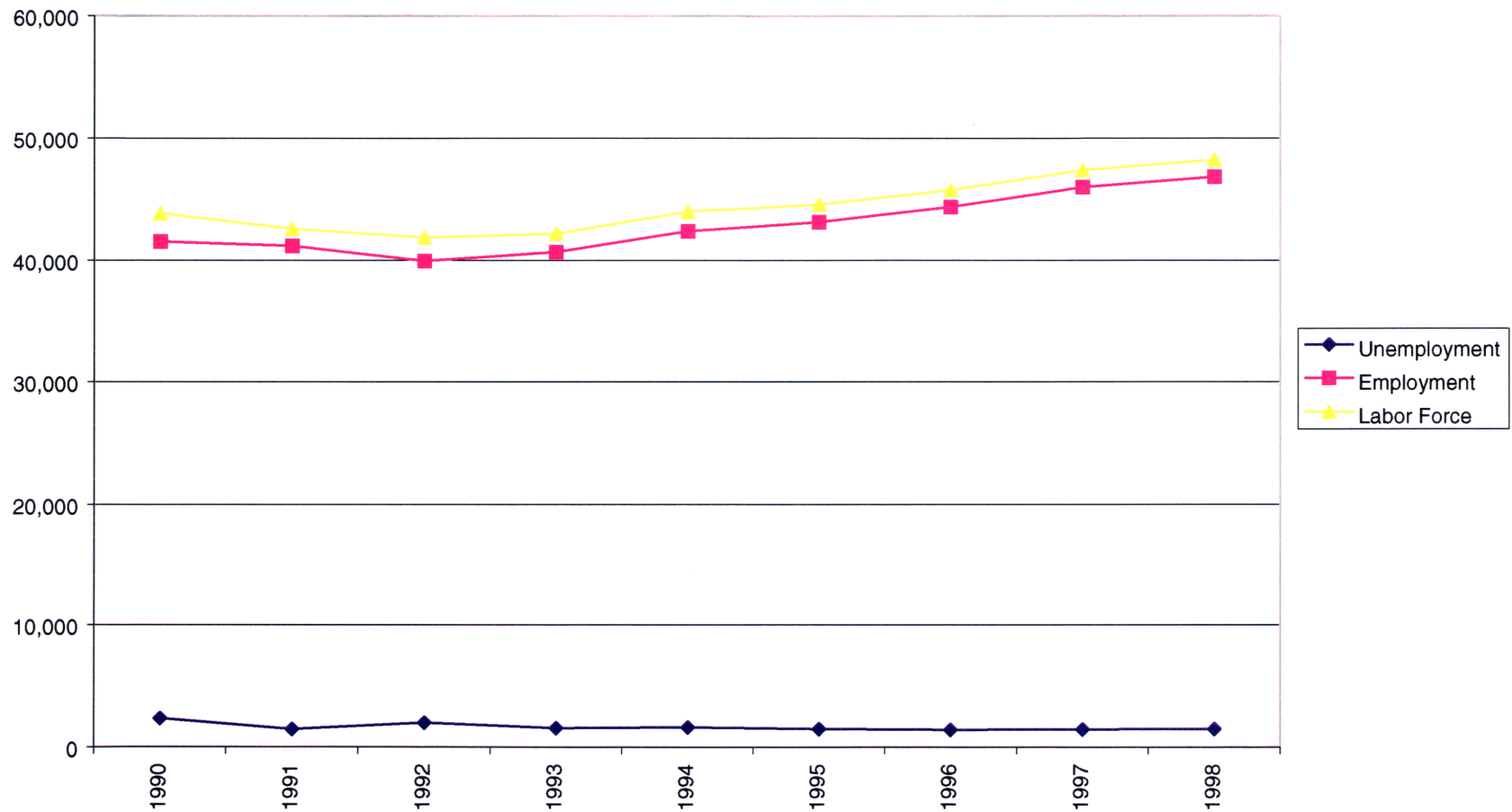


Chart 22
Live Births to Unwed Teenage Mothers as a Percent of Total Live Births, by Race,
Clarke County and Other Areas, 1995



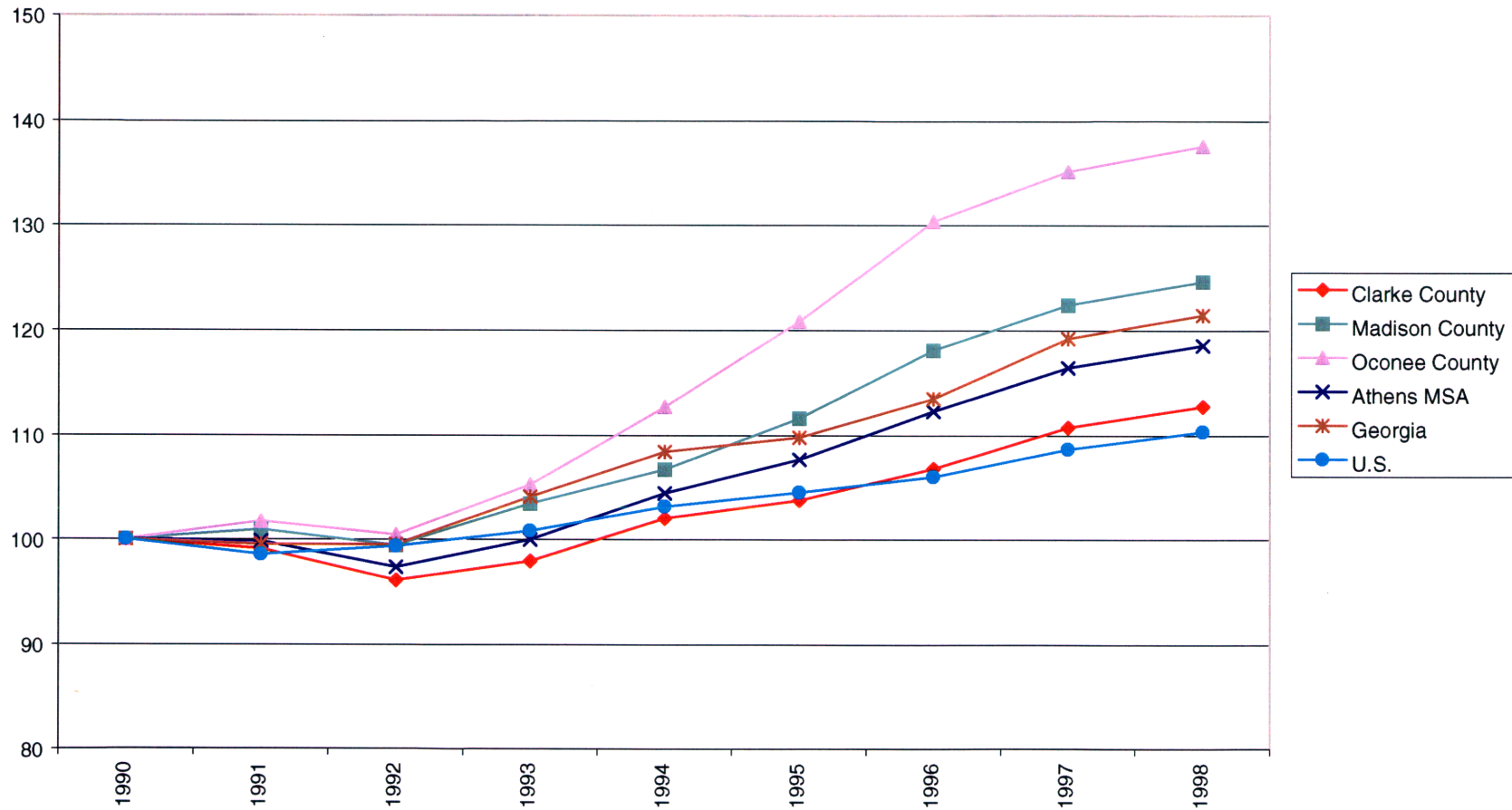
Source: U.S. Census Bureau (from the Georgia County Guide, 1997)

Chart 23
Clarke County
Employment, Unemployment and Labor Force
1990-1998 (May)



Source: U.S. Bureau of Labor Statistics

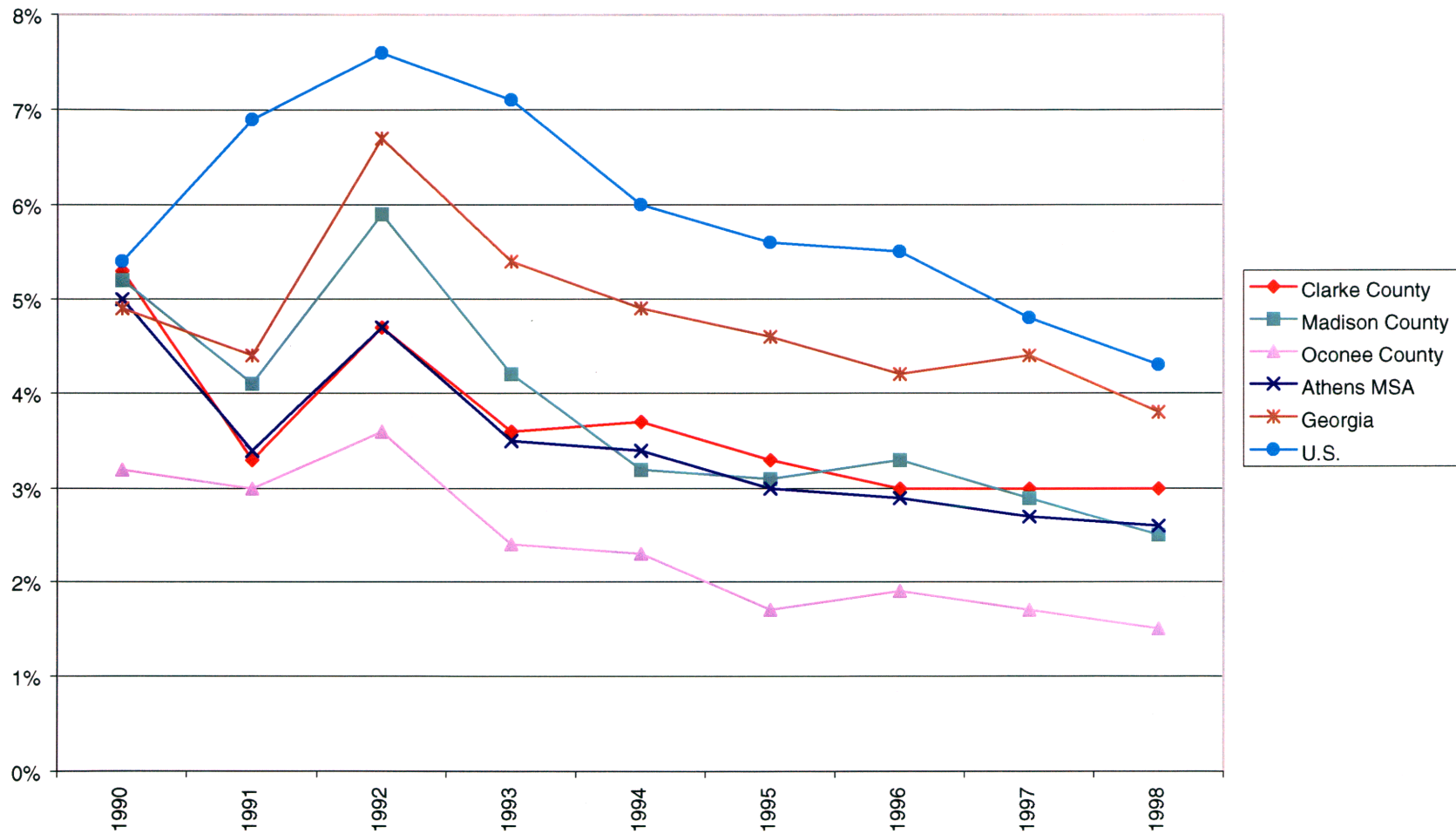
Chart 24
Index of Employment (1990=100)
Clarke County and Other Areas, 1990-1998 (May)



Source: U.S. Bureau of Labor Statistics

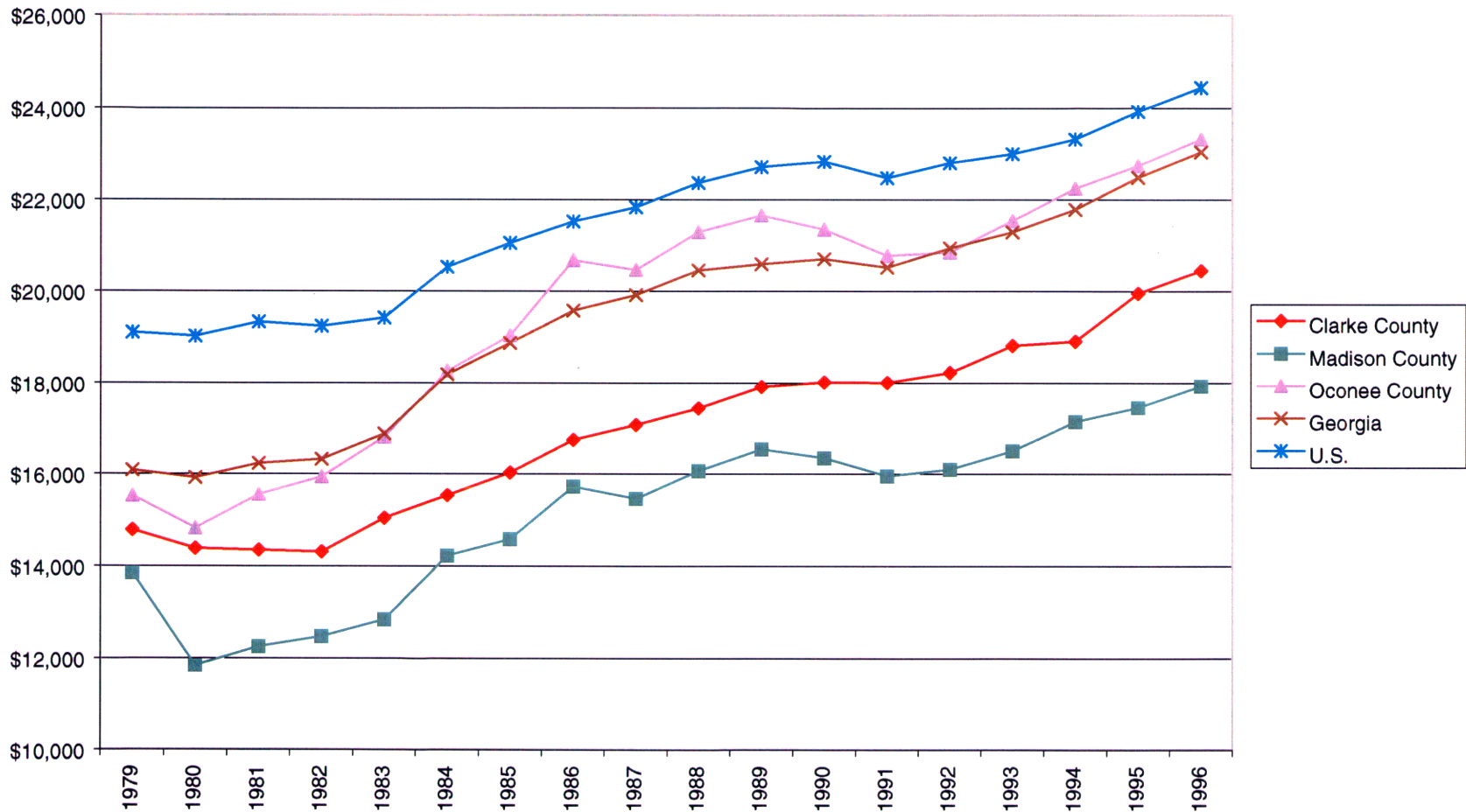
Note: This chart illustrates the percentage change in employment for each of the geographic areas from the base year of 1990.

Chart 25
Unemployment Rate, Clarke County and Other Areas, 1990-1998 (May)



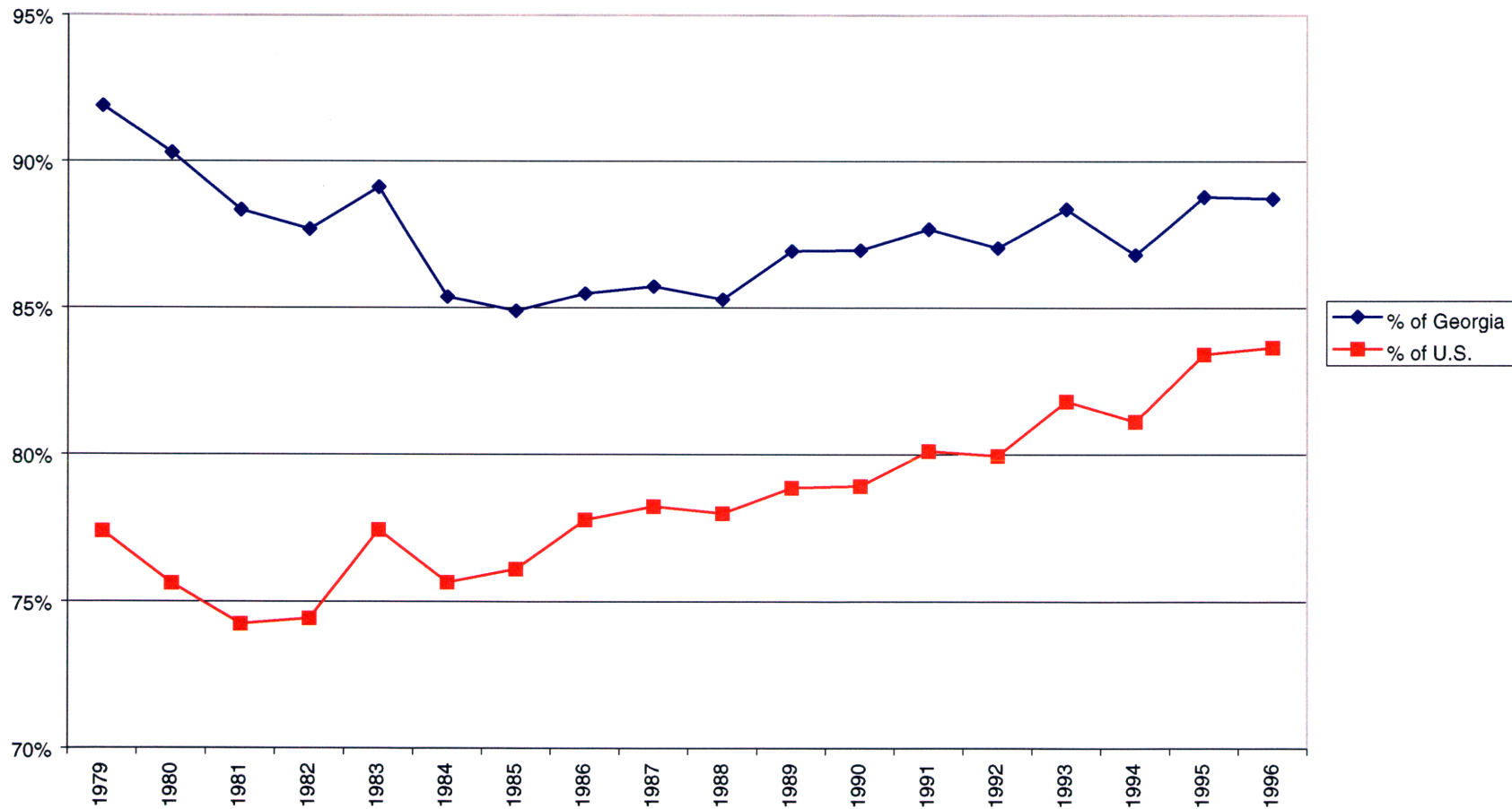
Source: U.S. Bureau of Labor Statistics

Chart 16
Real Per Capita Personal Income, Clarke County and Other Areas, 1979-1996



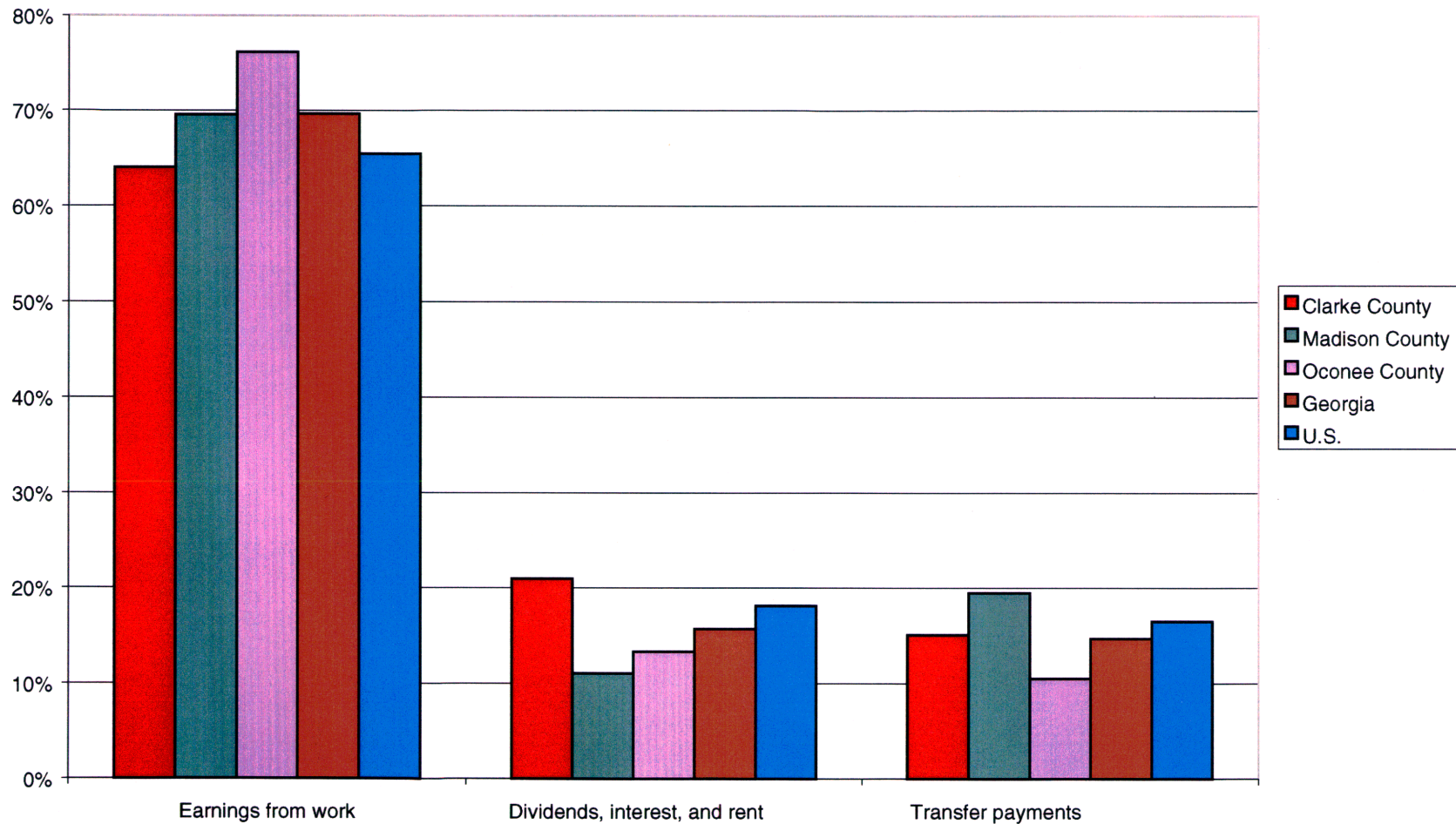
Source: U.S. Bureau of Economic Analysis

Chart 17
Clarke County Per Capita Personal Income as a
Percent of Georgia and the U.S., 1979 - 1996



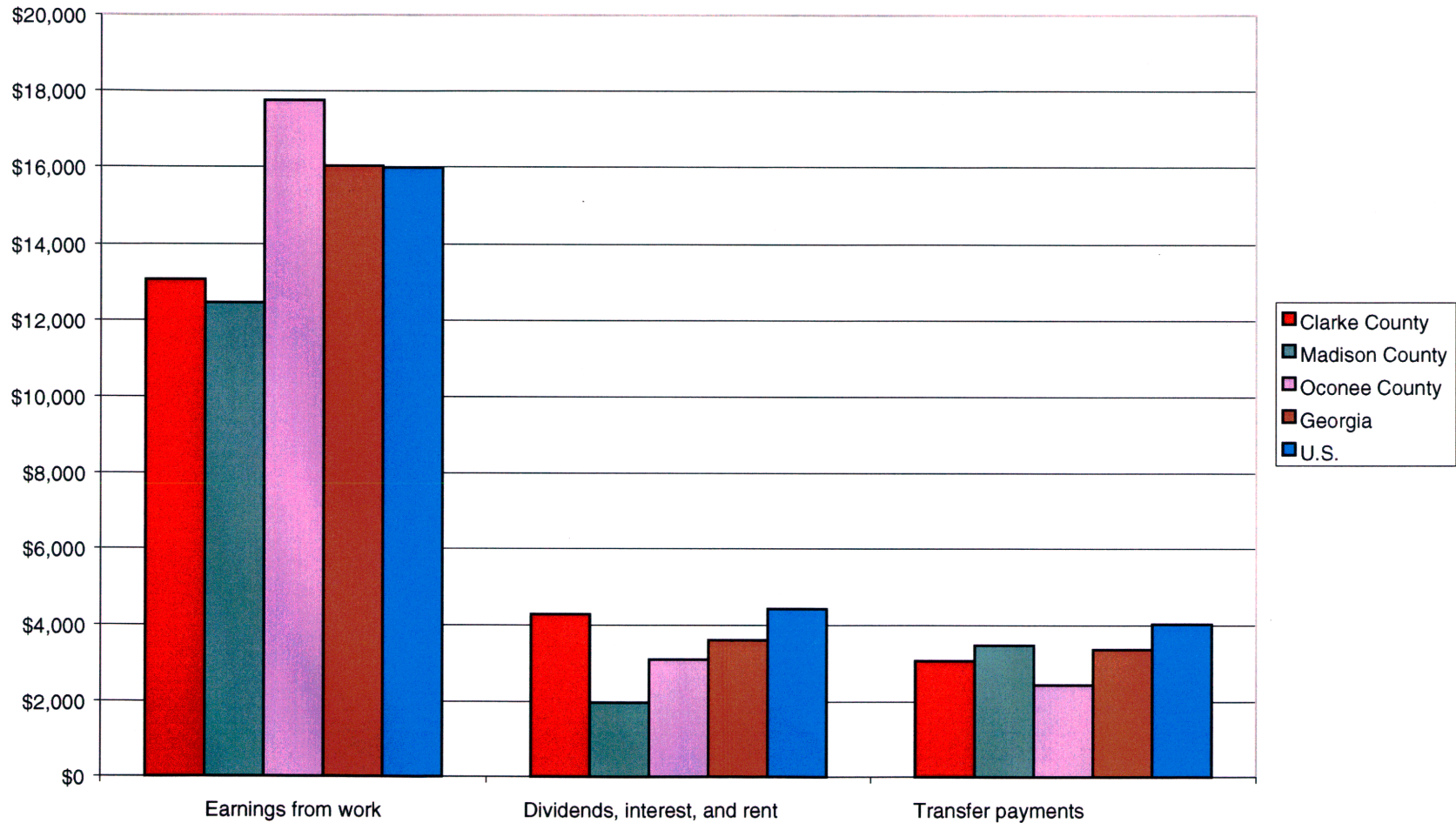
Source: U.S. Bureau of Economic Analysis

Chart 26
Distribution of Personal Income by Source, Clarke County and Other Areas, 1996



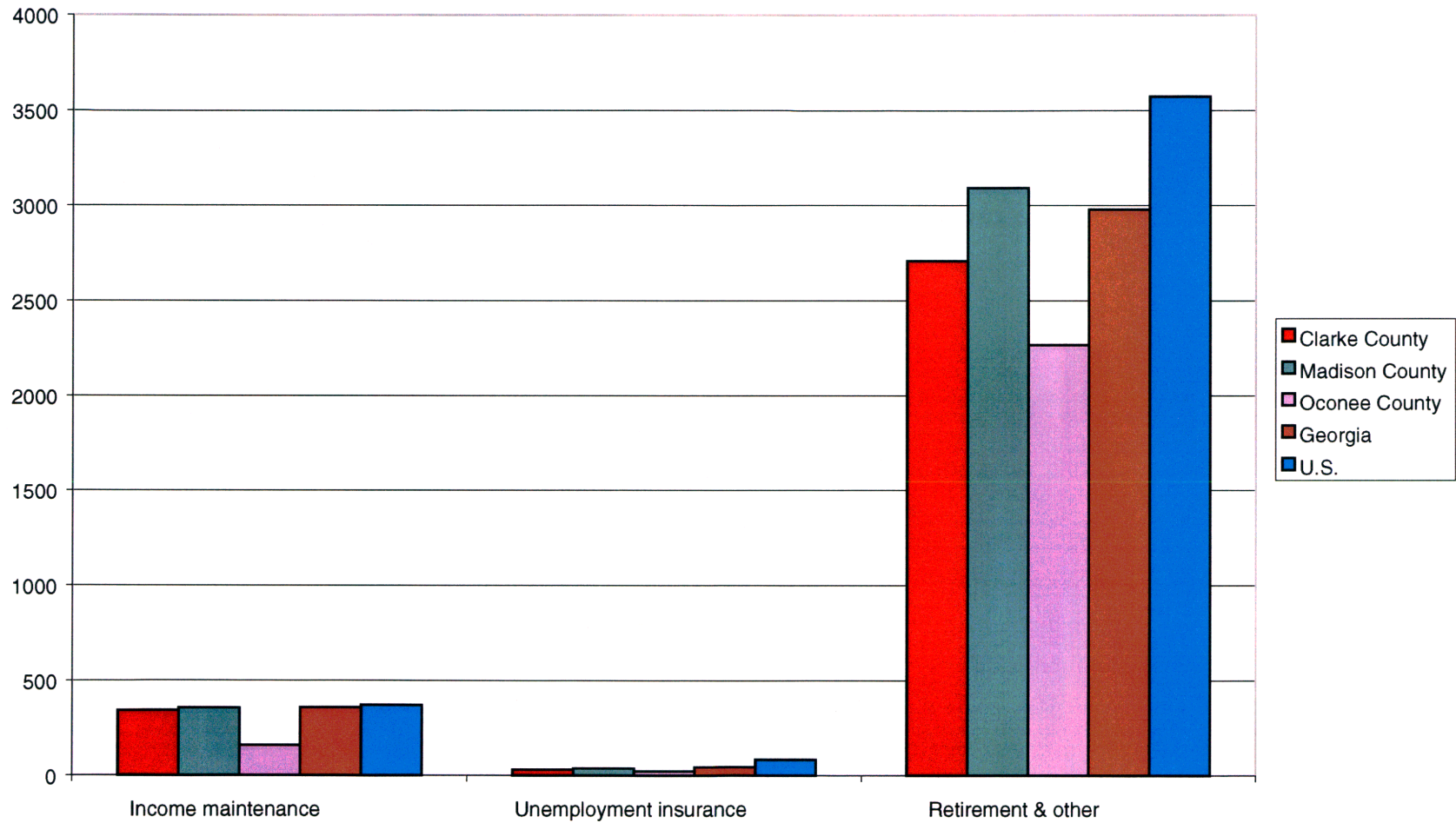
Source: U.S. Bureau of Economic Analysis

Chart 27
Per Capita Income by Source, Clarke County and Other Areas, 1996



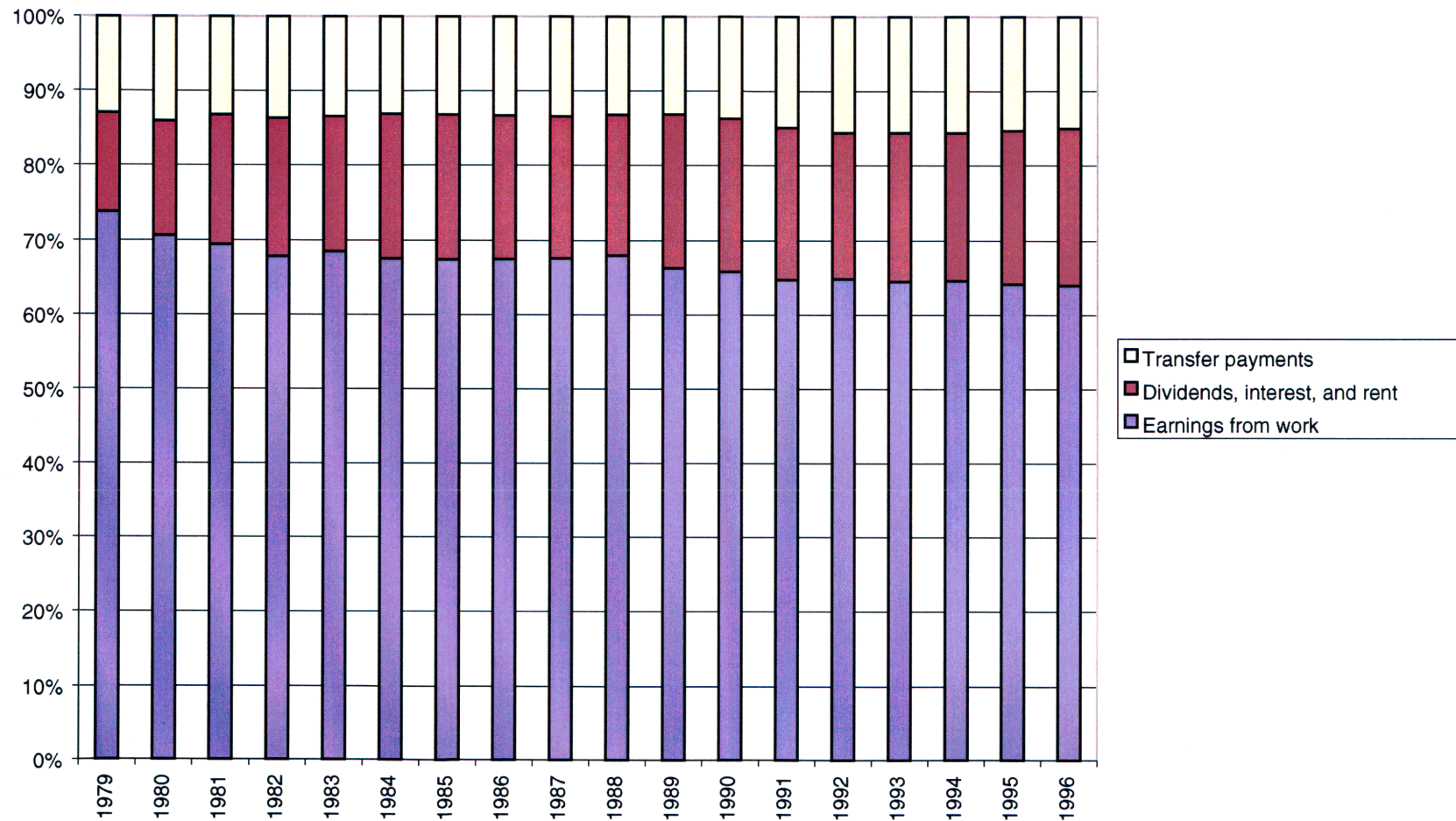
Source: U.S. Bureau of Economic Analysis

Chart 28
Per Capita Transfer Payments by Source, Clarke County and Other Areas, 1996



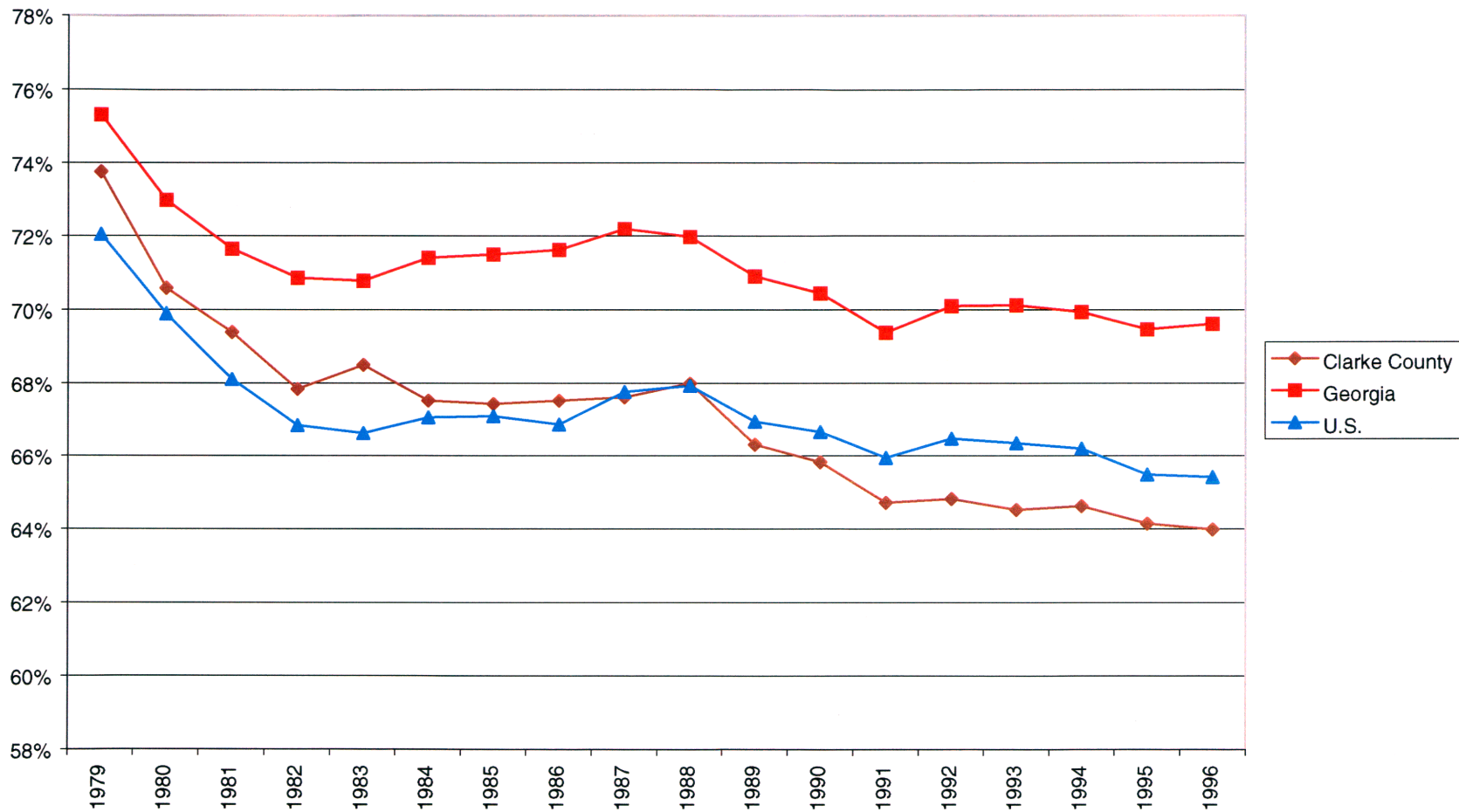
Source: U.S. Bureau of Economic Analysis

Chart 29
Percent Distribution of Personal Income by Source
Clarke County 1979-1996



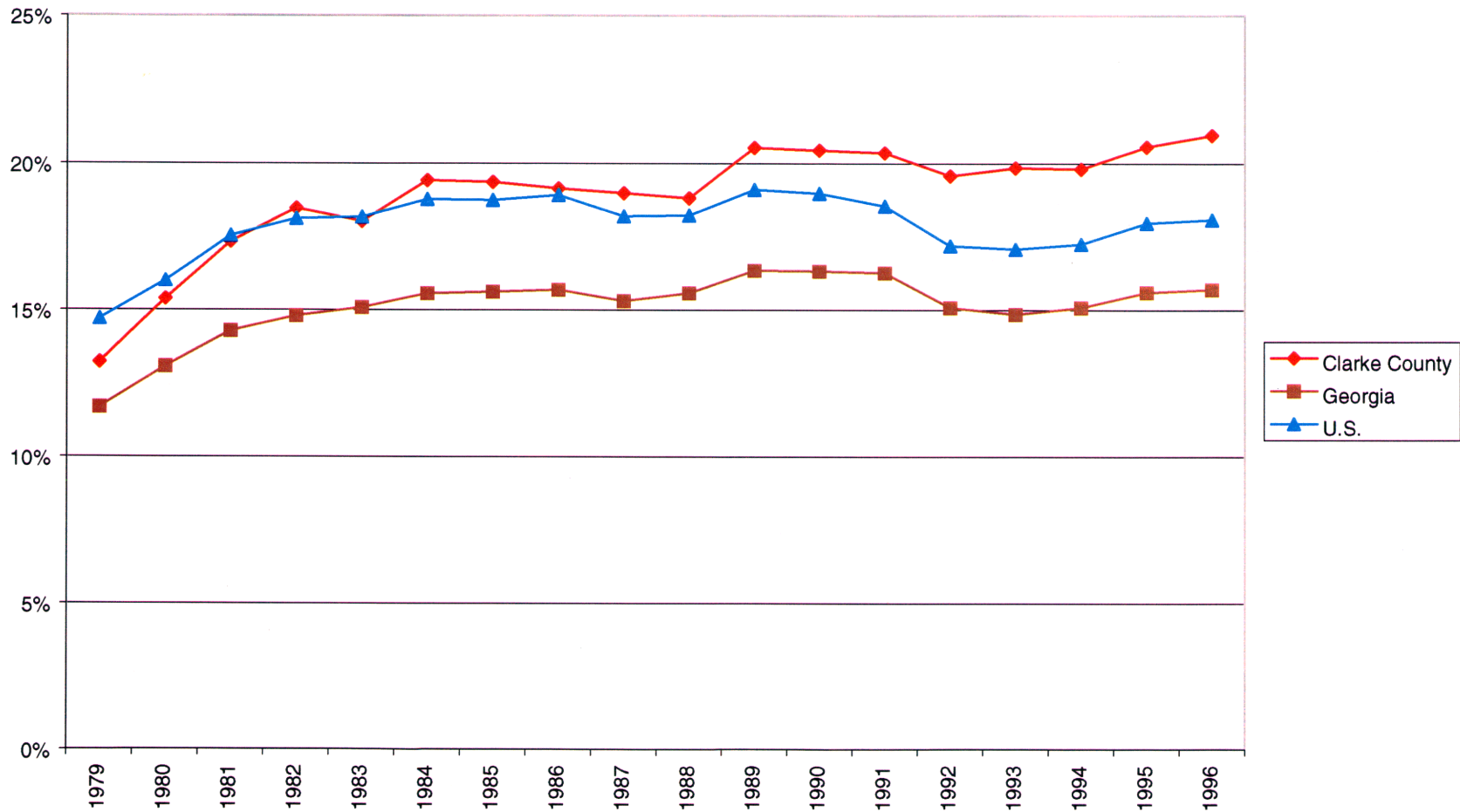
Source: U.S. Bureau of Economic Analysis

Chart 30
Earnings from Work as a Percent of Personal Income,
Clarke County, Georgia, and U.S., 1979-1996



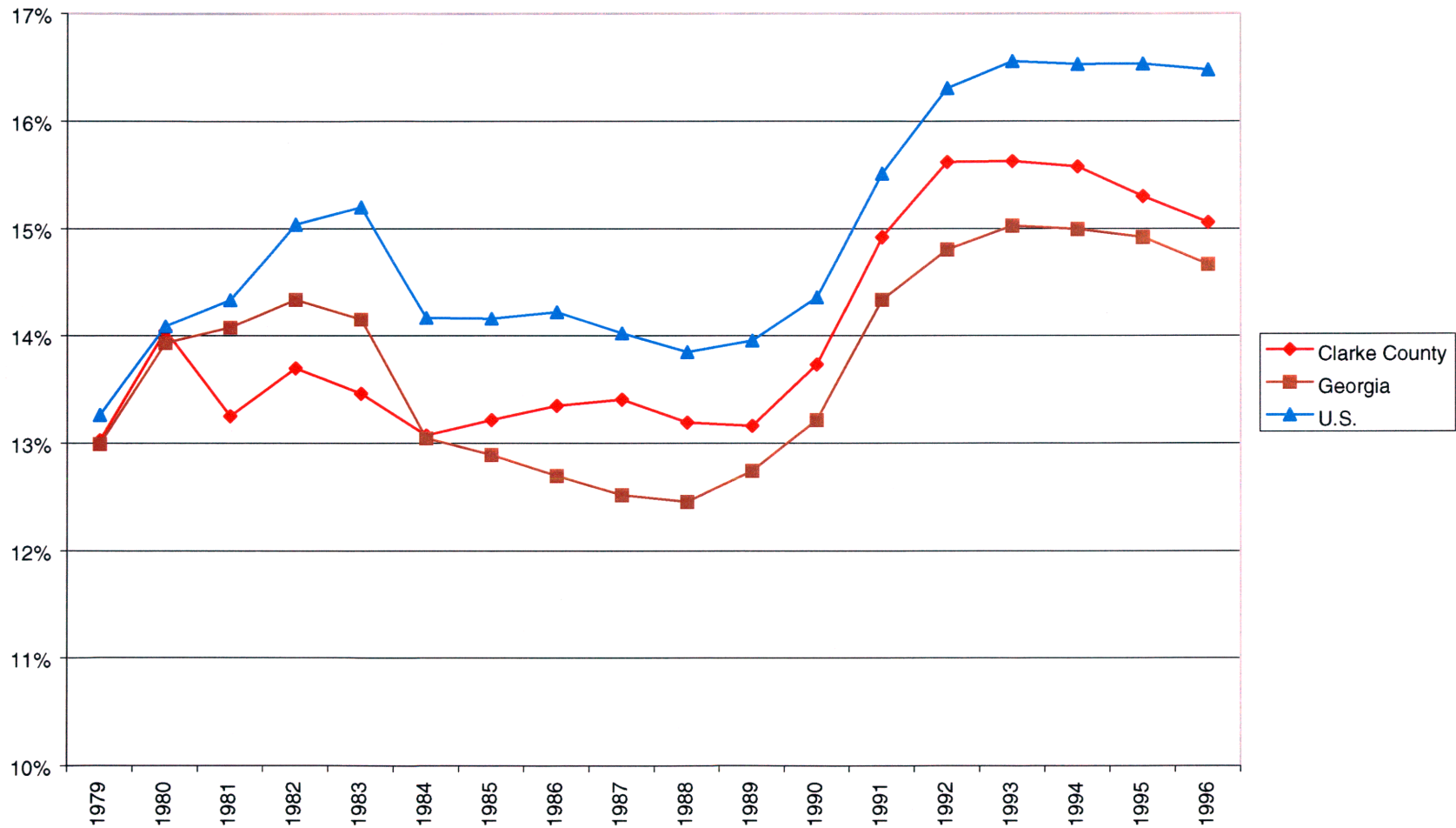
Source: U.S. Bureau of Economic Analysis

Chart 31
Investment Income as a Percent of Personal Income
Clarke County, Georgia, and U.S., 1979-1996



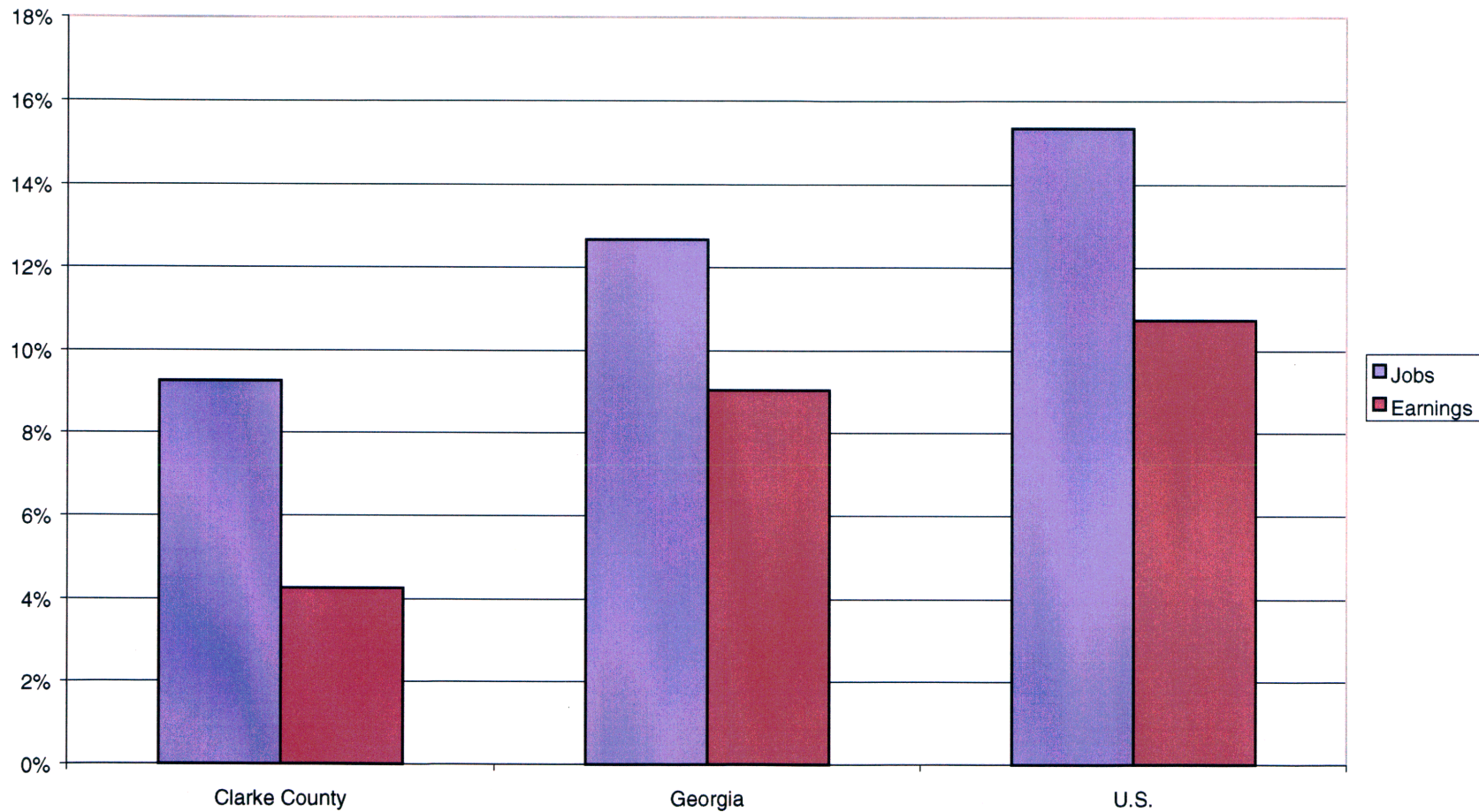
Source: U.S. Bureau of Economic Analysis

Chart 32
Transfer Payments as a Percent of Personal Income
Clarke County, Georgia, and U.S., 1979-1996



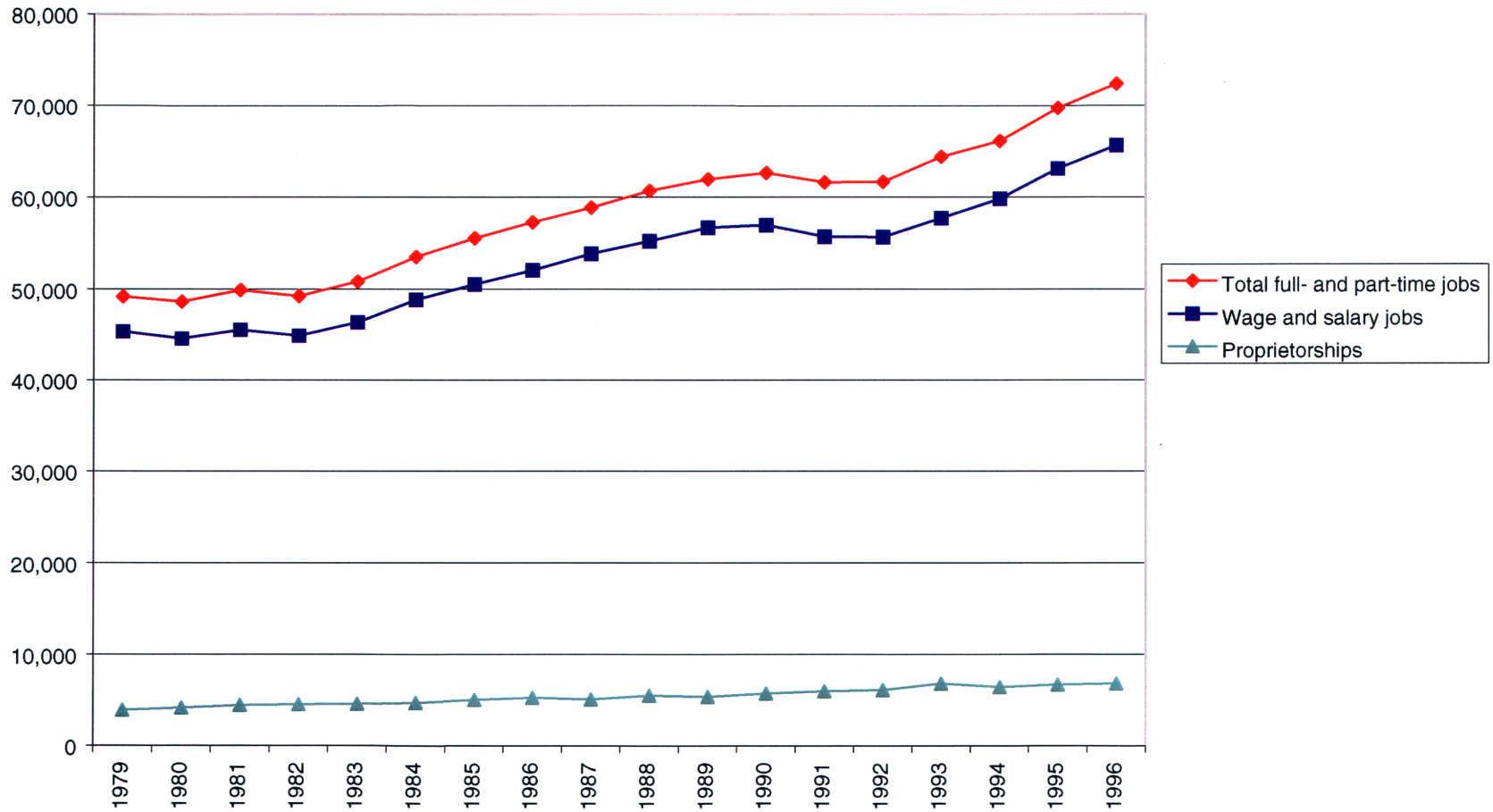
Source: U.S. Bureau of Economic Analysis

Chart 33
Nonfarm Proprietorship Jobs and Earnings as a
Percent of All Nonfarm Jobs and Earnings
Clarke County, Georgia, and U.S.



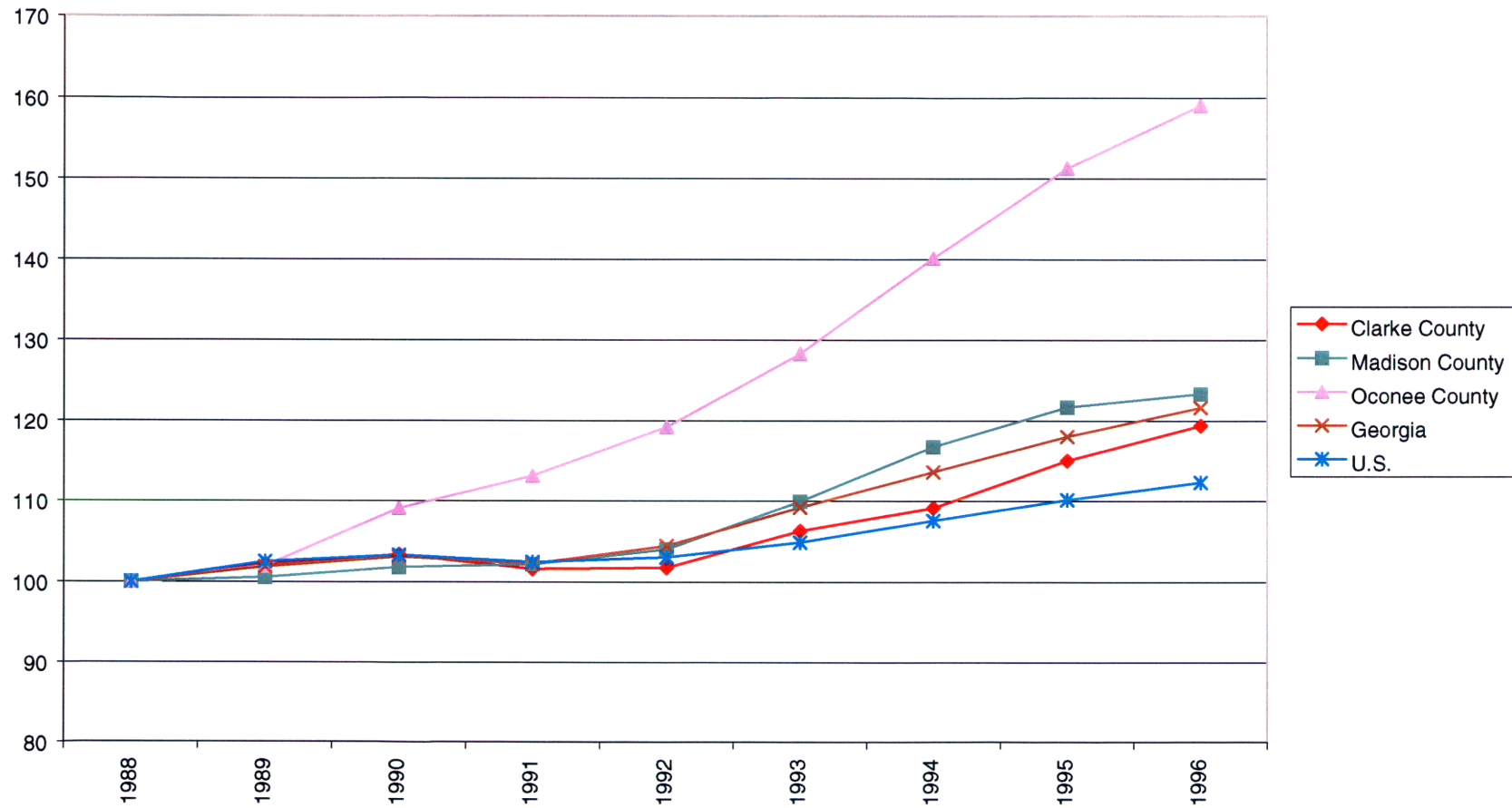
Source: U.S. Bureau of Economic Analysis

Chart 34
Jobs (Wage and Salary, Proprietorships), Clarke County, 1979-1996



Source: U.S. Bureau of Economic Analysis

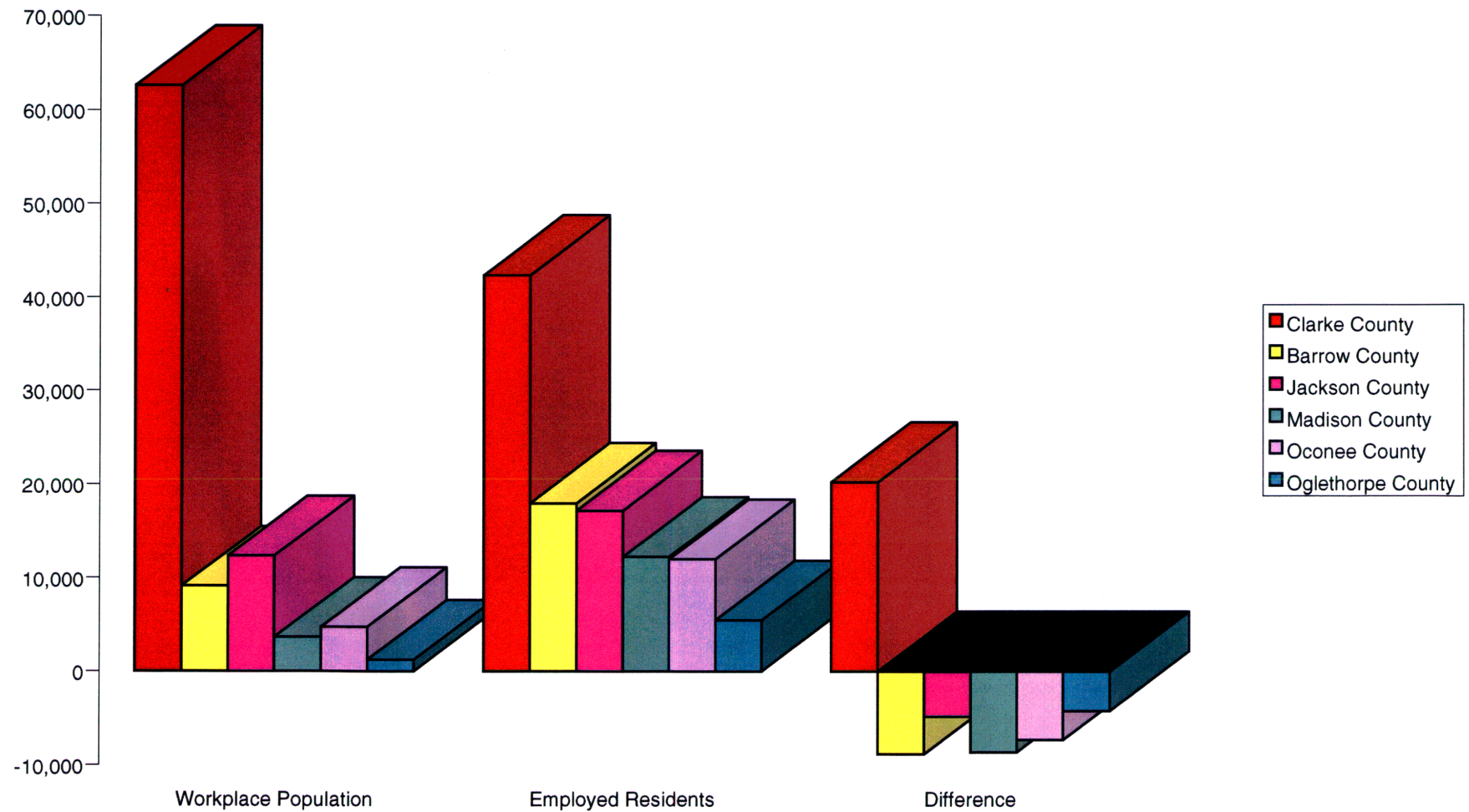
Chart 35
Index of Job Growth (1988=100)
Clarke County and Other Areas, 1988-1996



Source: U.S. Bureau of Economic Analysis

Note: This chart illustrates the percentage change in job growth for each of the geographic areas from the base year of 1990.

Chart 36
Workplace Population and Employed Residents, Clarke County and Other Areas, 1997



Source: Claritas, Inc.

Chart 37

Distribution of Jobs and Earnings, and Average Annual Earnings,
by Sector, Clarke County, 1996

	Jobs	Earnings	Average Annual Earnings
Farm employment	0.3%	0.7%	\$72,773
Nonfarm employment	99.7%	99.3%	\$24,825
Private employment	76.4%	68.8%	\$22,475
Construction	3.4%	3.4%	\$25,415
Manufacturing	15.0%	18.0%	\$29,865
Transportation and public utilities	2.7%	3.7%	\$34,627
Wholesale trade	4.5%	5.5%	\$30,335
Retail trade	20.8%	10.9%	\$13,066
Finance, insurance, and real estate	4.2%	3.5%	\$20,901
Services	25.1%	23.4%	\$23,289
Government and government enterprises	23.4%	30.5%	\$32,499
Federal, civilian	2.2%	4.4%	\$49,478
Military	1.0%	1.1%	\$29,352
State and local	20.2%	25.0%	\$30,807
State	15.5%	19.9%	\$32,126
Local	4.8%	5.1%	\$26,537

Source: U.S. Bureau of Economic Analysis

Chart 38
Actual Change in Jobs by Sector
Clarke County, 1988-96

	Actual	Percent Change
Total full- and part-time employment	11,723	19.3%
Wage and salary employment	10,421	18.9%
Proprietors' employment	1,302	23.9%
Farm proprietors' employment	-20	-22.0%
Nonfarm proprietors' employment	1,322	24.6%
Farm employment	-76	-29.1%
Nonfarm employment	11,799	19.5%
Private employment	10,557	23.6%
Construction	38	1.6%
Manufacturing	-456	-4.0%
Transportation and public utilities	533	38.4%
Wholesale trade	418	14.7%
Retail trade	4,142	38.0%
Finance, insurance, and real estate	380	14.4%
Services	5,256	40.7%
Government and government enterprises	1,242	7.9%
Federal, civilian	-343	-17.8%
Military	-138	-16.5%
State and local	1,723	13.3%
State	2,372	26.9%
Local	-649	-15.8%

Source: U.S. Bureau of Economic Analysis

Chart 39
Traded Components of the Clarke County Retail Trade Sector,
Selected Characteristics, 1996

	1996 Location Quotient	1996 Pull Factor	1996 Earnings (\$M)	1995 Employment
Retail Trade	1.19	1.92	\$196.6	12,602
Eating and Drinking Places	1.44	1.95	\$56.2	4,331
Auto Dealers and Service Stations	1.27	1.90	\$35.9	1,177
Miscellaneous Retail	1.11	NA	\$30.4	1,967
Food Stores	0.97	1.47	\$24.7	1,935
General Merchandise	1.10	2.14	\$19.7	1,526
Building Materials	1.39	NA	\$12.9	413
Furniture and Furnishings	1.02	1.49	\$10.2	417

Note 1: Location quotient based on earnings, pull factor based on sales

Note 2: Earnings include wage and salary job and proprietorship earnings;
employment includes only wage and salary jobs

Note 3: Employment figures are latest year available for retail subsectors.

Note 4: Pull factor for auto is for auto dealerships only.

Sources: U.S. Bureau of Economic Analysis; Georgia Outshopping,
University of Georgia Business Outreach Services;
County Business Patterns, U.S. Bureau of the Census

Chart 40

Average Annual Earnings by Sector, Clarke County, 1996

	Clarke County Annual Average Earnings	As a Percent of Georgia	As a Percent of U.S.
Total full- and part-time employment	\$24,947	86.0%	83.5%
Wage and salary employment	\$23,681	87.4%	83.1%
Proprietors' employment	\$13,031	59.0%	63.3%
Farm proprietors' employment	\$161,859	398.8%	1064.5%
Nonfarm proprietors' employment	\$11,451	55.4%	54.3%
Farm employment	\$72,773	216.7%	457.7%
Nonfarm employment	\$24,825	85.8%	82.4%
Private employment	\$22,475	77.6%	75.3%
Construction	\$25,415	88.6%	81.0%
Manufacturing	\$29,865	84.9%	70.0%
Transportation and public utilities	\$34,627	71.4%	80.8%
Wholesale trade	\$30,335	71.1%	74.8%
Retail trade	\$13,066	83.1%	80.9%
Finance, insurance, and real estate	\$20,901	66.3%	62.8%
Services	\$23,289	85.6%	84.3%
Government and government enterprises	\$32,499	113.0%	101.8%
Federal, civilian	\$49,478	118.0%	107.7%
Military	\$29,352	125.7%	134.9%
State and local	\$30,807	113.3%	99.8%
State	\$32,126	109.6%	101.6%
Local	\$26,537	101.0%	86.8%

Source: U.S. Bureau of Economic Analysis

Chart 41

Average Weekly Pay for Service Industry Wage and Salary Jobs,
Clarke County, Georgia and U.S., 1996

	Average Weekly Pay			Clarke as % of Georgia	Clarke as % of U.S.	Clarke Employment	Percent of Services Sector
	Clarke County	Georgia	U.S.				
Services	\$455	\$519	\$523	87.7%	87.0%	12,914	
Health services	\$690	\$619	\$592	111.5%	116.6%	5,241	40.6%
Business Services	\$262	\$477	\$488	54.9%	53.7%	2,361	18.3%
Social services	\$245	\$276	\$386	88.8%	63.5%	955	7.4%
Membership organizations	\$157	\$382	\$376	41.1%	41.8%	631	4.9%
Personal Services	\$207	\$294	\$291	70.4%	71.1%	586	4.5%
Hotels	\$197	\$314	\$321	62.7%	61.4%	572	4.4%
Engineering and management services	\$576	\$848	\$847	67.9%	68.0%	484	3.7%
Auto repair	\$334	\$420	\$418	79.5%	79.9%	435	3.4%
Amusement and recreation	\$271	\$408	\$372	66.4%	72.8%	379	2.9%
Legal services	\$724	\$784	\$934	92.3%	77.5%	372	2.9%
Educational services	\$491	\$524	\$518	93.7%	94.8%	359	2.8%
Motion pictures	\$159	\$306	\$567	52.0%	28.0%	256	2.0%
Private households	\$210	\$213	\$215	98.6%	97.7%	226	1.8%
Misc. repair services	\$322	\$492	\$516	65.4%	62.4%	51	0.4%
Non-health service jobs	\$294	\$482	\$493	61.1%	59.7%	7,673	59.4%

Sources: Georgia Department of Labor, U.S. Bureau of Labor Statistics