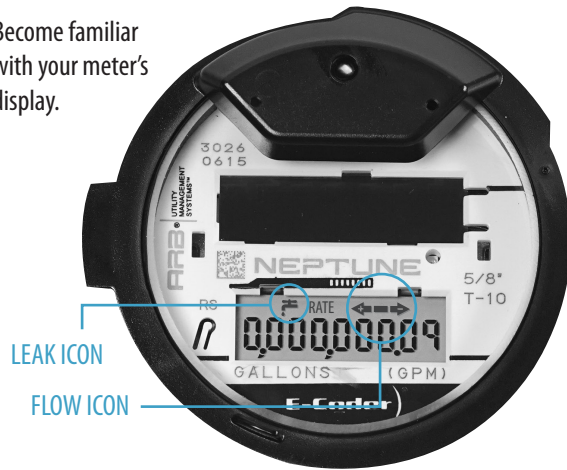


READING THE METER

Become familiar with your meter's display.



The **number LCD screen** shows your water use in billing units. Read the numbers from left to right.



OFF

The **leak icon** tells you if there is a possible leak.

ON

A **continuous leak**.

Water has been used in the last 24 hours during every 15-minute interval.

FLASHING

Intermittent leak.

Water has been used in the last 24 hours during at least half of every 15-minute interval.



OFF

The **flow icon** shows the direction of flow through the meter.

+ ON

Water in use, flowing properly.

+ FLASHING

Water in use, flowing slowly.

- FLASHING CONSTANTLY

Backwards flow occurring.

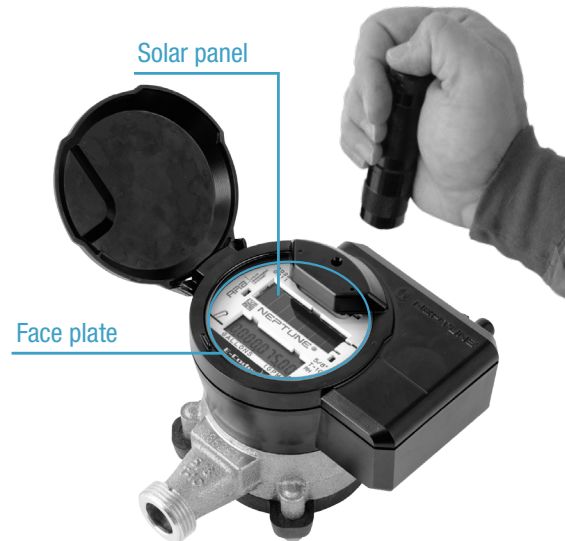
SOLAR PANEL

The light-activated solar panel supplies the power to light the meter displays. The meter should turn on when the lid is opened and the faceplate is exposed to sunlight.

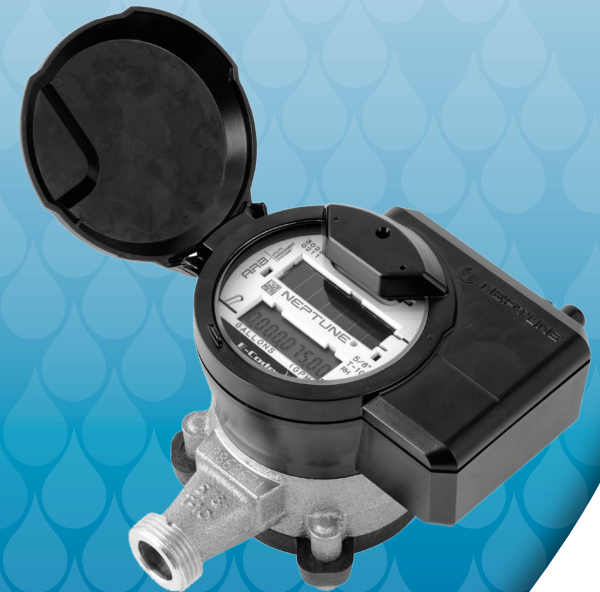
Can't read the LCD screen?

If the display is off, try covering the faceplate with your hand for about two seconds. In bright sunlight, it may be necessary to close the cover briefly. If the display does not turn on, try shining a flashlight on the solar panel.

If there is insufficient light, you'll see "Lo Light" on the faceplate.



Your New Water Meter



Instructions for

- reading
- detecting leaks



Public Utilities
water. wastewater. conservation.

direct contact info if
troubleshooting questions?

athensclarkecounty.com/AMI
706-613-3479



Public Utilities
water. wastewater. conservation.

Do I Have a Leak?

LOOK FOR THE LEAK ICON



OFF

No leak

ON

Continuous leak

FLASHING

Intermittent leak

IF THE LEAK ICON IS ON OR FLASHING...

- Check all faucets for possible leaks.
- Check all toilets and toilet valves.
- Check the ice maker and water dispenser.
- Check the yard and surrounding area for a wet spot or other indication of a leaking pipe.

Refer to the table at right for other possible causes.

COMMON CAUSES OF LEAKS

POSSIBLE CAUSE	INTERMITTENT	CONTINUOUS
• Outside faucet, garden or sprinkler system leaking	●	●
• Faucet leaking	●	●
• Toilet valve not sealed properly	●	●
• Washing machine leaking	●	●
• Dishwasher leaking	●	●
• Water-cooled air conditioner or heat pump leaking	●	●
• Toilet running		●
• Ice maker leaking		●
• Leak between the water meter and house		●
• Water heater leaking		●



AFTER REPAIR OF A CONTINUOUS LEAK,

complete the following steps:

- Use no water for at least 15 minutes.
- Check the leak icon.

If the leak icon changes from **ON** to **FLASHING**, a leak is no longer indicated.

AFTER REPAIR OF A INTERMITTENT LEAK,

complete the following steps:

- Check the leak icon after at least 24 hours.
- If the leak has been correctly repaired, the leak icon changes from **FLASHING** to **OFF**.

THE LEAK ICON MAY BE ON OR FLASHING IF YOU ARE...

- Using a soaker hose
- Watering your yard more than eight hours
- Using a continuous pet feeder on your water line
- Filling a swimming pool
- Using water continuously for 24 hours

Stop the activity and check to see if the leak icon goes off.



Each year in the U.S., minor leaks result in 1,000,000,000,000,000 gallons wasted.