



Athens-Clarke County, GA

Technical Appendices

2018



NRC
National Research Center Inc.

2955 Valmont Road Suite 300
Boulder, Colorado 80301
n-r-c.com • 303-444-7863



Leaders at the Core of Better Communities

777 North Capitol Street NE Suite 500
Washington, DC 20002
icma.org • 800-745-8780

Contents

Appendix A: Complete Survey Responses	1
Appendix B: Benchmark Comparisons	21
Appendix C: Detailed Survey Methods	31
Appendix D: Survey Materials	36



The National Citizen Survey™
© 2001-2018 National Research Center, Inc.

The NCS™ is presented by NRC in collaboration with ICMA.

NRC is a charter member of the AAPOR Transparency Initiative, providing clear disclosure of our sound and ethical survey research practices.

Appendix A: Complete Survey Responses

Responses excluding “don’t know”

The following pages contain a complete set of responses to each question on the survey, excluding the “don’t know” responses. The percent of respondents giving a particular response is shown followed by the number of respondents (denoted with “N=”).

Table 1: Question 1

Please rate each of the following aspects of quality of life in Athens-Clarke County:	Excellent		Good		Fair		Poor		Total	
Athens-Clarke County as a place to live	31%	N=77	57%	N=141	11%	N=27	1%	N=3	100%	N=249
Your neighborhood as a place to live	34%	N=84	43%	N=106	22%	N=55	1%	N=3	100%	N=248
Athens-Clarke County as a place to raise children	20%	N=39	42%	N=83	31%	N=61	8%	N=15	100%	N=198
Athens-Clarke County as a place to work	22%	N=50	52%	N=118	19%	N=42	7%	N=15	100%	N=226
Athens-Clarke County as a place to visit	42%	N=103	45%	N=112	13%	N=31	0%	N=0	100%	N=247
Athens-Clarke County as a place to retire	37%	N=68	36%	N=66	19%	N=35	9%	N=17	100%	N=186
The overall quality of life in Athens-Clarke County	22%	N=55	58%	N=144	18%	N=46	1%	N=2	100%	N=247

Table 2: Question 2

Please rate each of the following characteristics as they relate to Athens-Clarke County as a whole:	Excellent		Good		Fair		Poor		Total	
Overall feeling of safety in Athens-Clarke County	11%	N=27	57%	N=141	28%	N=70	4%	N=10	100%	N=248
Overall ease of getting to the places you usually have to visit	25%	N=61	56%	N=140	15%	N=37	4%	N=10	100%	N=248
Quality of overall natural environment in Athens-Clarke County	20%	N=49	63%	N=152	16%	N=39	1%	N=2	100%	N=242
Overall “built environment” of Athens-Clarke County (including overall design, buildings, parks and transportation systems)	9%	N=21	59%	N=144	27%	N=66	5%	N=11	100%	N=243
Health and wellness opportunities in Athens-Clarke County	19%	N=43	56%	N=129	20%	N=45	5%	N=12	100%	N=229
Overall opportunities for education and enrichment	34%	N=78	39%	N=91	20%	N=47	6%	N=14	100%	N=230
Overall economic health of Athens-Clarke County	8%	N=18	35%	N=79	37%	N=85	20%	N=47	100%	N=229
Sense of community	13%	N=32	44%	N=108	34%	N=83	9%	N=22	100%	N=245
Overall image or reputation of Athens-Clarke County	15%	N=36	56%	N=136	26%	N=63	3%	N=8	100%	N=243

Table 3: Question 3

Please indicate how likely or unlikely you are to do each of the following:	Very likely		Somewhat likely		Somewhat unlikely		Very unlikely		Total	
Recommend living in Athens-Clarke County to someone who asks	37%	N=92	49%	N=120	12%	N=30	2%	N=5	100%	N=247
Remain in Athens-Clarke County for the next five years	46%	N=112	15%	N=36	22%	N=54	18%	N=43	100%	N=245

Table 4: Question 4

Please rate how safe or unsafe you feel:	Very safe		Somewhat safe		Neither safe nor unsafe		Somewhat unsafe		Very unsafe		Total	
In your neighborhood during the day	64%	N=161	31%	N=77	3%	N=7	2%	N=5	0%	N=0	100%	N=250
In Athens-Clarke County's downtown/commercial area during the day	47%	N=114	41%	N=100	8%	N=19	4%	N=10	1%	N=2	100%	N=245

The National Citizen Survey™

Table 5: Question 5

Please rate each of the following characteristics as they relate to Athens-Clarke County as a whole:	Excellent		Good		Fair		Poor		Total	
Traffic flow on major streets	5%	N=11	39%	N=96	42%	N=103	14%	N=34	100%	N=244
Ease of public parking	5%	N=11	31%	N=74	43%	N=102	21%	N=51	100%	N=238
Ease of travel by car in Athens-Clarke County	10%	N=25	53%	N=130	34%	N=83	3%	N=7	100%	N=245
Ease of travel by public transportation in Athens-Clarke County	18%	N=29	31%	N=49	34%	N=55	17%	N=27	100%	N=161
Ease of travel by bicycle in Athens-Clarke County	7%	N=11	26%	N=40	39%	N=60	28%	N=43	100%	N=153
Ease of walking in Athens-Clarke County	12%	N=28	42%	N=96	36%	N=82	11%	N=24	100%	N=230
Availability of paths and walking trails	14%	N=29	42%	N=90	36%	N=78	8%	N=17	100%	N=214
Air quality	10%	N=24	64%	N=153	22%	N=53	4%	N=10	100%	N=240
Cleanliness of Athens-Clarke County	5%	N=12	47%	N=118	40%	N=99	8%	N=21	100%	N=249
Overall appearance of Athens-Clarke County	8%	N=19	61%	N=152	29%	N=72	2%	N=5	100%	N=247
Public places where people want to spend time	18%	N=43	60%	N=146	18%	N=43	4%	N=10	100%	N=242
Variety of housing options	11%	N=25	36%	N=81	32%	N=72	22%	N=50	100%	N=229
Availability of affordable quality housing	10%	N=22	35%	N=77	32%	N=70	24%	N=53	100%	N=221
Fitness opportunities (including exercise classes and paths or trails, etc.)	23%	N=54	55%	N=130	18%	N=44	4%	N=10	100%	N=237
Recreational opportunities	20%	N=46	56%	N=129	20%	N=45	4%	N=9	100%	N=229
Availability of affordable quality food	26%	N=64	53%	N=130	16%	N=40	4%	N=11	100%	N=245
Availability of affordable quality health care	15%	N=35	43%	N=97	27%	N=61	15%	N=34	100%	N=227
Availability of preventive health services	14%	N=30	53%	N=113	23%	N=50	10%	N=23	100%	N=215
Availability of affordable quality mental health care	9%	N=14	36%	N=57	34%	N=53	22%	N=34	100%	N=158

Table 6: Question 6

Please rate each of the following characteristics as they relate to Athens-Clarke County as a whole:	Excellent		Good		Fair		Poor		Total	
Availability of affordable quality child care/preschool	13%	N=13	29%	N=31	39%	N=41	19%	N=20	100%	N=104
K-12 education	9%	N=13	27%	N=39	44%	N=65	20%	N=29	100%	N=147
Adult educational opportunities	27%	N=48	48%	N=87	16%	N=29	9%	N=17	100%	N=181
Opportunities to attend cultural/arts/music activities	43%	N=101	40%	N=94	13%	N=30	4%	N=9	100%	N=234
Opportunities to participate in religious or spiritual events and activities	47%	N=91	38%	N=75	13%	N=25	2%	N=4	100%	N=194
Employment opportunities	9%	N=20	43%	N=95	34%	N=75	15%	N=33	100%	N=222
Shopping opportunities	23%	N=57	47%	N=118	26%	N=65	3%	N=8	100%	N=248
Cost of living in Athens-Clarke County	18%	N=44	48%	N=118	25%	N=61	9%	N=23	100%	N=246
Overall quality of business and service establishments in Athens-Clarke County	15%	N=36	65%	N=156	17%	N=40	4%	N=10	100%	N=241
Vibrant downtown/commercial area	31%	N=74	47%	N=110	16%	N=38	6%	N=15	100%	N=237
Overall quality of new development in Athens-Clarke County	12%	N=28	49%	N=114	32%	N=74	7%	N=17	100%	N=233
Opportunities to participate in social events and activities	27%	N=64	54%	N=129	18%	N=42	1%	N=3	100%	N=237
Opportunities to volunteer	40%	N=82	48%	N=99	9%	N=18	3%	N=7	100%	N=206
Opportunities to participate in community matters	28%	N=60	42%	N=90	23%	N=48	7%	N=15	100%	N=212
Openness and acceptance of the community toward people of diverse backgrounds	17%	N=39	43%	N=101	31%	N=73	9%	N=22	100%	N=235
Neighborliness of residents in Athens-Clarke County	14%	N=34	44%	N=105	35%	N=82	7%	N=16	100%	N=236

The National Citizen Survey™

Table 7: Question 7

Please indicate whether or not you have done each of the following in the last 12 months.	No		Yes		Total	
Made efforts to conserve water	20%	N=50	80%	N=200	100%	N=250
Made efforts to make your home more energy efficient	44%	N=110	56%	N=140	100%	N=250
Observed a code violation or other hazard in Athens-Clarke County (weeds, abandoned buildings, etc.)	54%	N=134	46%	N=114	100%	N=248
Household member was a victim of a crime in Athens-Clarke County	90%	N=225	10%	N=25	100%	N=250
Reported a crime to the police in Athens-Clarke County	79%	N=197	21%	N=53	100%	N=250
Stocked supplies in preparation for an emergency	65%	N=163	35%	N=86	100%	N=249
Campaigned or advocated for an issue, cause or candidate	73%	N=182	27%	N=67	100%	N=249
Contacted Athens-Clarke County (in-person, phone, email or web) for help or information	49%	N=124	51%	N=126	100%	N=250
Contacted Athens-Clarke County elected officials (in-person, phone, email or web) to express your opinion	82%	N=205	18%	N=45	100%	N=250

Table 8: Question 8

In the last 12 months, about how many times, if at all, have you or other household members done each of the following in Athens-Clarke County?	2 times a week or more		2-4 times a month		Once a month or less		Not at all		Total	
Used Athens-Clarke County recreation centers or their services	8%	N=21	20%	N=50	32%	N=81	39%	N=98	100%	N=250
Visited a neighborhood park or County park	16%	N=40	18%	N=46	45%	N=112	21%	N=51	100%	N=249
Used Athens-Clarke County public libraries or their services	7%	N=18	14%	N=35	37%	N=92	42%	N=104	100%	N=250
Participated in religious or spiritual activities in Athens-Clarke County	16%	N=40	23%	N=56	19%	N=46	43%	N=106	100%	N=249
Attended a County-sponsored event	3%	N=8	8%	N=19	47%	N=115	42%	N=104	100%	N=247
Used bus, rail, subway or other public transportation instead of driving	8%	N=21	11%	N=27	17%	N=42	64%	N=159	100%	N=250
Carpooled with other adults or children instead of driving alone	16%	N=39	24%	N=58	17%	N=41	43%	N=104	100%	N=241
Walked or biked instead of driving	18%	N=45	12%	N=29	24%	N=61	46%	N=113	100%	N=248
Volunteered your time to some group/activity in Athens-Clarke County	7%	N=18	16%	N=39	20%	N=50	57%	N=142	100%	N=248
Participated in a club	6%	N=15	11%	N=28	17%	N=41	66%	N=165	100%	N=249
Talked to or visited with your immediate neighbors	20%	N=49	40%	N=99	23%	N=57	17%	N=42	100%	N=247
Done a favor for a neighbor	10%	N=26	19%	N=46	37%	N=92	34%	N=84	100%	N=249

Table 9: Question 9

Thinking about local public meetings (of local elected officials like County Council or County Commissioners, advisory boards, town halls, HOA, neighborhood watch, etc.), in the last 12 months, about how many times, if at all, have you or other household members attended or watched a local public meeting?	2 times a week or more		2-4 times a month		Once a month or less		Not at all		Total	
Attended a local public meeting	0%	N=1	4%	N=10	18%	N=45	77%	N=187	100%	N=243
Watched (online or on television) a local public meeting	0%	N=1	5%	N=13	16%	N=39	78%	N=190	100%	N=243

Table 10: Question 10

Please rate the quality of each of the following services in Athens-Clarke County:	Excellent		Good		Fair		Poor		Total	
Police services	27%	N=57	54%	N=113	13%	N=28	6%	N=13	100%	N=210
Fire services	39%	N=69	53%	N=94	7%	N=12	1%	N=1	100%	N=177
Ambulance or emergency medical services	36%	N=62	48%	N=84	11%	N=19	5%	N=8	100%	N=174
Crime prevention	14%	N=27	41%	N=78	36%	N=69	9%	N=18	100%	N=193
Fire prevention and education	17%	N=22	54%	N=71	23%	N=31	6%	N=8	100%	N=131
Traffic enforcement	17%	N=37	49%	N=110	26%	N=59	9%	N=20	100%	N=226

The National Citizen Survey™

Please rate the quality of each of the following services in Athens-Clarke County:	Excellent		Good		Fair		Poor		Total	
Street repair	6%	N=15	35%	N=82	41%	N=95	18%	N=42	100%	N=234
Street cleaning	10%	N=23	40%	N=92	41%	N=95	10%	N=23	100%	N=233
Street lighting	7%	N=17	40%	N=100	38%	N=95	15%	N=36	100%	N=247
Sidewalk maintenance	8%	N=20	40%	N=95	36%	N=86	15%	N=35	100%	N=236
Traffic signal timing	7%	N=17	43%	N=104	33%	N=80	16%	N=39	100%	N=240
Bus or transit services	19%	N=29	47%	N=74	28%	N=43	6%	N=10	100%	N=156
Garbage collection	20%	N=35	63%	N=112	16%	N=28	1%	N=2	100%	N=177
Recycling	28%	N=52	51%	N=97	18%	N=34	4%	N=7	100%	N=191
Yard waste pick-up	18%	N=24	37%	N=52	25%	N=35	20%	N=28	100%	N=139
Storm drainage	9%	N=16	45%	N=81	38%	N=67	9%	N=15	100%	N=179
Drinking water	18%	N=39	60%	N=133	18%	N=39	4%	N=9	100%	N=221
Sewer services	16%	N=29	52%	N=92	25%	N=43	7%	N=12	100%	N=177
Utility billing	12%	N=25	50%	N=105	26%	N=54	13%	N=27	100%	N=210
County parks	28%	N=59	57%	N=120	14%	N=29	2%	N=3	100%	N=212
Recreation programs or classes	16%	N=20	62%	N=76	17%	N=21	5%	N=6	100%	N=123
Recreation centers or facilities	13%	N=19	62%	N=90	20%	N=29	4%	N=6	100%	N=143
Land use, planning and zoning	11%	N=18	32%	N=53	43%	N=70	14%	N=23	100%	N=164
Code enforcement (weeds, abandoned buildings, etc.)	8%	N=13	28%	N=43	40%	N=63	24%	N=37	100%	N=157
Animal control	14%	N=22	47%	N=74	30%	N=47	9%	N=14	100%	N=158
Economic development	10%	N=17	44%	N=74	29%	N=49	17%	N=29	100%	N=169
Health services	15%	N=29	55%	N=107	21%	N=41	10%	N=19	100%	N=195
Public library services	33%	N=59	56%	N=99	10%	N=19	1%	N=1	100%	N=178
Public information services	17%	N=25	47%	N=71	33%	N=50	3%	N=5	100%	N=151
Cable television	9%	N=14	37%	N=59	33%	N=53	22%	N=36	100%	N=162
Emergency preparedness (services that prepare the community for natural disasters or other emergency situations)	15%	N=22	39%	N=58	40%	N=59	6%	N=10	100%	N=148
Preservation of natural areas such as open space, farmlands and greenbelts	16%	N=27	51%	N=87	22%	N=38	12%	N=20	100%	N=171
Athens-Clarke County open space	16%	N=28	41%	N=74	32%	N=57	11%	N=20	100%	N=179
County-sponsored special events	11%	N=14	58%	N=79	26%	N=36	5%	N=7	100%	N=136
Overall customer service by Athens-Clarke County employees (police, receptionists, planners, etc.)	22%	N=44	45%	N=90	28%	N=55	5%	N=10	100%	N=200

Table 11: Question 11

Overall, how would you rate the quality of the services provided by each of the following?	Excellent		Good		Fair		Poor		Total	
Athens-Clarke County Government	14%	N=29	61%	N=131	21%	N=44	4%	N=9	100%	N=214
The Federal Government	5%	N=11	33%	N=72	45%	N=96	17%	N=36	100%	N=216

Table 12: Question 12

Please rate the following categories of Athens-Clarke County government performance:	Excellent		Good		Fair		Poor		Total	
The value of services for the taxes paid to Athens-Clarke County	7%	N=15	44%	N=95	40%	N=86	8%	N=18	100%	N=214
The overall direction that Athens-Clarke County is taking	8%	N=17	53%	N=114	28%	N=60	12%	N=25	100%	N=216
The job Athens-Clarke County government does at welcoming citizen involvement	15%	N=29	44%	N=87	28%	N=54	13%	N=26	100%	N=196
Overall confidence in Athens-Clarke County government	8%	N=17	53%	N=115	30%	N=65	9%	N=19	100%	N=215

The National Citizen Survey™

Please rate the following categories of Athens-Clarke County government performance:	Excellent		Good		Fair		Poor		Total	
Generally acting in the best interest of the community	8%	N=17	52%	N=114	30%	N=66	10%	N=23	100%	N=221
Being honest	12%	N=23	48%	N=89	30%	N=56	10%	N=19	100%	N=186
Treating all residents fairly	10%	N=21	38%	N=78	32%	N=64	20%	N=41	100%	N=203

Table 13: Question 13

Please rate how important, if at all, you think it is for the Athens-Clarke County community to focus on each of the following in the coming two years:	Essential		Very important		Somewhat important		Not at all important		Total	
Overall feeling of safety in Athens-Clarke County	56%	N=140	34%	N=85	10%	N=25	0%	N=0	100%	N=249
Overall ease of getting to the places you usually have to visit	25%	N=61	51%	N=126	23%	N=57	2%	N=4	100%	N=248
Quality of overall natural environment in Athens-Clarke County	32%	N=80	54%	N=133	11%	N=28	3%	N=6	100%	N=248
Overall "built environment" of Athens-Clarke County (including overall design, buildings, parks and transportation systems)	30%	N=73	46%	N=114	21%	N=53	3%	N=7	100%	N=247
Health and wellness opportunities in Athens-Clarke County	41%	N=102	40%	N=99	18%	N=44	1%	N=2	100%	N=248
Overall opportunities for education and enrichment	48%	N=118	39%	N=95	12%	N=30	1%	N=4	100%	N=245
Overall economic health of Athens-Clarke County	48%	N=119	44%	N=108	7%	N=16	1%	N=2	100%	N=246
Sense of community	28%	N=69	43%	N=106	26%	N=64	4%	N=9	100%	N=247
Create a long-range vision/strategy for the County	49%	N=122	31%	N=76	19%	N=47	1%	N=3	100%	N=248

Table 14: Question 14

Athens-Clarke County is in the process of developing Corridor Plans for the Atlanta Highway, Lexington Road, and Prince Avenue, which aim to improve the experience and impression residents and visitors have of our community and increase understanding of the roads' impact on traffic, pedestrians, bicyclists, and commerce. How important, if at all, is it for the Athens-Clarke County government to address each of the following in the development of this plan?	Essential		Very important		Somewhat important		Not at all important		Total	
Develop additional medians	13%	N=29	25%	N=54	36%	N=77	26%	N=56	100%	N=216
Landscape existing medians	18%	N=43	21%	N=50	40%	N=94	21%	N=49	100%	N=236
Widen landscape buffers along the edge of roadways	15%	N=33	28%	N=62	33%	N=72	24%	N=53	100%	N=220
Create gateway/arrival features as you enter the community	16%	N=38	24%	N=57	30%	N=71	29%	N=67	100%	N=233
Improve access to commercial drives	17%	N=37	35%	N=74	35%	N=75	12%	N=26	100%	N=212
Improve or add turn lanes	29%	N=68	39%	N=93	26%	N=60	6%	N=15	100%	N=236
Improve signal timing	37%	N=86	34%	N=81	25%	N=58	4%	N=11	100%	N=236
Add new traffic signals on Lexington Road between Cherokee/Gaines School and Barnett Shoals Road	29%	N=57	24%	N=46	24%	N=46	23%	N=45	100%	N=194
Complete sidewalks along Lexington Road between Cherokee/Gaines School and Barnett Shoals Road	34%	N=71	39%	N=83	22%	N=47	5%	N=10	100%	N=211
Build pedestrian bridges or tunnels	29%	N=66	39%	N=89	17%	N=38	16%	N=35	100%	N=227
Improve bus stops with shelters, benches and other amenities	32%	N=74	34%	N=79	27%	N=62	6%	N=14	100%	N=230

Table 15: Question 15

To what extent, if any, do you support or oppose the Athens-Clarke County government working with neighboring cities and counties to address the following regional issues:	Strongly support		Somewhat support		Somewhat oppose		Strongly oppose		Total	
Drinking water	83%	N=189	15%	N=34	2%	N=4	0%	N=0	100%	N=227
Handling sewage	75%	N=166	20%	N=45	4%	N=8	1%	N=2	100%	N=221
Economic development opportunities	72%	N=164	22%	N=50	5%	N=12	0%	N=1	100%	N=227
Public transportation	72%	N=155	20%	N=42	7%	N=15	2%	N=4	100%	N=216

The National Citizen Survey™

Table 16: Question 16

To what extent, if any, would you support or oppose the Athens-Clarke County government allowing for some controlled residential or commercial development in the greenbelt and/or rural parts of our community?	Percent	Number
Strongly support	16%	N=34
Somewhat support	44%	N=93
Somewhat oppose	22%	N=48
Strongly oppose	18%	N=38
Total	100%	N=213

Table 17: Question 17

How frequently, if at all, did you use Athens Transit in the last 12 months?	Percent	Number
2 times a week or more	8%	N=19
2-4 times a month	7%	N=18
Once a month or less	10%	N=25
Not at all	75%	N=188
Total	100%	N=250

Table 18: Question 18

If you used Athens Transit once a month or less or not at all in the last 12 months, why? (Mark all that apply).	Percent	Number
Fares too high	3%	N=6
Routes are not frequent enough	12%	N=24
Routes are not direct enough	14%	N=28
Routes don't come near my house	16%	N=33
Routes don't go where I need to go	13%	N=25
Would rather drive my own car	66%	N=135
Other	8%	N=16
None of these	13%	N=26

Total may exceed 100% as respondents could select more than one option.

Table 19: Question D1

How often, if at all, do you do each of the following, considering all of the times you could?	Never		Rarely		Sometimes		Usually		Always		Total	
Recycle at home	10%	N=25	13%	N=32	10%	N=25	13%	N=33	54%	N=134	100%	N=250
Purchase goods or services from a business located in Athens-Clarke County	2%	N=6	2%	N=4	20%	N=49	48%	N=120	28%	N=69	100%	N=248
Eat at least 5 portions of fruits and vegetables a day	4%	N=10	18%	N=44	32%	N=80	27%	N=66	20%	N=49	100%	N=249
Participate in moderate or vigorous physical activity	1%	N=2	15%	N=38	29%	N=72	41%	N=101	14%	N=35	100%	N=249
Read or watch local news (via television, paper, computer, etc.)	5%	N=13	23%	N=58	23%	N=57	21%	N=53	27%	N=67	100%	N=249
Vote in local elections	21%	N=53	9%	N=22	14%	N=34	11%	N=27	45%	N=113	100%	N=249

The National Citizen Survey™

Table 20: Question D2

Would you say that in general your health is:	Percent	Number
Excellent	18%	N=46
Very good	42%	N=105
Good	29%	N=72
Fair	9%	N=23
Poor	1%	N=3
Total	100%	N=249

Table 21: Question D3

What impact, if any, do you think the economy will have on your family income in the next 6 months? Do you think the impact will be:	Percent	Number
Very positive	4%	N=11
Somewhat positive	24%	N=58
Neutral	61%	N=151
Somewhat negative	9%	N=22
Very negative	3%	N=7
Total	100%	N=248

Table 22: Question D4

What is your employment status?	Percent	Number
Working full time for pay	60%	N=149
Working part time for pay	18%	N=44
Unemployed, looking for paid work	3%	N=7
Unemployed, not looking for paid work	6%	N=16
Fully retired	14%	N=34
Total	100%	N=251

Table 23: Question D5

Do you work inside the boundaries of Athens-Clarke County?	Percent	Number
Yes, outside the home	58%	N=141
Yes, from home	6%	N=13
No	36%	N=88
Total	100%	N=242

Table 24: Question D6

How many years have you lived in Athens-Clarke County?	Percent	Number
Less than 2 years	11%	N=28
2 to 5 years	36%	N=90
6 to 10 years	12%	N=30
11 to 20 years	13%	N=34
More than 20 years	27%	N=67
Total	100%	N=249

The National Citizen Survey™

Table 25: Question D7

Which best describes the building you live in?	Percent	Number
One family house detached from any other houses	56%	N=140
Building with two or more homes (duplex, townhome, apartment or condominium)	41%	N=102
Mobile home	1%	N=2
Other	2%	N=6
Total	100%	N=249

Table 26: Question D8

Is this house, apartment or mobile home...	Percent	Number
Rented	55%	N=138
Owned	45%	N=112
Total	100%	N=251

Table 27: Question D9

About how much is your monthly housing cost for the place you live (including rent, mortgage payment, property tax, property insurance and homeowners' association (HOA) fees)?	Percent	Number
Less than \$300 per month	4%	N=9
\$300 to \$599 per month	21%	N=52
\$600 to \$999 per month	40%	N=98
\$1,000 to \$1,499 per month	22%	N=54
\$1,500 to \$2,499 per month	8%	N=20
\$2,500 or more per month	4%	N=11
Total	100%	N=243

Table 28: Question D10

Do any children 17 or under live in your household?	Percent	Number
No	81%	N=201
Yes	19%	N=48
Total	100%	N=248

Table 29: Question D10a

If yes – do the children attend school in the Athens-Clarke County School District?	Percent	Number
No	43%	N=20
Yes	57%	N=26
Total	100%	N=46

Table 30: Question D11

Are you or any other members of your household aged 65 or older?	Percent	Number
No	85%	N=210
Yes	15%	N=37
Total	100%	N=246

The National Citizen Survey™

Table 31: Question D12

How much do you anticipate your household's total income before taxes will be for the current year? (Please include in your total income money from all sources for all persons living in your household.)	Percent	Number
Less than \$25,000	29%	N=69
\$25,000 to \$49,999	24%	N=57
\$50,000 to \$99,999	31%	N=75
\$100,000 to \$149,999	10%	N=24
\$150,000 or more	6%	N=15
Total	100%	N=240

Table 32: Question D13

Are you Spanish, Hispanic or Latino?	Percent	Number
No, not Spanish, Hispanic or Latino	92%	N=225
Yes, I consider myself to be Spanish, Hispanic or Latino	8%	N=19
Total	100%	N=244

Table 33: Question D14

What is your race? (Mark one or more races to indicate what race(s) you consider yourself to be.)	Percent	Number
American Indian or Alaskan Native	1%	N=2
Asian, Asian Indian or Pacific Islander	6%	N=15
Black or African American	24%	N=59
White	71%	N=174
Other	5%	N=11

Total may exceed 100% as respondents could select more than one option.

Table 34: Question D15

In which category is your age?	Percent	Number
18 to 24 years	19%	N=48
25 to 34 years	32%	N=78
35 to 44 years	15%	N=37
45 to 54 years	11%	N=26
55 to 64 years	10%	N=26
65 to 74 years	9%	N=23
75 years or older	4%	N=10
Total	100%	N=247

Table 35: Question D16

What is your sex?	Percent	Number
Female	54%	N=132
Male	46%	N=113
Total	100%	N=244

The National Citizen Survey™

Table 36: Question D17

Do you consider a cell phone or landline your primary telephone number?	Percent	Number
Cell	84%	N=210
Land line	6%	N=14
Both	10%	N=24
Total	100%	N=248

Responses including “don’t know”

The following pages contain a complete set of responses to each question on the survey, including the “don’t know” responses. The percent of respondents giving a particular response is shown followed by the number of respondents (denoted with “N=”).

Table 37: Question 1

Please rate each of the following aspects of quality of life in Athens-Clarke County:	Excellent		Good		Fair		Poor		Don't know		Total	
Athens-Clarke County as a place to live	31%	N=77	57%	N=141	11%	N=27	1%	N=3	0%	N=0	100%	N=249
Your neighborhood as a place to live	34%	N=84	42%	N=106	22%	N=55	1%	N=3	0%	N=1	100%	N=249
Athens-Clarke County as a place to raise children	16%	N=39	34%	N=83	25%	N=61	6%	N=15	20%	N=49	100%	N=247
Athens-Clarke County as a place to work	21%	N=50	48%	N=118	17%	N=42	6%	N=15	8%	N=20	100%	N=246
Athens-Clarke County as a place to visit	42%	N=103	45%	N=112	13%	N=31	0%	N=0	1%	N=1	100%	N=249
Athens-Clarke County as a place to retire	28%	N=68	27%	N=66	14%	N=35	7%	N=17	25%	N=61	100%	N=248
The overall quality of life in Athens-Clarke County	22%	N=55	58%	N=144	18%	N=46	1%	N=2	0%	N=0	100%	N=247

Table 38: Question 2

Please rate each of the following characteristics as they relate to Athens-Clarke County as a whole:	Excellent		Good		Fair		Poor		Don't know		Total	
Overall feeling of safety in Athens-Clarke County	11%	N=27	57%	N=141	28%	N=70	4%	N=10	0%	N=0	100%	N=248
Overall ease of getting to the places you usually have to visit	25%	N=61	56%	N=140	15%	N=37	4%	N=10	0%	N=0	100%	N=248
Quality of overall natural environment in Athens-Clarke County	20%	N=49	62%	N=152	16%	N=39	1%	N=2	1%	N=2	100%	N=244
Overall "built environment" of Athens-Clarke County (including overall design, buildings, parks and transportation systems)	9%	N=21	58%	N=144	27%	N=66	5%	N=11	2%	N=4	100%	N=247
Health and wellness opportunities in Athens-Clarke County	17%	N=43	52%	N=129	18%	N=45	5%	N=12	7%	N=18	100%	N=247
Overall opportunities for education and enrichment	31%	N=78	36%	N=91	19%	N=47	6%	N=14	8%	N=19	100%	N=248
Overall economic health of Athens-Clarke County	7%	N=18	32%	N=79	34%	N=85	19%	N=47	8%	N=19	100%	N=248
Sense of community	13%	N=32	43%	N=108	33%	N=83	9%	N=22	1%	N=3	100%	N=248
Overall image or reputation of Athens-Clarke County	14%	N=36	55%	N=136	25%	N=63	3%	N=8	2%	N=5	100%	N=248

Table 39: Question 3

Please indicate how likely or unlikely you are to do each of the following:	Very likely		Somewhat likely		Somewhat unlikely		Very unlikely		Don't know		Total	
Recommend living in Athens-Clarke County to someone who asks	37%	N=92	49%	N=120	12%	N=30	2%	N=5	0%	N=1	100%	N=248
Remain in Athens-Clarke County for the next five years	45%	N=112	14%	N=36	22%	N=54	17%	N=43	2%	N=4	100%	N=249

Table 40: Question 4

Please rate how safe or unsafe you feel:	Very safe		Somewhat safe		Neither safe nor unsafe		Somewhat unsafe		Very unsafe		Don't know		Total	
In your neighborhood during the day	64%	N=161	31%	N=77	3%	N=7	2%	N=5	0%	N=0	0%	N=0	100%	N=250
In Athens-Clarke County's downtown/commercial area during the day	46%	N=114	40%	N=100	8%	N=19	4%	N=10	1%	N=2	2%	N=4	100%	N=249

The National Citizen Survey™

Table 41: Question 5

Please rate each of the following characteristics as they relate to Athens-Clarke County as a whole:	Excellent		Good		Fair		Poor		Don't know		Total	
Traffic flow on major streets	5%	N=11	39%	N=96	42%	N=103	14%	N=34	0%	N=1	100%	N=245
Ease of public parking	5%	N=11	30%	N=74	42%	N=102	21%	N=51	2%	N=6	100%	N=244
Ease of travel by car in Athens-Clarke County	10%	N=25	52%	N=130	33%	N=83	3%	N=7	1%	N=3	100%	N=248
Ease of travel by public transportation in Athens-Clarke County	12%	N=29	20%	N=49	22%	N=55	11%	N=27	35%	N=85	100%	N=246
Ease of travel by bicycle in Athens-Clarke County	4%	N=11	16%	N=40	24%	N=60	17%	N=43	38%	N=95	100%	N=248
Ease of walking in Athens-Clarke County	11%	N=28	39%	N=96	33%	N=82	10%	N=24	7%	N=18	100%	N=248
Availability of paths and walking trails	12%	N=29	36%	N=90	31%	N=78	7%	N=17	14%	N=35	100%	N=249
Air quality	10%	N=24	61%	N=153	21%	N=53	4%	N=10	4%	N=9	100%	N=249
Cleanliness of Athens-Clarke County	5%	N=12	47%	N=118	40%	N=99	8%	N=21	0%	N=0	100%	N=249
Overall appearance of Athens-Clarke County	8%	N=19	61%	N=152	29%	N=72	2%	N=5	0%	N=1	100%	N=248
Public places where people want to spend time	17%	N=43	59%	N=146	17%	N=43	4%	N=10	3%	N=7	100%	N=249
Variety of housing options	10%	N=25	33%	N=81	29%	N=72	20%	N=50	8%	N=19	100%	N=248
Availability of affordable quality housing	9%	N=22	31%	N=77	28%	N=70	21%	N=53	11%	N=27	100%	N=248
Fitness opportunities (including exercise classes and paths or trails, etc.)	22%	N=54	52%	N=130	17%	N=44	4%	N=10	5%	N=12	100%	N=249
Recreational opportunities	19%	N=46	52%	N=129	18%	N=45	4%	N=9	8%	N=20	100%	N=248
Availability of affordable quality food	26%	N=64	52%	N=130	16%	N=40	4%	N=11	2%	N=5	100%	N=249
Availability of affordable quality health care	14%	N=35	39%	N=97	25%	N=61	14%	N=34	9%	N=22	100%	N=249
Availability of preventive health services	12%	N=30	45%	N=113	20%	N=50	9%	N=23	14%	N=34	100%	N=249
Availability of affordable quality mental health care	5%	N=14	23%	N=57	21%	N=53	14%	N=34	37%	N=91	100%	N=248

Table 42: Question 6

Please rate each of the following characteristics as they relate to Athens-Clarke County as a whole:	Excellent		Good		Fair		Poor		Don't know		Total	
Availability of affordable quality child care/preschool	5%	N=13	12%	N=31	17%	N=41	8%	N=20	58%	N=142	100%	N=247
K-12 education	5%	N=13	16%	N=39	27%	N=65	12%	N=29	40%	N=98	100%	N=245
Adult educational opportunities	20%	N=48	36%	N=87	12%	N=29	7%	N=17	26%	N=62	100%	N=243
Opportunities to attend cultural/arts/music activities	41%	N=101	38%	N=94	12%	N=30	4%	N=9	5%	N=13	100%	N=247
Opportunities to participate in religious or spiritual events and activities	37%	N=91	30%	N=75	10%	N=25	2%	N=4	22%	N=54	100%	N=249
Employment opportunities	8%	N=20	38%	N=95	30%	N=75	13%	N=33	10%	N=26	100%	N=248
Shopping opportunities	23%	N=57	47%	N=118	26%	N=65	3%	N=8	0%	N=1	100%	N=249
Cost of living in Athens-Clarke County	18%	N=44	48%	N=118	25%	N=61	9%	N=23	0%	N=1	100%	N=247
Overall quality of business and service establishments in Athens-Clarke County	14%	N=36	63%	N=156	16%	N=40	4%	N=10	2%	N=6	100%	N=247
Vibrant downtown/commercial area	30%	N=74	44%	N=110	15%	N=38	6%	N=15	5%	N=12	100%	N=249
Overall quality of new development in Athens-Clarke County	11%	N=28	46%	N=114	30%	N=74	7%	N=17	6%	N=16	100%	N=248
Opportunities to participate in social events and activities	26%	N=64	52%	N=129	17%	N=42	1%	N=3	5%	N=12	100%	N=249
Opportunities to volunteer	33%	N=82	40%	N=99	7%	N=18	3%	N=7	18%	N=44	100%	N=249
Opportunities to participate in community matters	24%	N=60	36%	N=90	19%	N=48	6%	N=15	14%	N=36	100%	N=248
Openness and acceptance of the community toward people of diverse backgrounds	16%	N=39	41%	N=101	29%	N=73	9%	N=22	6%	N=14	100%	N=249
Neighborliness of residents in Athens-Clarke County	14%	N=34	42%	N=105	33%	N=82	6%	N=16	5%	N=13	100%	N=249

The National Citizen Survey™

Table 43: Question 7

Please indicate whether or not you have done each of the following in the last 12 months.	No		Yes		Total	
Made efforts to conserve water	20%	N=50	80%	N=200	100%	N=250
Made efforts to make your home more energy efficient	44%	N=110	56%	N=140	100%	N=250
Observed a code violation or other hazard in Athens-Clarke County (weeds, abandoned buildings, etc.)	54%	N=134	46%	N=114	100%	N=248
Household member was a victim of a crime in Athens-Clarke County	90%	N=225	10%	N=25	100%	N=250
Reported a crime to the police in Athens-Clarke County	79%	N=197	21%	N=53	100%	N=250
Stocked supplies in preparation for an emergency	65%	N=163	35%	N=86	100%	N=249
Campaigned or advocated for an issue, cause or candidate	73%	N=182	27%	N=67	100%	N=249
Contacted Athens-Clarke County (in-person, phone, email or web) for help or information	49%	N=124	51%	N=126	100%	N=250
Contacted Athens-Clarke County elected officials (in-person, phone, email or web) to express your opinion	82%	N=205	18%	N=45	100%	N=250

Table 44: Question 8

In the last 12 months, about how many times, if at all, have you or other household members done each of the following in Athens-Clarke County?	2 times a week or more		2-4 times a month		Once a month or less		Not at all		Total	
Used Athens-Clarke County recreation centers or their services	8%	N=21	20%	N=50	32%	N=81	39%	N=98	100%	N=250
Visited a neighborhood park or County park	16%	N=40	18%	N=46	45%	N=112	21%	N=51	100%	N=249
Used Athens-Clarke County public libraries or their services	7%	N=18	14%	N=35	37%	N=92	42%	N=104	100%	N=250
Participated in religious or spiritual activities in Athens-Clarke County	16%	N=40	23%	N=56	19%	N=46	43%	N=106	100%	N=249
Attended a County-sponsored event	3%	N=8	8%	N=19	47%	N=115	42%	N=104	100%	N=247
Used bus, rail, subway or other public transportation instead of driving	8%	N=21	11%	N=27	17%	N=42	64%	N=159	100%	N=250
Carpooled with other adults or children instead of driving alone	16%	N=39	24%	N=58	17%	N=41	43%	N=104	100%	N=241
Walked or biked instead of driving	18%	N=45	12%	N=29	24%	N=61	46%	N=113	100%	N=248
Volunteered your time to some group/activity in Athens-Clarke County	7%	N=18	16%	N=39	20%	N=50	57%	N=142	100%	N=248
Participated in a club	6%	N=15	11%	N=28	17%	N=41	66%	N=165	100%	N=249
Talked to or visited with your immediate neighbors	20%	N=49	40%	N=99	23%	N=57	17%	N=42	100%	N=247
Done a favor for a neighbor	10%	N=26	19%	N=46	37%	N=92	34%	N=84	100%	N=249

Table 45: Question 9

Thinking about local public meetings (of local elected officials like County Council or County Commissioners, advisory boards, town halls, HOA, neighborhood watch, etc.), in the last 12 months, about how many times, if at all, have you or other household members attended or watched a local public meeting?	2 times a week or more		2-4 times a month		Once a month or less		Not at all		Total	
Attended a local public meeting	0%	N=1	4%	N=10	18%	N=45	77%	N=187	100%	N=243
Watched (online or on television) a local public meeting	0%	N=1	5%	N=13	16%	N=39	78%	N=190	100%	N=243

Table 46: Question 10

Please rate the quality of each of the following services in Athens-Clarke County:	Excellent		Good		Fair		Poor		Don't know		Total	
Police services	23%	N=57	45%	N=113	11%	N=28	5%	N=13	15%	N=38	100%	N=248
Fire services	28%	N=69	38%	N=94	5%	N=12	0%	N=1	29%	N=72	100%	N=249
Ambulance or emergency medical services	25%	N=62	34%	N=84	8%	N=19	3%	N=8	30%	N=75	100%	N=249
Crime prevention	11%	N=27	32%	N=78	28%	N=69	7%	N=18	22%	N=54	100%	N=246
Fire prevention and education	9%	N=22	29%	N=71	12%	N=31	3%	N=8	47%	N=117	100%	N=248
Traffic enforcement	15%	N=37	45%	N=110	24%	N=59	8%	N=20	8%	N=20	100%	N=246

The National Citizen Survey™

Please rate the quality of each of the following services in Athens-Clarke County:	Excellent		Good		Fair		Poor		Don't know		Total	
Street repair	6%	N=15	33%	N=82	38%	N=95	17%	N=42	6%	N=15	100%	N=248
Street cleaning	9%	N=23	37%	N=92	38%	N=95	9%	N=23	6%	N=16	100%	N=248
Street lighting	7%	N=17	40%	N=100	38%	N=95	15%	N=36	0%	N=1	100%	N=248
Sidewalk maintenance	8%	N=20	38%	N=95	35%	N=86	14%	N=35	5%	N=12	100%	N=248
Traffic signal timing	7%	N=17	42%	N=104	32%	N=80	16%	N=39	3%	N=8	100%	N=247
Bus or transit services	12%	N=29	30%	N=74	17%	N=43	4%	N=10	37%	N=92	100%	N=249
Garbage collection	14%	N=35	45%	N=112	11%	N=28	1%	N=2	28%	N=70	100%	N=247
Recycling	21%	N=52	39%	N=97	14%	N=34	3%	N=7	23%	N=57	100%	N=248
Yard waste pick-up	10%	N=24	21%	N=52	14%	N=35	11%	N=28	44%	N=108	100%	N=248
Storm drainage	6%	N=16	33%	N=81	27%	N=67	6%	N=15	27%	N=67	100%	N=246
Drinking water	16%	N=39	54%	N=133	16%	N=39	4%	N=9	11%	N=28	100%	N=249
Sewer services	12%	N=29	37%	N=92	17%	N=43	5%	N=12	29%	N=72	100%	N=249
Utility billing	10%	N=25	42%	N=105	22%	N=54	11%	N=27	15%	N=38	100%	N=248
County parks	24%	N=59	49%	N=120	12%	N=29	1%	N=3	14%	N=34	100%	N=246
Recreation programs or classes	8%	N=20	31%	N=76	9%	N=21	2%	N=6	50%	N=121	100%	N=244
Recreation centers or facilities	8%	N=19	37%	N=90	12%	N=29	2%	N=6	40%	N=97	100%	N=241
Land use, planning and zoning	8%	N=18	22%	N=53	28%	N=70	9%	N=23	33%	N=81	100%	N=245
Code enforcement (weeds, abandoned buildings, etc.)	5%	N=13	18%	N=43	26%	N=63	15%	N=37	36%	N=87	100%	N=244
Animal control	9%	N=22	30%	N=74	19%	N=47	6%	N=14	36%	N=89	100%	N=247
Economic development	7%	N=17	30%	N=74	20%	N=49	12%	N=29	30%	N=74	100%	N=244
Health services	12%	N=29	44%	N=107	17%	N=41	8%	N=19	21%	N=51	100%	N=246
Public library services	24%	N=59	40%	N=99	8%	N=19	0%	N=1	28%	N=69	100%	N=247
Public information services	10%	N=25	29%	N=71	20%	N=50	2%	N=5	39%	N=96	100%	N=246
Cable television	6%	N=14	24%	N=59	21%	N=53	15%	N=36	35%	N=87	100%	N=249
Emergency preparedness (services that prepare the community for natural disasters or other emergency situations)	9%	N=22	24%	N=58	24%	N=59	4%	N=10	40%	N=97	100%	N=245
Preservation of natural areas such as open space, farmlands and greenbelts	11%	N=27	36%	N=87	16%	N=38	8%	N=20	30%	N=72	100%	N=243
Athens-Clarke County open space	11%	N=28	30%	N=74	23%	N=57	8%	N=20	27%	N=67	100%	N=246
County-sponsored special events	6%	N=14	33%	N=79	15%	N=36	3%	N=7	43%	N=103	100%	N=239
Overall customer service by Athens-Clarke County employees (police, receptionists, planners, etc.)	18%	N=44	37%	N=90	22%	N=55	4%	N=10	18%	N=45	100%	N=245

Table 47: Question 11

Overall, how would you rate the quality of the services provided by each of the following?	Excellent		Good		Fair		Poor		Don't know		Total	
Athens-Clarke County Government	12%	N=29	53%	N=131	18%	N=44	4%	N=9	14%	N=34	100%	N=248
The Federal Government	5%	N=11	29%	N=72	39%	N=96	15%	N=36	13%	N=32	100%	N=247

Table 48: Question 12

Please rate the following categories of Athens-Clarke County government performance:	Excellent		Good		Fair		Poor		Don't know		Total	
The value of services for the taxes paid to Athens-Clarke County	6%	N=15	39%	N=95	35%	N=86	7%	N=18	13%	N=32	100%	N=247
The overall direction that Athens-Clarke County is taking	7%	N=17	46%	N=114	24%	N=60	10%	N=25	13%	N=31	100%	N=246
The job Athens-Clarke County government does at welcoming citizen involvement	12%	N=29	35%	N=87	22%	N=54	11%	N=26	21%	N=51	100%	N=247

The National Citizen Survey™

Please rate the following categories of Athens-Clarke County government performance:	Excellent		Good		Fair		Poor		Don't know		Total	
Overall confidence in Athens-Clarke County government	7%	N=17	46%	N=115	26%	N=65	8%	N=19	13%	N=32	100%	N=248
Generally acting in the best interest of the community	7%	N=17	46%	N=114	27%	N=66	9%	N=23	11%	N=26	100%	N=247
Being honest	9%	N=23	36%	N=89	23%	N=56	8%	N=19	25%	N=61	100%	N=247
Treating all residents fairly	8%	N=21	31%	N=78	26%	N=64	16%	N=41	18%	N=44	100%	N=248

Table 49: Question 13

Please rate how important, if at all, you think it is for the Athens-Clarke County community to focus on each of the following in the coming two years:	Essential		Very important		Somewhat important		Not at all important		Total	
Overall feeling of safety in Athens-Clarke County	56%	N=140	34%	N=85	10%	N=25	0%	N=0	100%	N=249
Overall ease of getting to the places you usually have to visit	25%	N=61	51%	N=126	23%	N=57	2%	N=4	100%	N=248
Quality of overall natural environment in Athens-Clarke County	32%	N=80	54%	N=133	11%	N=28	3%	N=6	100%	N=248
Overall "built environment" of Athens-Clarke County (including overall design, buildings, parks and transportation systems)	30%	N=73	46%	N=114	21%	N=53	3%	N=7	100%	N=247
Health and wellness opportunities in Athens-Clarke County	41%	N=102	40%	N=99	18%	N=44	1%	N=2	100%	N=248
Overall opportunities for education and enrichment	48%	N=118	39%	N=95	12%	N=30	1%	N=4	100%	N=245
Overall economic health of Athens-Clarke County	48%	N=119	44%	N=108	7%	N=16	1%	N=2	100%	N=246
Sense of community	28%	N=69	43%	N=106	26%	N=64	4%	N=9	100%	N=247
Create a long-range vision/strategy for the County	49%	N=122	31%	N=76	19%	N=47	1%	N=3	100%	N=248

Table 50: Question 14

Athens-Clarke County is in the process of developing Corridor Plans for the Atlanta Highway, Lexington Road, and Prince Avenue, which aim to improve the experience and impression residents and visitors have of our community and increase understanding of the roads' impact on traffic, pedestrians, bicyclists, and commerce. How important, if at all, is it for the Athens-Clarke County government to address each of the following in the development of this plan?	Essential		Very important		Somewhat important		Not at all important		Don't know		Total	
Develop additional medians	12%	N=29	22%	N=54	32%	N=77	23%	N=56	11%	N=27	100%	N=243
Landscape existing medians	18%	N=43	21%	N=50	39%	N=94	20%	N=49	3%	N=7	100%	N=243
Widen landscape buffers along the edge of roadways	14%	N=33	26%	N=62	30%	N=72	22%	N=53	7%	N=16	100%	N=237
Create gateway/arrival features as you enter the community	16%	N=38	23%	N=57	29%	N=71	28%	N=67	4%	N=10	100%	N=243
Improve access to commercial drives	16%	N=37	31%	N=74	32%	N=75	11%	N=26	10%	N=24	100%	N=236
Improve or add turn lanes	28%	N=68	39%	N=93	25%	N=60	6%	N=15	2%	N=5	100%	N=241
Improve signal timing	36%	N=86	33%	N=81	24%	N=58	4%	N=11	3%	N=6	100%	N=242
Add new traffic signals on Lexington Road between Cherokee/Gaines School and Barnett Shoals Road	23%	N=57	19%	N=46	19%	N=46	19%	N=45	21%	N=51	100%	N=244
Complete sidewalks along Lexington Road between Cherokee/Gaines School and Barnett Shoals Road	29%	N=71	34%	N=83	20%	N=47	4%	N=10	12%	N=30	100%	N=241
Build pedestrian bridges or tunnels	27%	N=66	37%	N=89	15%	N=38	15%	N=35	6%	N=15	100%	N=242
Improve bus stops with shelters, benches and other amenities	31%	N=74	32%	N=79	26%	N=62	6%	N=14	6%	N=14	100%	N=244

The National Citizen Survey™

Table 51: Question 15

To what extent, if any, do you support or oppose the Athens-Clarke County government working with neighboring cities and counties to address the following regional issues:	Strongly support		Somewhat support		Somewhat oppose		Strongly oppose		Don't know		Total	
Drinking water	76%	N=189	14%	N=34	2%	N=4	0%	N=0	9%	N=22	100%	N=249
Handling sewage	68%	N=166	18%	N=45	3%	N=8	1%	N=2	10%	N=23	100%	N=245
Economic development opportunities	66%	N=164	20%	N=50	5%	N=12	0%	N=1	9%	N=22	100%	N=249
Public transportation	62%	N=155	17%	N=42	6%	N=15	2%	N=4	13%	N=32	100%	N=248

Table 52: Question 16

To what extent, if any, would you support or oppose the Athens-Clarke County government allowing for some controlled residential or commercial development in the greenbelt and/or rural parts of our community?	Percent	Number
Strongly support	14%	N=34
Somewhat support	38%	N=93
Somewhat oppose	19%	N=48
Strongly oppose	15%	N=38
Don't know	13%	N=33
Total	100%	N=246

Table 53: Question 17

How frequently, if at all, did you use Athens Transit in the last 12 months?	Percent	Number
2 times a week or more	8%	N=19
2-4 times a month	7%	N=18
Once a month or less	10%	N=25
Not at all	75%	N=188
Total	100%	N=250

Table 54: Question 18

If you used Athens Transit once a month or less or not at all in the last 12 months, why? (Mark all that apply).	Percent	Number
Fares too high	3%	N=6
Routes are not frequent enough	12%	N=24
Routes are not direct enough	14%	N=28
Routes don't come near my house	16%	N=33
Routes don't go where I need to go	13%	N=25
Would rather drive my own car	66%	N=135
Other	8%	N=16
None of these	13%	N=26

Total may exceed 100% as respondents could select more than one option.

The National Citizen Survey™

Table 55: Question D1

How often, if at all, do you do each of the following, considering all of the times you could?	Never		Rarely		Sometimes		Usually		Always		Total	
Recycle at home	10%	N=25	13%	N=32	10%	N=25	13%	N=33	54%	N=134	100%	N=250
Purchase goods or services from a business located in Athens-Clarke County	2%	N=6	2%	N=4	20%	N=49	48%	N=120	28%	N=69	100%	N=248
Eat at least 5 portions of fruits and vegetables a day	4%	N=10	18%	N=44	32%	N=80	27%	N=66	20%	N=49	100%	N=249
Participate in moderate or vigorous physical activity	1%	N=2	15%	N=38	29%	N=72	41%	N=101	14%	N=35	100%	N=249
Read or watch local news (via television, paper, computer, etc.)	5%	N=13	23%	N=58	23%	N=57	21%	N=53	27%	N=67	100%	N=249
Vote in local elections	21%	N=53	9%	N=22	14%	N=34	11%	N=27	45%	N=113	100%	N=249

Table 56: Question D2

Would you say that in general your health is:	Percent	Number
Excellent	18%	N=46
Very good	42%	N=105
Good	29%	N=72
Fair	9%	N=23
Poor	1%	N=3
Total	100%	N=249

Table 57: Question D3

What impact, if any, do you think the economy will have on your family income in the next 6 months? Do you think the impact will be:	Percent	Number
Very positive	4%	N=11
Somewhat positive	24%	N=58
Neutral	61%	N=151
Somewhat negative	9%	N=22
Very negative	3%	N=7
Total	100%	N=248

Table 58: Question D4

What is your employment status?	Percent	Number
Working full time for pay	60%	N=149
Working part time for pay	18%	N=44
Unemployed, looking for paid work	3%	N=7
Unemployed, not looking for paid work	6%	N=16
Fully retired	14%	N=34
Total	100%	N=251

Table 59: Question D5

Do you work inside the boundaries of Athens-Clarke County?	Percent	Number
Yes, outside the home	58%	N=141
Yes, from home	6%	N=13
No	36%	N=88
Total	100%	N=242

The National Citizen Survey™

Table 60: Question D6

How many years have you lived in Athens-Clarke County?	Percent	Number
Less than 2 years	11%	N=28
2 to 5 years	36%	N=90
6 to 10 years	12%	N=30
11 to 20 years	13%	N=34
More than 20 years	27%	N=67
Total	100%	N=249

Table 61: Question D7

Which best describes the building you live in?	Percent	Number
One family house detached from any other houses	56%	N=140
Building with two or more homes (duplex, townhome, apartment or condominium)	41%	N=102
Mobile home	1%	N=2
Other	2%	N=6
Total	100%	N=249

Table 62: Question D8

Is this house, apartment or mobile home...	Percent	Number
Rented	55%	N=138
Owned	45%	N=112
Total	100%	N=251

Table 63: Question D9

About how much is your monthly housing cost for the place you live (including rent, mortgage payment, property tax, property insurance and homeowners' association (HOA) fees)?	Percent	Number
Less than \$300 per month	4%	N=9
\$300 to \$599 per month	21%	N=52
\$600 to \$999 per month	40%	N=98
\$1,000 to \$1,499 per month	22%	N=54
\$1,500 to \$2,499 per month	8%	N=20
\$2,500 or more per month	4%	N=11
Total	100%	N=243

Table 64: Question D10

Do any children 17 or under live in your household?	Percent	Number
No	81%	N=201
Yes	19%	N=48
Total	100%	N=248

The National Citizen Survey™

Table 65: Question D10a

If yes – do the children attend school in the Athens-Clarke County School District?	Percent	Number
No	42%	N=20
Yes	55%	N=26
Don't know	3%	N=1
Total	100%	N=48

Table 66: Question D11

Are you or any other members of your household aged 65 or older?	Percent	Number
No	85%	N=210
Yes	15%	N=37
Total	100%	N=246

Table 67: Question D12

How much do you anticipate your household's total income before taxes will be for the current year? (Please include in your total income money from all sources for all persons living in your household.)	Percent	Number
Less than \$25,000	29%	N=69
\$25,000 to \$49,999	24%	N=57
\$50,000 to \$99,999	31%	N=75
\$100,000 to \$149,999	10%	N=24
\$150,000 or more	6%	N=15
Total	100%	N=240

Table 68: Question D13

Are you Spanish, Hispanic or Latino?	Percent	Number
No, not Spanish, Hispanic or Latino	92%	N=225
Yes, I consider myself to be Spanish, Hispanic or Latino	8%	N=19
Total	100%	N=244

Table 69: Question D14

What is your race? (Mark one or more races to indicate what race(s) you consider yourself to be.)	Percent	Number
American Indian or Alaskan Native	1%	N=2
Asian, Asian Indian or Pacific Islander	6%	N=15
Black or African American	24%	N=59
White	71%	N=174
Other	5%	N=11

Total may exceed 100% as respondents could select more than one option.

The National Citizen Survey™

Table 70: Question D15

In which category is your age?	Percent	Number
18 to 24 years	19%	N=48
25 to 34 years	32%	N=78
35 to 44 years	15%	N=37
45 to 54 years	11%	N=26
55 to 64 years	10%	N=26
65 to 74 years	9%	N=23
75 years or older	4%	N=10
Total	100%	N=247

Table 71: Question D16

What is your sex?	Percent	Number
Female	54%	N=132
Male	46%	N=113
Total	100%	N=244

Table 72: Question D17

Do you consider a cell phone or landline your primary telephone number?	Percent	Number
Cell	84%	N=210
Land line	6%	N=14
Both	10%	N=24
Total	100%	N=248

Appendix B: Benchmark Comparisons

Comparison Data

NRC's database of comparative resident opinion is comprised of resident perspectives gathered in surveys from over 500 communities whose residents evaluated the same kinds of topics on The National Citizen Survey™. The comparison evaluations are from the most recent survey completed in each community; most communities conduct surveys every year or in alternating years. NRC adds the latest results quickly upon survey completion, keeping the benchmark data fresh and relevant. The communities in the database represent a wide geographic and population range. Athens-Clarke County chose to have comparisons made to the entire database.

Interpreting the Results

Ratings are compared when there are at least five communities in which a similar question was asked. Where comparisons are available, four columns are provided in the table. The first column is Athens-Clarke County's "percent positive." The percent positive is the combination of the top two most positive response options (i.e., "excellent" and "good," "very safe" and "somewhat safe," etc.), or, in the case of resident behaviors/participation, the percent positive represents the proportion of respondents indicating "yes" or participating in an activity at least once a month. The second column is the rank assigned to Athens-Clarke County's rating among communities where a similar question was asked. The third column is the number of communities that asked a similar question. The final column shows the comparison of Athens-Clarke County's rating to the benchmark.

In that final column, Athens-Clarke County's results are noted as being "higher" than the benchmark, "lower" than the benchmark or "similar" to the benchmark, meaning that the average rating given by Athens-Clarke County residents is statistically similar to or different (greater or lesser) than the benchmark. More extreme differences are noted as "much higher" or "much lower."

Benchmark Database Characteristics	
Region	Percent
New England	3%
Middle Atlantic	5%
East North Central	15%
West North Central	13%
South Atlantic	22%
East South Central	3%
West South Central	7%
Mountain	16%
Pacific	16%
Population	Percent
Less than 10,000	10%
10,000 to 24,999	22%
25,000 to 49,999	23%
50,000 to 99,999	22%
100,000 or more	23%

National Benchmark Comparisons

Table 73: Community Characteristics General

	Percent positive	Rank	Number of communities in comparison	Comparison to benchmark
The overall quality of life in Athens-Clarke County	81%	264	478	Similar
Overall image or reputation of Athens-Clarke County	71%	222	365	Similar
Athens-Clarke County as a place to live	88%	239	410	Similar
Your neighborhood as a place to live	76%	196	326	Similar
Athens-Clarke County as a place to raise children	62%	323	399	Lower
Athens-Clarke County as a place to retire	72%	93	373	Similar
Overall appearance of Athens-Clarke County	69%	252	374	Similar

Table 74: Community Characteristics by Facet

		Percent positive	Rank	Number of communities in comparison	Comparison to benchmark
Safety	Overall feeling of safety in Athens-Clarke County	68%	281	349	Lower
	In your neighborhood during the day	95%	201	371	Similar
	In Athens-Clarke County's downtown/commercial area during the day	87%	218	325	Similar
Mobility	Overall ease of getting to the places you usually have to visit	81%	104	252	Similar
	Availability of paths and walking trails	56%	207	326	Similar
	Ease of walking in Athens-Clarke County	54%	222	314	Similar
	Ease of travel by bicycle in Athens-Clarke County	33%	255	316	Lower
	Ease of travel by public transportation in Athens-Clarke County	49%	48	213	Similar
	Ease of travel by car in Athens-Clarke County	63%	177	315	Similar
	Ease of public parking	36%	168	211	Lower
	Traffic flow on major streets	44%	194	359	Similar
Natural Environment	Quality of overall natural environment in Athens-Clarke County	83%	152	287	Similar
	Cleanliness of Athens-Clarke County	52%	246	294	Lower
	Air quality	74%	193	253	Similar
Built Environment	Overall "built environment" of Athens-Clarke County (including overall design, buildings, parks and transportation systems)	68%	115	241	Similar
	Overall quality of new development in Athens-Clarke County	61%	108	299	Similar
	Availability of affordable quality housing	45%	144	312	Similar
	Variety of housing options	47%	209	290	Similar
	Public places where people want to spend time	78%	87	234	Similar
Economy	Overall economic health of Athens-Clarke County	42%	205	247	Lower
	Vibrant downtown/commercial area	78%	30	225	Higher
	Overall quality of business and service establishments in Athens-Clarke County	79%	67	281	Similar
	Cost of living in Athens-Clarke County	66%	13	244	Higher
	Shopping opportunities	71%	82	305	Higher
	Employment opportunities	52%	95	321	Similar
	Athens-Clarke County as a place to visit	87%	40	263	Higher
	Athens-Clarke County as a place to work	74%	123	376	Similar
Recreation and Wellness	Health and wellness opportunities in Athens-Clarke County	75%	127	242	Similar
	Availability of affordable quality mental health care	44%	125	213	Similar

The National Citizen Survey™

		Percent positive	Rank	Number of communities in comparison	Comparison to benchmark
	Availability of preventive health services	66%	133	242	Similar
	Availability of affordable quality health care	58%	175	269	Similar
	Availability of affordable quality food	79%	46	247	Similar
	Recreational opportunities	77%	113	309	Similar
	Fitness opportunities (including exercise classes and paths or trails, etc.)	77%	93	232	Similar
Education and Enrichment	Overall opportunities for education and enrichment	73%	88	244	Similar
	Opportunities to participate in religious or spiritual events and activities	85%	12	209	Similar
	Opportunities to attend cultural/arts/music activities	83%	20	307	Higher
	Adult educational opportunities	75%	41	221	Higher
	K-12 education	36%	258	281	Much lower
	Availability of affordable quality child care/preschool	42%	179	260	Similar
Community Engagement	Opportunities to participate in social events and activities	81%	26	270	Higher
	Neighborliness of Athens-Clarke County	59%	141	236	Similar
	Openness and acceptance of the community toward people of diverse backgrounds	60%	168	303	Similar
	Opportunities to participate in community matters	70%	58	282	Similar
	Opportunities to volunteer	88%	16	274	Higher

Table 75: Governance General

	Percent positive	Rank	Number of communities in comparison	Comparison to benchmark
Services provided by Athens-Clarke County	75%	263	451	Similar
Overall customer service by Athens-Clarke County employees (police, receptionists, planners, etc.)	67%	258	394	Similar
Value of services for the taxes paid to Athens-Clarke County	52%	202	420	Similar
Overall direction that Athens-Clarke County is taking	61%	179	331	Similar
Job Athens-Clarke County government does at welcoming citizen involvement	59%	113	330	Similar
Overall confidence in Athens-Clarke County government	61%	103	247	Similar
Generally acting in the best interest of the community	60%	121	247	Similar
Being honest	60%	114	239	Similar
Treating all residents fairly	48%	170	244	Similar
Services provided by the Federal Government	39%	110	256	Similar

Table 76: Governance by Facet

		Percent positive	Rank	Number of communities in comparison	Comparison to benchmark
Safety	Police/Sheriff services	81%	287	489	Similar
	Fire services	93%	230	409	Similar
	Ambulance or emergency medical services	84%	279	369	Similar
	Crime prevention	55%	282	378	Similar
	Fire prevention and education	71%	242	298	Similar
	Animal control	61%	203	359	Similar
	Emergency preparedness (services that prepare the community for natural disasters or other emergency situations)	54%	186	287	Similar
	Traffic enforcement	65%	188	391	Similar
Mobility	Street repair	41%	261	415	Similar
	Street cleaning	50%	246	335	Similar
	Street lighting	47%	283	346	Similar
	Sidewalk maintenance	49%	208	337	Similar

The National Citizen Survey™

		Percent positive	Rank	Number of communities in comparison	Comparison to benchmark
	Traffic signal timing	50%	158	272	Similar
	Bus or transit services	66%	51	236	Higher
	Garbage collection	83%	283	375	Similar
	Recycling	78%	222	376	Similar
	Yard waste pick-up	55%	261	284	Lower
	Drinking water	78%	149	334	Similar
	Preservation of natural areas such as open space, farmlands and greenbelts	66%	114	265	Similar
	Athens-Clarke County open space	57%	130	222	Similar
	Storm drainage	54%	273	372	Similar
	Sewer services	68%	263	338	Similar
	Utility billing	62%	189	217	Similar
	Land use, planning and zoning	43%	153	317	Similar
	Code enforcement (weeds, abandoned buildings, etc.)	36%	303	406	Similar
	Cable television	45%	157	208	Similar
	Economic development	54%	172	297	Similar
	County parks	85%	167	342	Similar
	Recreation programs or classes	78%	156	342	Similar
	Recreation centers or facilities	75%	149	287	Similar
	Health services	70%	131	222	Similar
	County-sponsored special events	69%	154	267	Similar
	Public library services	89%	170	360	Similar
	Public information services	64%	162	296	Similar

Table 77: Participation General

	Percent positive	Rank	Number of communities in comparison	Comparison to benchmark
Sense of community	57%	218	323	Similar
Recommend living in Athens-Clarke County to someone who asks	86%	173	295	Similar
Remain in Athens-Clarke County for the next five years	60%	283	286	Much lower
Contacted Athens-Clarke County (in-person, phone, email or web) for help or information	51%	97	333	Similar

Table 78: Participation by Facet

		Percent positive	Rank	Number of communities in comparison	Comparison to benchmark
	Stocked supplies in preparation for an emergency	35%	105	213	Similar
	Did NOT report a crime to the police	79%	136	239	Similar
	Household member was NOT a victim of a crime	90%	125	283	Similar
	Used bus, rail, subway or other public transportation instead of driving	36%	51	194	Higher
	Carpooled with other adults or children instead of driving alone	57%	16	226	Higher
	Walked or biked instead of driving	54%	133	235	Similar
	Made efforts to conserve water	80%	124	221	Similar
	Made efforts to make your home more energy efficient	56%	221	222	Lower
	Recycle at home	77%	213	266	Similar
	Did NOT observe a code violation or other hazard in Athens-Clarke County	54%	119	228	Similar

The National Citizen Survey™

		Percent positive	Rank	Number of communities in comparison	Comparison to benchmark
Economy	NOT experiencing housing costs stress	65%	174	263	Similar
	Purchase goods or services from a business located in Athens-Clarke County	96%	159	232	Similar
	Economy will have positive impact on income	28%	170	264	Similar
	Work inside boundaries of Athens-Clarke County	64%	36	233	Much higher
Recreation and Wellness	Used Athens-Clarke County recreation centers or their services	61%	87	244	Similar
	Visited a neighborhood park or County park	79%	224	278	Similar
	Eat at least 5 portions of fruits and vegetables a day	78%	182	224	Similar
	Participate in moderate or vigorous physical activity	84%	138	228	Similar
	In very good to excellent health	61%	145	228	Similar
	Used Athens-Clarke County public libraries or their services	58%	181	251	Similar
Education and Enrichment	Participated in religious or spiritual activities in Athens-Clarke County	57%	44	205	Higher
	Attended County-sponsored event	58%	93	235	Similar
	Campaigned or advocated for an issue, cause or candidate	27%	70	216	Similar
Community Engagement	Contacted Athens-Clarke County elected officials (in-person, phone, email or web) to express your opinion	18%	106	231	Similar
	Volunteered your time to some group/activity in Athens-Clarke County	43%	105	272	Similar
	Participated in a club	34%	53	247	Similar
	Talked to or visited with your immediate neighbors	83%	214	229	Similar
	Done a favor for a neighbor	66%	221	225	Lower
	Attended a local public meeting	23%	100	272	Similar
	Watched (online or on television) a local public meeting	22%	130	233	Similar
	Read or watch local news (via television, paper, computer, etc.)	71%	225	233	Lower
	Vote in local elections	70%	246	266	Lower

Communities included in national comparisons

The communities included in Athens-Clarke County's comparisons are listed on the following pages along with their population according to the 2010 Census.

Adams County, CO441,603
 Airway Heights city, WA 6,114
 Albany city, OR 50,158
 Albemarle County, VA..... 98,970
 Albert Lea city, MN..... 18,016
 Alexandria city, VA139,966
 Algonquin village, IL..... 30,046
 Aliso Viejo city, CA 47,823
 Altoona city, IA 14,541
 American Canyon city, CA..... 19,454
 Ames city, IA 58,965
 Andover CDP, MA 8,762
 Ankeny city, IA 45,582
 Ann Arbor city, MI113,934
 Annapolis city, MD 38,394
 Apache Junction city, AZ..... 35,840
 Arapahoe County, CO572,003

Arkansas City city, AR..... 366
 Arlington city, TX365,438
 Arvada city, CO106,433
 Asheville city, NC 83,393
 Ashland city, OR 20,078
 Ashland town, MA 16,593
 Ashland town, VA..... 7,225
 Aspen city, CO 6,658
 Athens-Clarke County, GA115,452
 Auburn city, AL 53,380
 Augusta CCD, GA134,777
 Aurora city, CO325,078
 Austin city, TX790,390
 Avon town, CO 6,447
 Avon town, IN 12,446
 Avondale city, AZ 76,238
 Azusa city, CA 46,361

The National Citizen Survey™

Bainbridge Island city, WA.....	23,025	Charlottesville city, VA.....	43,475
Baltimore city, MD.....	620,961	Chattanooga city, TN.....	167,674
Bartonville town, TX.....	1,469	Chautauqua town, NY.....	4,464
Battle Creek city, MI.....	52,347	Chesterfield County, VA.....	316,236
Bay City city, MI.....	34,932	Citrus Heights city, CA.....	83,301
Bay Village city, OH.....	15,651	Clackamas County, OR.....	375,992
Baytown city, TX.....	71,802	Clarendon Hills village, IL.....	8,427
Bedford city, TX.....	46,979	Clayton city, MO.....	15,939
Bedford town, MA.....	13,320	Clearwater city, FL.....	107,685
Bellevue city, WA.....	122,363	Cleveland Heights city, OH.....	46,121
Bellingham city, WA.....	80,885	Clinton city, SC.....	8,490
Benbrook city, TX.....	21,234	Clive city, IA.....	15,447
Bend city, OR.....	76,639	Clovis city, CA.....	95,631
Bethlehem township, PA.....	23,730	College Park city, MD.....	30,413
Bettendorf city, IA.....	33,217	College Station city, TX.....	93,857
Billings city, MT.....	104,170	Colleyville city, TX.....	22,807
Blaine city, MN.....	57,186	Columbia city, MO.....	108,500
Bloomfield Hills city, MI.....	3,869	Columbia city, SC.....	129,272
Bloomington city, IN.....	80,405	Columbia Falls city, MT.....	4,688
Bloomington city, MN.....	82,893	Commerce City city, CO.....	45,913
Blue Springs city, MO.....	52,575	Concord city, CA.....	122,067
Boise City city, ID.....	205,671	Concord town, MA.....	17,668
Bonner Springs city, KS.....	7,314	Conshohocken borough, PA.....	7,833
Boone County, KY.....	118,811	Coolidge city, AZ.....	11,825
Boulder city, CO.....	97,385	Coon Rapids city, MN.....	61,476
Bowling Green city, KY.....	58,067	Copperas Cove city, TX.....	32,032
Bozeman city, MT.....	37,280	Coral Springs city, FL.....	121,096
Brentwood city, MO.....	8,055	Coronado city, CA.....	18,912
Brentwood city, TN.....	37,060	Corvallis city, OR.....	54,462
Brighton city, CO.....	33,352	Cottonwood Heights city, UT.....	33,433
Brighton city, MI.....	7,444	Creve Coeur city, MO.....	17,833
Bristol city, TN.....	26,702	Cross Roads town, TX.....	1,563
Broken Arrow city, OK.....	98,850	Cupertino city, CA.....	58,302
Brookfield city, WI.....	37,920	Dacono city, CO.....	4,152
Brookline CDP, MA.....	58,732	Dade City city, FL.....	6,437
Brooklyn Center city, MN.....	30,104	Dakota County, MN.....	398,552
Brooklyn city, OH.....	11,169	Dallas city, OR.....	14,583
Broomfield city, CO.....	55,889	Dallas city, TX.....	1,197,816
Brownsburg town, IN.....	21,285	Danville city, KY.....	16,218
Buffalo Grove village, IL.....	41,496	Dardenne Prairie city, MO.....	11,494
Burien city, WA.....	33,313	Darien city, IL.....	22,086
Burleson city, TX.....	36,690	Davenport city, FL.....	2,888
Burlingame city, CA.....	28,806	Davenport city, IA.....	99,685
Cabarrus County, NC.....	178,011	Davidson town, NC.....	10,944
Cambridge city, MA.....	105,162	Dayton city, OH.....	141,527
Cannon Beach city, OR.....	1,690	Dayton town, WY.....	757
Cañon City city, CO.....	16,400	Dearborn city, MI.....	98,153
Canton city, SD.....	3,057	Decatur city, GA.....	19,335
Cape Coral city, FL.....	154,305	Del Mar city, CA.....	4,161
Cape Girardeau city, MO.....	37,941	DeLand city, FL.....	27,031
Carlisle borough, PA.....	18,682	Delaware city, OH.....	34,753
Carlsbad city, CA.....	105,328	Delray Beach city, FL.....	60,522
Carroll city, IA.....	10,103	Denison city, TX.....	22,682
Cartersville city, GA.....	19,731	Denton city, TX.....	113,383
Cary town, NC.....	135,234	Denver city, CO.....	600,158
Castine town, ME.....	1,366	Derby city, KS.....	22,158
Castle Pines North city, CO.....	10,360	Des Moines city, IA.....	203,433
Castle Rock town, CO.....	48,231	Des Peres city, MO.....	8,373
Cedar Hill city, TX.....	45,028	Destin city, FL.....	12,305
Cedar Rapids city, IA.....	126,326	Dothan city, AL.....	65,496
Celina city, TX.....	6,028	Douglas County, CO.....	285,465
Centennial city, CO.....	100,377	Dover city, NH.....	29,987
Chandler city, AZ.....	236,123	Dublin city, CA.....	46,036
Chandler city, TX.....	2,734	Dublin city, OH.....	41,751
Chanhassen city, MN.....	22,952	Duluth city, MN.....	86,265
Chapel Hill town, NC.....	57,233	Durham city, NC.....	228,330
Chardon city, OH.....	5,148	Durham County, NC.....	267,587
Charles County, MD.....	146,551	Dyer town, IN.....	16,390
Charlotte city, NC.....	731,424	Eagan city, MN.....	64,206
Charlotte County, FL.....	159,978	Eagle Mountain city, UT.....	21,415

The National Citizen Survey™

Eagle town, CO	6,508	Hamilton town, MA	7,764
East Grand Forks city, MN	8,601	Hampton city, VA	137,436
East Lansing city, MI	48,579	Hanover County, VA	99,863
Eau Claire city, WI	65,883	Harrisburg city, SD	4,089
Eden Prairie city, MN	60,797	Harrisonburg city, VA	48,914
Eden town, VT	1,323	Harrisonville city, MO	10,019
Edgerton city, KS	1,671	Hastings city, MN	22,172
Edgewater city, CO	5,170	Hayward city, CA	144,186
Edina city, MN	47,941	Henderson city, NV	257,729
Edmond city, OK	81,405	Herndon town, VA	23,292
Edmonds city, WA	39,709	High Point city, NC	104,371
El Cerrito city, CA	23,549	Highland Park city, IL	29,763
El Dorado County, CA	181,058	Highlands Ranch CDP, CO	96,713
El Paso de Robles (Paso Robles) city, CA	29,793	Holland city, MI	33,051
Elk Grove city, CA	153,015	Homer Glen village, IL	24,220
Elko New Market city, MN	4,110	Honolulu County, HI	953,207
Elmhurst city, IL	44,121	Hooksett town, NH	13,451
Encinitas city, CA	59,518	Hopkins city, MN	17,591
Englewood city, CO	30,255	Hopkinton town, MA	14,925
Erie town, CO	18,135	Hoquiam city, WA	8,726
Escambia County, FL	297,619	Horry County, SC	269,291
Estes Park town, CO	5,858	Howard village, WI	17,399
Euclid city, OH	48,920	Hudson city, OH	22,262
Fairview town, TX	7,248	Hudson town, CO	2,356
Farmers Branch city, TX	28,616	Huntley village, IL	24,291
Farmersville city, TX	3,301	Hurst city, TX	37,337
Farmington Hills city, MI	79,740	Hutchinson city, MN	14,178
Farmington town, CT	25,340	Hutto city, TX	14,698
Fayetteville city, NC	200,564	Independence city, MO	116,830
Fernandina Beach city, FL	11,487	Indianola city, IA	14,782
Fishers town, IN	76,794	Indio city, CA	76,036
Flagstaff city, AZ	65,870	Iowa City city, IA	67,862
Flower Mound town, TX	64,669	Irving city, TX	216,290
Forest Grove city, OR	21,083	Issaquah city, WA	30,434
Fort Collins city, CO	143,986	Jackson city, MO	13,758
Fort Lauderdale city, FL	165,521	Jackson County, MI	160,248
Fort Smith city, AR	86,209	James City County, VA	67,009
Franklin city, TN	62,487	Jefferson County, NY	116,229
Fremont city, CA	214,089	Jefferson Parish, LA	432,552
Friendswood city, TX	35,805	Johnson City city, TN	63,152
Fruita city, CO	12,646	Johnston city, IA	17,278
Gahanna city, OH	33,248	Jupiter town, FL	55,156
Gaithersburg city, MD	59,933	Kalamazoo city, MI	74,262
Galveston city, TX	47,743	Kansas City city, KS	145,786
Gardner city, KS	19,123	Kansas City city, MO	459,787
Georgetown city, TX	47,400	Keizer city, OR	36,478
Germantown city, TN	38,844	Kenmore city, WA	20,460
Gilbert town, AZ	208,453	Kennedale city, TX	6,763
Gillette city, WY	29,087	Kennett Square borough, PA	6,072
Glen Ellyn village, IL	27,450	Kent city, WA	92,411
Glendora city, CA	50,073	Kerrville city, TX	22,347
Glenview village, IL	44,692	Kettering city, OH	56,163
Globe city, AZ	7,532	Key West city, FL	24,649
Golden city, CO	18,867	King City city, CA	12,874
Golden Valley city, MN	20,371	King County, WA	1,931,249
Goodyear city, AZ	65,275	Kirkland city, WA	48,787
Grafton village, WI	11,459	Kirkwood city, MO	27,540
Grand Blanc city, MI	8,276	Knoxville city, IA	7,313
Grants Pass city, OR	34,533	La Plata town, MD	8,753
Grass Valley city, CA	12,860	La Porte city, TX	33,800
Greeley city, CO	92,889	La Vista city, NE	15,758
Greenville city, NC	84,554	Lafayette city, CO	24,453
Greenwich town, CT	61,171	Laguna Beach city, CA	22,723
Greenwood Village city, CO	13,925	Laguna Niguel city, CA	62,979
Greer city, SC	25,515	Lake Forest city, IL	19,375
Gunnison County, CO	15,324	Lake in the Hills village, IL	28,965
Hailey city, ID	7,960	Lake Stevens city, WA	28,069
Haines Borough, AK	2,508	Lake Worth city, FL	34,910
Haltom City city, TX	42,409	Lake Zurich village, IL	19,631
Hamilton city, OH	62,477	Lakeville city, MN	55,954

The National Citizen Survey™

Lakewood city, CO	142,980	Minnetrista city, MN	6,384
Lakewood city, WA	58,163	Missouri City city, TX	67,358
Lancaster County, SC	76,652	Modesto city, CA	201,165
Lane County, OR	351,715	Monterey city, CA	27,810
Lansing city, MI	114,297	Montgomery city, MN	2,956
Laramie city, WY	30,816	Montgomery County, MD	971,777
Larimer County, CO	299,630	Monticello city, UT	1,972
Las Cruces city, NM	97,618	Montrose city, CO	19,132
Las Vegas city, NM	13,753	Monument town, CO	5,530
Las Vegas city, NV	583,756	Mooreville town, NC	32,711
Lawrence city, KS	87,643	Moraga town, CA	16,016
Lawrenceville city, GA	28,546	Morristown city, TN	29,137
Lee's Summit city, MO	91,364	Morrisville town, NC	18,576
Lehi city, UT	47,407	Morro Bay city, CA	10,234
Lenexa city, KS	48,190	Mountain Village town, CO	1,320
Lewis County, NY	27,087	Mountlake Terrace city, WA	19,909
Lewiston city, ID	31,894	Murphy city, TX	17,708
Lewisville city, TX	95,290	Naperville city, IL	141,853
Lewisville town, NC	12,639	Napoleon city, OH	8,749
Libertyville village, IL	20,315	Nederland city, TX	17,547
Lincoln city, NE	258,379	Needham CDP, MA	28,886
Lincolnwood village, IL	12,590	Nevada City city, CA	3,068
Lindsborg city, KS	3,458	Nevada County, CA	98,764
Little Chute village, WI	10,449	New Braunfels city, TX	57,740
Littleton city, CO	41,737	New Brighton city, MN	21,456
Livermore city, CA	80,968	New Hanover County, NC	202,667
Lombard village, IL	43,165	New Hope city, MN	20,339
Lone Tree city, CO	10,218	New Orleans city, LA	343,829
Long Grove village, IL	8,043	New Port Richey city, FL	14,911
Longmont city, CO	86,270	New Smyrna Beach city, FL	22,464
Longview city, TX	80,455	New Ulm city, MN	13,522
Lonsdale city, MN	3,674	Newberg city, OR	22,068
Los Alamos County, NM	17,950	Newport city, RI	24,672
Los Altos Hills town, CA	7,922	Newport News city, VA	180,719
Louisville city, CO	18,376	Newton city, IA	15,254
Lower Merion township, PA	57,825	Noblesville city, IN	51,969
Lynchburg city, VA	75,568	Nogales city, AZ	20,837
Lynnwood city, WA	35,836	Norcross city, GA	9,116
Macomb County, MI	840,978	Norfolk city, NE	24,210
Manassas city, VA	37,821	Norfolk city, VA	242,803
Manhattan Beach city, CA	35,135	North Mankato city, MN	13,394
Manhattan city, KS	52,281	North Port city, FL	57,357
Mankato city, MN	39,309	North Richland Hills city, TX	63,343
Maple Grove city, MN	61,567	North Yarmouth town, ME	3,565
Maplewood city, MN	38,018	Novato city, CA	51,904
Maricopa County, AZ	3,817,117	Novi city, MI	55,224
Marion city, IA	34,768	O'Fallon city, IL	28,281
Mariposa County, CA	18,251	O'Fallon city, MO	79,329
Marshfield city, WI	19,118	Oak Park village, IL	51,878
Martinez city, CA	35,824	Oakland city, CA	390,724
Marysville city, WA	60,020	Oakley city, CA	35,432
Matthews town, NC	27,198	Oklahoma City city, OK	579,999
McAllen city, TX	129,877	Olathe city, KS	125,872
McKinney city, TX	131,117	Old Town city, ME	7,840
McMinnville city, OR	32,187	Olmsted County, MN	144,248
Menlo Park city, CA	32,026	Olympia city, WA	46,478
Menomonee Falls village, WI	35,626	Orange village, OH	3,323
Mercer Island city, WA	22,699	Orland Park village, IL	56,767
Meridian charter township, MI	39,688	Orleans Parish, LA	343,829
Meridian city, ID	75,092	Oshkosh city, WI	66,083
Merriam city, KS	11,003	Oshkosh charter township, MI	21,705
Mesa city, AZ	439,041	Oswego village, IL	30,355
Mesa County, CO	146,723	Otsego County, MI	24,164
Miami Beach city, FL	87,779	Ottawa County, MI	263,801
Miami city, FL	399,457	Overland Park city, KS	173,372
Middleton city, WI	17,442	Paducah city, KY	25,024
Midland city, MI	41,863	Palm Beach Gardens city, FL	48,452
Milford city, DE	9,559	Palm Coast city, FL	75,180
Milton city, GA	32,661	Palo Alto city, CA	64,403
Minneapolis city, MN	382,578	Palos Verdes Estates city, CA	13,438

The National Citizen Survey™

Papillion city, NE	18,894	San Anselmo town, CA	12,336
Paradise Valley town, AZ	12,820	San Diego city, CA	1,307,402
Park City city, UT	7,558	San Francisco city, CA	805,235
Parker town, CO	45,297	San Jose city, CA	945,942
Parkland city, FL	23,962	San Juan County, NM	130,044
Pasco city, WA	59,781	San Marcos city, CA	83,781
Pasco County, FL	464,697	San Marcos city, TX	44,894
Payette city, ID	7,433	San Rafael city, CA	57,713
Pearland city, TX	91,252	Sanford city, FL	53,570
Peoria city, AZ	154,065	Sangamon County, IL	197,465
Peoria city, IL	115,007	Santa Clarita city, CA	176,320
Pflugerville city, TX	46,936	Santa Fe city, NM	67,947
Phoenix city, AZ	1,445,632	Santa Fe County, NM	144,170
Pinehurst village, NC	13,124	Santa Monica city, CA	89,736
Piqua city, OH	20,522	Sarasota County, FL	379,448
Pitkin County, CO	17,148	Savage city, MN	26,911
Plano city, TX	259,841	Schaumburg village, IL	74,227
Platte City city, MO	4,691	Schertz city, TX	31,465
Pleasant Hill city, IA	8,785	Scott County, MN	129,928
Pleasanton city, CA	70,285	Scottsdale city, AZ	217,385
Plymouth city, MN	70,576	Seaside city, CA	33,025
Polk County, IA	430,640	Sedona city, AZ	10,031
Pompano Beach city, FL	99,845	Sevierville city, TN	14,807
Port Orange city, FL	56,048	Shakopee city, MN	37,076
Port St. Lucie city, FL	164,603	Sharonville city, OH	13,560
Portland city, OR	583,776	Shawnee city, KS	62,209
Post Falls city, ID	27,574	Shawnee city, OK	29,857
Powell city, OH	11,500	Sherborn town, MA	4,119
Prince William County, VA	402,002	Shoreline city, WA	53,007
Prior Lake city, MN	22,796	Shoreview city, MN	25,043
Pueblo city, CO	106,595	Shorewood village, IL	15,615
Purcellville town, VA	7,727	Shorewood village, WI	13,162
Queen Creek town, AZ	26,361	Sierra Vista city, AZ	43,888
Raleigh city, NC	403,892	Silverton city, OR	9,222
Ramsey city, MN	23,668	Sioux Center city, IA	7,048
Raymond town, ME	4,436	Sioux Falls city, SD	153,888
Raymore city, MO	19,206	Skokie village, IL	64,784
Redmond city, OR	26,215	Snellville city, GA	18,242
Redmond city, WA	54,144	Snoqualmie city, WA	10,670
Redwood City city, CA	76,815	Snowmass Village town, CO	2,826
Reno city, NV	225,221	Somerset town, MA	18,165
Reston CDP, VA	58,404	South Jordan city, UT	50,418
Richland city, VA	48,058	South Lake Tahoe city, CA	21,403
Richmond city, CA	103,701	Southlake city, TX	26,575
Richmond Heights city, MO	8,603	Spearfish city, SD	10,494
Rio Rancho city, NM	87,521	Spring Hill city, KS	5,437
River Falls city, WI	15,000	Springboro city, OH	17,409
Riverside city, CA	303,871	Springfield city, MO	159,498
Riverside city, MO	2,937	Springville city, UT	29,466
Roanoke city, VA	97,032	St. Augustine city, FL	12,975
Roanoke County, VA	92,376	St. Charles city, IL	32,974
Rochester Hills city, MI	70,995	St. Cloud city, FL	35,183
Rock Hill city, SC	66,154	St. Cloud city, MN	65,842
Rockville city, MD	61,209	St. Joseph city, MO	76,780
Roeland Park city, KS	6,731	St. Joseph town, WI	3,842
Rogers city, MN	8,597	St. Louis County, MN	200,226
Rohnert Park city, CA	40,971	State College borough, PA	42,034
Rolla city, MO	19,559	Steamboat Springs city, CO	12,088
Roselle village, IL	22,763	Sterling Heights city, MI	129,699
Rosemount city, MN	21,874	Sugar Grove village, IL	8,997
Rosenberg city, TX	30,618	Sugar Land city, TX	78,817
Roseville city, MN	33,660	Suisun City city, CA	28,111
Round Rock city, TX	99,887	Summit city, NJ	21,457
Royal Oak city, MI	57,236	Summit County, UT	36,324
Royal Palm Beach village, FL	34,140	Summit village, IL	11,054
Saco city, ME	18,482	Sunnyvale city, CA	140,081
Sacramento city, CA	466,488	Surprise city, AZ	117,517
Sahuarita town, AZ	25,259	Suwanee city, GA	15,355
Salida city, CO	5,236	Tacoma city, WA	198,397
Sammamish city, WA	45,780	Takoma Park city, MD	16,715

The National Citizen Survey™

Tamarac city, FL	60,427	Wauwatosa city, WI	46,396
Temecula city, CA	100,097	Waverly city, IA	9,874
Tempe city, AZ	161,719	Weddington town, NC	9,459
Temple city, TX	66,102	Wentzville city, MO	29,070
Texarkana city, TX	36,411	West Carrollton city, OH	13,143
The Woodlands CDP, TX	93,847	West Chester borough, PA	18,461
Thousand Oaks city, CA	126,683	West Des Moines city, IA	56,609
Tigard city, OR	48,035	Western Springs village, IL	12,975
Tracy city, CA	82,922	Westerville city, OH	36,120
Trinidad CCD, CO	12,017	Westlake town, TX	992
Tualatin city, OR	26,054	Westminster city, CO	106,114
Tulsa city, OK	391,906	Weston town, MA	11,261
Tustin city, CA	75,540	Wheat Ridge city, CO	30,166
Twin Falls city, ID	44,125	White House city, TN	10,255
Tyler city, TX	96,900	Wichita city, KS	382,368
Unalaska city, AK	4,376	Williamsburg city, VA	14,068
University Heights city, OH	13,539	Willowbrook village, IL	8,540
University Park city, TX	23,068	Wilmington city, NC	106,476
Upper Arlington city, OH	33,771	Wilsonville city, OR	19,509
Urbandale city, IA	39,463	Windsor town, CO	18,644
Vail town, CO	5,305	Windsor town, CT	29,044
Vancouver city, WA	161,791	Winnetka village, IL	12,187
Ventura CCD, CA	111,889	Winter Garden city, FL	34,568
Vernon Hills village, IL	25,113	Woodbury city, MN	61,961
Vestavia Hills city, AL	34,033	Woodinville city, WA	10,938
Victoria city, MN	7,345	Woodland city, CA	55,468
Vienna town, VA	15,687	Wrentham town, MA	10,955
Virginia Beach city, VA	437,994	Wyandotte County, KS	157,505
Walnut Creek city, CA	64,173	Yakima city, WA	91,067
Warrensburg city, MO	18,838	York County, VA	65,464
Washington County, MN	238,136	Yorktown town, IN	9,405
Washington town, NH	1,123	Yorkville city, IL	16,921
Washoe County, NV	421,407	Yountville city, CA	2,933
Washougal city, WA	14,095		

Appendix C: Detailed Survey Methods

The National Citizen Survey (The NCS™), conducted by National Research Center, Inc., was developed to provide communities an accurate, affordable and easy way to assess and interpret resident opinion about important local topics. Standardization of common questions and survey methods provide the rigor to assure valid results, and each community has enough flexibility to construct a customized version of The NCS.

Results offer insight into residents' perspectives about the community as a whole, including local amenities, services, public trust, resident participation and other aspects of the community in order to support budgeting, land use and strategic planning and communication with residents. Resident demographic characteristics permit comparison to the Census as well as comparison of results for different subgroups of residents. The Athens-Clarke County funded this research. Please contact Jestin Johnson, Assistant County Manager of Athens-Clarke County at Jestin.Johnson@athensclarkecounty.com if you have any questions about the survey.

Survey Validity

The question of survey validity has two parts: 1) how can a community be confident that the results from those who completed the questionnaire are representative of the results that would have been obtained had the survey been administered to the entire population? and 2) how closely do the perspectives recorded on the survey reflect what residents really believe or do?

To answer the first question, the best survey research practices were used for the resources spent to ensure that the results from the survey respondents reflect the opinions of residents in the entire community. These practices include:

- Using a mail-out/mail-back methodology, which typically gets a higher response rate than phone for the same dollars spent. A higher response rate lessens the worry that those who did not respond are different than those who did respond.
- Selecting households at random within the community to receive the survey to ensure that the households selected to receive the survey are representative of the larger community.
- Over-sampling multi-family housing units to improve response from hard-to-reach, lower income or younger apartment dwellers.
- Selecting the respondent within the household using an unbiased sampling procedure; in this case, the "birthday method." The cover letter included an instruction requesting that the respondent in the household be the adult (18 years old or older) who most recently had a birthday, irrespective of year of birth.
- Contacting potential respondents three times to encourage response from people who may have different opinions or habits than those who would respond with only a single prompt.
- Inviting response in a compelling manner (using appropriate letterhead/logos and a signature of a visible leader) to appeal to recipients' sense of civic responsibility.
- Providing a pre-addressed, postage-paid return envelope.
- Offering the survey in Spanish or other language when requested by a given community.
- Weighting the results to reflect the demographics of the population.

The answer to the second question about how closely the perspectives recorded on the survey reflect what residents really believe or do is more complex. Resident responses to surveys are influenced by a variety of factors. For questions about service quality, residents' expectations for service quality play a role as well as the "objective" quality of the service provided, the way the resident perceives the entire community (that is, the context in which the service is provided), the scale on which the resident is asked to record his or her opinion and, of course, the opinion, itself, that a resident holds about the service. Similarly a resident's report of certain behaviors is colored by what he or she believes is the socially desirable response (e.g., reporting tolerant behaviors toward "oppressed groups," likelihood of voting for a tax increase for services to poor people, use of alternative modes of travel to work besides the single occupancy vehicle), his or her memory of the actual behavior (if it is not a question speculating about future actions, like a vote), his or her confidence that he or she can be honest without suffering any negative consequences (thus the need for anonymity) as well as the actual behavior itself.

How closely survey results come to recording the way a person really feels or behaves often is measured by the coincidence of reported behavior with observed current behavior (e.g., driving habits), reported intentions to behave with observed future behavior (e.g., voting choices) or reported opinions about current community quality

with objective characteristics of the community (e.g., feelings of safety correlated with rates of crime). There is a body of scientific literature that has investigated the relationship between reported behaviors and actual behaviors. Well-conducted surveys, by and large, do capture true respondent behaviors or intentions to act with great accuracy. Predictions of voting outcomes tend to be quite accurate using survey research, as do reported behaviors that are not about highly sensitive issues (e.g., family abuse or other illegal or morally sanctioned activities). For self-reports about highly sensitive issues, statistical adjustments can be made to correct for the respondents' tendency to report what they think the "correct" response should be.

Research on the correlation of resident opinion about service quality and "objective" ratings of service quality vary, with some showing stronger relationships than others. NRC's own research has demonstrated that residents who report the lowest ratings of street repair live in communities with objectively worse street conditions than those who report high ratings of street repair (based on road quality, delay in street repair, number of road repair employees). Similarly, the lowest rated fire services appear to be "objectively" worse than the highest rated fire services (expenditures per capita, response time, "professional" status of firefighters, breadth of services and training provided). Resident opinion commonly reflects objective performance data but is an important measure on its own. NRC principals have written, "If you collect trash three times a day but residents think that your trash haul is lousy, you still have a problem."

Selecting Survey Recipients

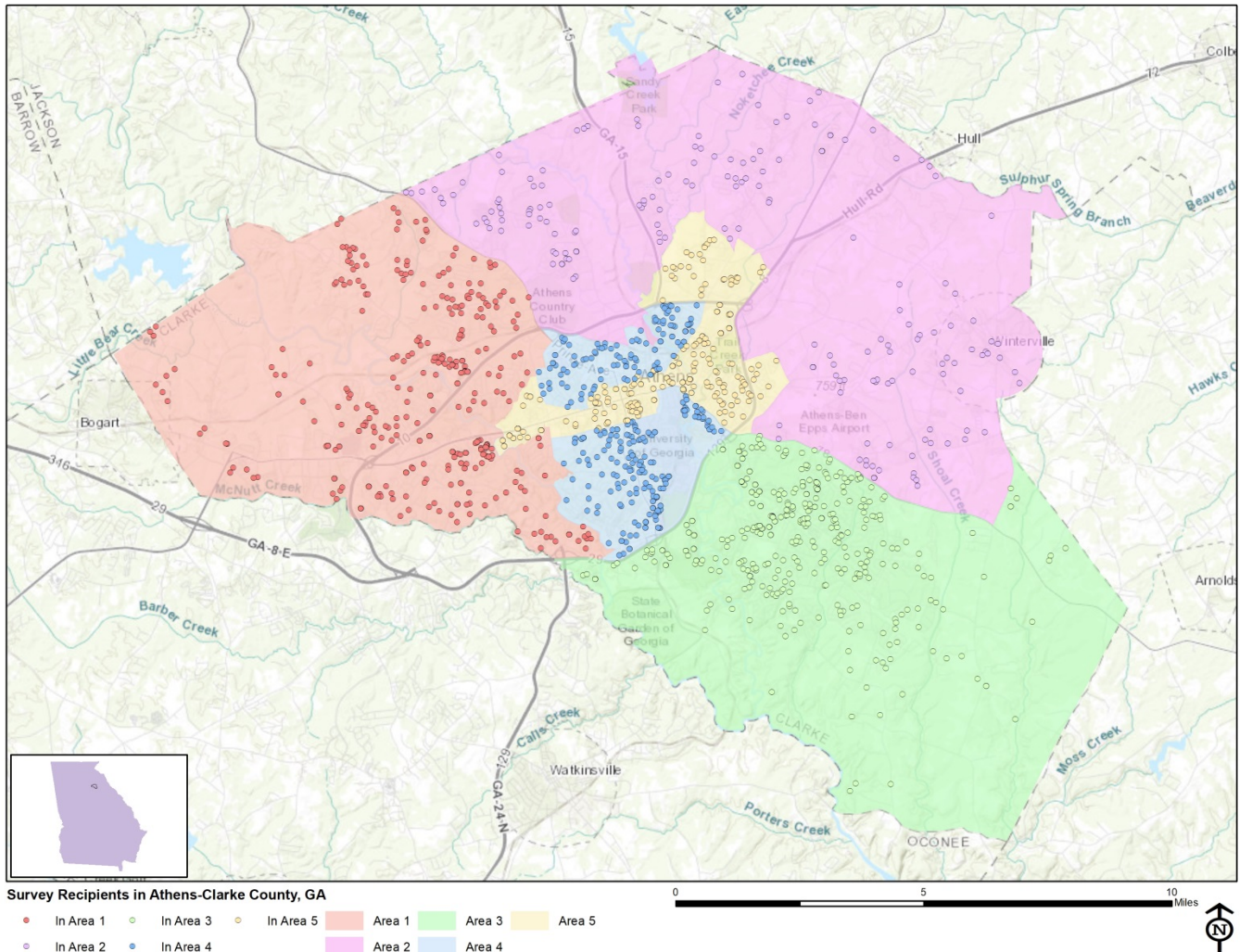
"Sampling" refers to the method by which households were chosen to receive the survey. All households within Athens-Clarke County were eligible to participate in the survey. A list of all households within the zip codes serving Athens-Clarke County was purchased from Go-Dog Direct based on updated listings from the United States Postal Service. Since some of the zip codes that serve Athens-Clarke County households may also serve addresses that lie outside of the community, the exact geographic location of each housing unit was compared to community boundaries using the most current municipal boundary file (updated on a quarterly basis) and addresses located outside of Athens-Clarke County boundaries were removed from consideration. Each address identified as being within County boundaries was further identified as being within one of the five geographic subareas.

To choose the 1,800 survey recipients, a systematic sampling method was applied to the list of households previously screened for geographic location. Systematic sampling is a procedure whereby a complete list of all possible households is culled, selecting every *Nth* one, giving each eligible household a known probability of selection, until the appropriate number of households is selected. Multi-family housing units were selected at a higher rate as residents of this type of housing typically respond at lower rates to surveys than do those in single-family housing units. Figure 1 displays a map of the households selected to receive the survey. In general, because of the random sampling techniques used, the displayed sampling density will closely mirror the overall housing unit density (which may be different from the population density). While the theory of probability assumes no bias in selection, there may be some minor variations in practice (meaning, an area with only 15% of the housing units might be selected at an actual rate that is slightly above or below that).

An individual within each household was selected using the birthday method. The birthday method selects a person within the household by asking the "person whose birthday has most recently passed" to complete the questionnaire. The underlying assumption in this method is that day of birth has no relationship to the way people respond to surveys. This instruction was contained in the cover letter accompanying the questionnaire.

In addition to the scientific, random selection of households, a link to an online "opt-in" survey was publicized and posted to the Athens-Clarke County website. This opt-in survey was identical to the scientific survey and open to all County residents. (The data presented in this report exclude the opt-in survey data. These data can be found in the *Supplemental Online Survey Results* provided under separate cover.)

Figure 1: Location of Survey Recipients



Survey Administration and Response

Selected households received three mailings, one week apart, beginning on April 16, 2018. The first mailing was a prenotification postcard announcing the upcoming survey. The next mailing contained a letter from the Mayor inviting the household to participate, a questionnaire and a postage-paid return envelope. The final mailing contained a reminder letter, another survey and a postage-paid return envelope. The second cover letter asked those who had not completed the survey to do so and those who had already done so to refrain from turning in another survey. The survey was available in English. Respondents could also opt to take the survey online if they preferred. Athens-Clarke County chose to augment their administration of The NCS with several additional services, including geographic and demographic subgroup comparisons. The results of these additional services have been provided under separate cover. Completed surveys were collected over the following seven weeks. The online “opt-in” survey became available to all residents on May 21, 2018 and remained open for two weeks.

About 3% of the 1,800 surveys mailed were returned because the housing unit was vacant or the postal service was unable to deliver the survey as addressed. Of the remaining 1,750 households that received the survey, 251 completed the survey, providing an overall response rate of 14%. Of the 251 completed surveys, 33 were completed online. Additionally, responses were tracked by subarea; response rates by area ranged from 7% to 18%. The response rates were calculated using AAPOR’s response rate #2¹ for mailed surveys of unnamed persons. Additionally, 184 residents completed the online opt-in survey; results of the opt-in survey can be found in the *Supplemental Online Survey Results* report provided under separate cover.

¹ See AAPOR’s Standard Definitions here: [http://www.aapor.org/Standards-Ethics/Standard-Definitions-\(1\).aspx](http://www.aapor.org/Standards-Ethics/Standard-Definitions-(1).aspx) for more information

Table 79: Survey Response Rates by Area

	Area 1	Area2	Area 3	Area 4	Area 5	Overall
Total sample used	432	208	487	377	296	1,800
I=Complete Interviews	69	30	83	46	20	248
P=Partial Interviews	0	1	1	1	0	3
R=Refusal and break off	0	0	0	0	0	0
NC=Non Contact	0	0	0	0	0	0
O=Other	0	0	0	0	0	0
UH=Unknown household	0	0	0	0	0	0
UO=Unknown other	353	173	390	319	264	1,499
Response rate: (I+P)/(I+P) + (R+NC+O) + (UH+UO)	16%	15%	18%	13%	7%	14%

Confidence Intervals

It is customary to describe the precision of estimates made from surveys by a “level of confidence” and accompanying “confidence interval” (or margin of error). A traditional level of confidence, and the one used here, is 95%. The 95% confidence interval can be any size and quantifies the sampling error or imprecision of the survey results because some residents’ opinions are relied on to estimate all residents’ opinions.²

The margin of error for the Athens-Clarke County survey is no greater than plus or minus six percentage points around any given percent reported for all respondents (251 completed surveys).

For subgroups of responses, the margin of error increases because the number of respondents for the subgroup is smaller. For subgroups of approximately 100 respondents, the margin of error is plus or minus 10 percentage points.

Survey Processing (Data Entry)

Upon receipt, completed surveys were assigned a unique identification number. Additionally, each survey was reviewed and “cleaned” as necessary. For example, a question may have asked a respondent to pick two items out of a list of five, but the respondent checked three; in this case, NRC would use protocols to randomly choose two of the three selected items for inclusion in the dataset.

All surveys then were entered twice into an electronic dataset; any discrepancies were resolved in comparison to the original survey form. Range checks as well as other forms of quality control were also performed.

NRC used SurveyGizmo, a web-based survey and analytics platform, to collect the online survey data. Use of an online system means all collected data are entered into the dataset when the respondents submit the surveys. Skip patterns are programmed into system so respondents are automatically “skipped” to the appropriate question based on the individual responses being given. Online programming also allows for more rigid control of the data format, making extensive data cleaning unnecessary.

A series of quality control checks were also performed in order to ensure the integrity of the web data. Steps may include and not be limited to reviewing the data for clusters of repeat IP addresses and time stamps (indicating duplicate responses) and removing empty submissions (questionnaires submitted with no questions answered).

Survey Data Weighting

Upon completion of data collection for both the scientific (probability) and nonscientific open participation online opt-in (non-probability) surveys, NRC compared the data to determine whether it was appropriate to combine, or blend, both datasets together. In the case of Athens-Clarke County, characteristics of respondents to the non-probability survey were dissimilar enough in both respondent trait and opinion to indicate the datasets should not be blended. Results for the opt-in survey have been provided under separate cover.

² A 95% confidence interval indicates that for every 100 random samples of this many residents, 95 of the confidence intervals created will include the “true” population response. This theory is applied in practice to mean that the “true” perspective of the target population lies within the confidence interval created for a single survey. For example, if 75% of residents rate a service as “excellent” or “good,” then the 4% margin of error (for the 95% confidence interval) indicates that the range of likely responses for the entire community is between 71% and 79%. This source of uncertainty is called sampling error. In addition to sampling error, other sources of error may affect any survey, including the non-response of residents with opinions different from survey responders. Though standardized on The NCS, on other surveys, differences in question wording, order, translation and data entry, as examples, can lead to somewhat varying results.

The demographic characteristics of the survey respondents were compared to those found in the 2010 Census and American Community Survey estimates for adults in Athens-Clarke County. The primary objective of weighting survey data is to make the survey respondents reflective of the larger population of the community. The characteristics used for weighting were housing tenure (rent or own), housing unit type (attached or detached), race, ethnicity and sex and age. No adjustments were made for design effects. The results of the weighting scheme are presented in the following table.

Table 80: Athens-Clarke County, GA 2018 Weighting Table

Characteristic	2010 Census	Unweighted Data	Weighted Data
Housing			
Rent home	58%	36%	55%
Own home	42%	64%	45%
Detached unit*	56%	63%	57%
Attached unit*	44%	37%	43%
Race and Ethnicity			
White	66%	76%	68%
Not white	34%	24%	32%
Not Hispanic	91%	98%	92%
Hispanic	9%	2%	8%
Sex and Age			
Female	53%	62%	54%
Male	47%	38%	46%
18-34 years of age	54%	23%	51%
35-54 years of age	25%	23%	25%
55+ years of age	21%	53%	24%
Females 18-34	28%	14%	28%
Females 35-54	13%	17%	13%
Females 55+	12%	31%	13%
Males 18-34	26%	9%	23%
Males 35-54	12%	7%	13%
Males 55+	9%	23%	10%
Area			
Area 1	23%	27%	21%
Area 2	14%	12%	12%
Area 3	27%	33%	32%
Area 4	20%	19%	21%
Area 5	16%	8%	13%

* U.S. Census Bureau, 2011-2015 American Community Survey 5-Year Estimates

Survey Data Analysis and Reporting

The survey dataset was analyzed using the Statistical Package for the Social Sciences (SPSS). For the most part, the percentages presented in the reports represent the “percent positive.” The percent positive is the combination of the top two most positive response options (i.e., “excellent” and “good,” “very safe” and “somewhat safe,” “essential” and “very important,” etc.), or, in the case of resident behaviors/participation, the percent positive represents the proportion of respondents indicating “yes” or participating in an activity at least once a month.

On many of the questions in the survey respondents may answer “don’t know.” The proportion of respondents giving this reply is shown in the full set of responses included in Appendix A. However, these responses have been removed from the analyses presented in the reports. In other words, the tables and graphs display the responses from respondents who had an opinion about a specific item. When a table for a question that only permitted a single response does not total to exactly 100%, it is due to the common practice of percentages being rounded to the nearest whole number.

The data for the opt-in survey are presented separately in the report titled *Supplemental Online Survey Results*.

Appendix D: Survey Materials

Dear Athens-Clarke County Resident,

It won't take much of your time to make a big difference!

Your household has been randomly selected to participate in a survey about your community. Your survey will arrive in a few days.

Thank you for helping create a better County!

Sincerely,

A handwritten signature in blue ink, appearing to read "Nancy B. Denson".

Nancy B. Denson
Mayor

Dear Athens-Clarke County Resident,

It won't take much of your time to make a big difference!

Your household has been randomly selected to participate in a survey about your community. Your survey will arrive in a few days.

Thank you for helping create a better County!

Sincerely,

A handwritten signature in blue ink, appearing to read "Nancy B. Denson".

Nancy B. Denson
Mayor

Dear Athens-Clarke County Resident,

It won't take much of your time to make a big difference!

Your household has been randomly selected to participate in a survey about your community. Your survey will arrive in a few days.

Thank you for helping create a better County!

Sincerely,

A handwritten signature in blue ink, appearing to read "Nancy B. Denson".

Nancy B. Denson
Mayor

Dear Athens-Clarke County Resident,

It won't take much of your time to make a big difference!

Your household has been randomly selected to participate in a survey about your community. Your survey will arrive in a few days.

Thank you for helping create a better County!

Sincerely,

A handwritten signature in blue ink, appearing to read "Nancy B. Denson".

Nancy B. Denson
Mayor



301 College Avenue, Suite 300
Athens, GA 30601

Presorted
First Class Mail
US Postage
PAID
Boulder, CO
Permit NO. 94



301 College Avenue, Suite 300
Athens, GA 30601

Presorted
First Class Mail
US Postage
PAID
Boulder, CO
Permit NO. 94



301 College Avenue, Suite 300
Athens, GA 30601

Presorted
First Class Mail
US Postage
PAID
Boulder, CO
Permit NO. 94



301 College Avenue, Suite 300
Athens, GA 30601

Presorted
First Class Mail
US Postage
PAID
Boulder, CO
Permit NO. 94



301 College Avenue, Suite 300
Athens, GA 30601

Presorted
First Class Mail
US Postage
PAID
Boulder, CO
Permit NO.94



April 2018

Dear Athens-Clarke County Resident:

Please help us shape the future of Athens-Clarke County! You have been selected at random to participate in the 2018 Athens-Clarke County Citizen Survey.

Please take a few minutes to fill out the enclosed survey. Your participation in this survey is very important – especially since your household is one of only a small number of households being surveyed. Your feedback will help Athens-Clarke County make decisions that affect our County.

A few things to remember:

- **Your responses are completely anonymous.**
- **You may return the survey by mail in the enclosed postage-paid envelope, or you can complete the survey online at:**

<http://bit.ly/accounty2018>

If you have any questions about the survey please call 706-613-3020.

Thank you for your time and participation!

Sincerely,

A handwritten signature in blue ink, reading 'Nancy B. Denson'.

Nancy B. Denson
Mayor



May 2018

Dear Athens-Clarke County Resident:

Here's a second chance if you haven't already responded to the 2018 Athens-Clarke County Citizen Survey! **(If you completed it and sent it back, we thank you for your time and ask you to recycle this survey. Please do not respond twice.)**

Please help us shape the future of Athens-Clarke County! You have been selected at random to participate in the 2018 Athens-Clarke County Citizen Survey.

Please take a few minutes to fill out the enclosed survey. Your participation in this survey is very important – especially since your household is one of only a small number of households being surveyed. Your feedback will help Athens-Clarke County make decisions that affect our County.

A few things to remember:

- **Your responses are completely anonymous.**
- **You may return the survey by mail in the enclosed postage-paid envelope, or you can complete the survey online at:**

<http://bit.ly/accounty2018>

If you have any questions about the survey please call 706-613-3020.

Thank you for your time and participation!

Sincerely,

A handwritten signature in blue ink, appearing to read 'Nancy B. Denson'.

Nancy B. Denson
Mayor

Athens-Clarke County 2018 Citizen Survey

Please complete this questionnaire if you are an adult (age 18 or older) in the household. Please select the response (by circling the number or checking the box) that most closely represents your opinion for each question. Your responses are anonymous and will be reported in group form only.

1. Please rate each of the following aspects of quality of life in Athens-Clarke County:

	<i>Excellent</i>	<i>Good</i>	<i>Fair</i>	<i>Poor</i>	<i>Don't know</i>
Athens-Clarke County as a place to live	1	2	3	4	5
Your neighborhood as a place to live.....	1	2	3	4	5
Athens-Clarke County as a place to raise children	1	2	3	4	5
Athens-Clarke County as a place to work.....	1	2	3	4	5
Athens-Clarke County as a place to visit	1	2	3	4	5
Athens-Clarke County as a place to retire	1	2	3	4	5
The overall quality of life in Athens-Clarke County	1	2	3	4	5

2. Please rate each of the following characteristics as they relate to Athens-Clarke County as a whole:

	<i>Excellent</i>	<i>Good</i>	<i>Fair</i>	<i>Poor</i>	<i>Don't know</i>
Overall feeling of safety in Athens-Clarke County.....	1	2	3	4	5
Overall ease of getting to the places you usually have to visit.....	1	2	3	4	5
Quality of overall natural environment in Athens-Clarke County	1	2	3	4	5
Overall "built environment" of Athens-Clarke County (including overall design, buildings, parks and transportation systems)	1	2	3	4	5
Health and wellness opportunities in Athens-Clarke County	1	2	3	4	5
Overall opportunities for education and enrichment.....	1	2	3	4	5
Overall economic health of Athens-Clarke County	1	2	3	4	5
Sense of community.....	1	2	3	4	5
Overall image or reputation of Athens-Clarke County	1	2	3	4	5

3. Please indicate how likely or unlikely you are to do each of the following:

	<i>Very likely</i>	<i>Somewhat likely</i>	<i>Somewhat unlikely</i>	<i>Very unlikely</i>	<i>Don't know</i>
Recommend living in Athens-Clarke County to someone who asks	1	2	3	4	5
Remain in Athens-Clarke County for the next five years	1	2	3	4	5

4. Please rate how safe or unsafe you feel:

	<i>Very safe</i>	<i>Somewhat safe</i>	<i>Neither safe nor unsafe</i>	<i>Somewhat unsafe</i>	<i>Very unsafe</i>	<i>Don't know</i>
In your neighborhood during the day.....	1	2	3	4	5	6
In Athens-Clarke County's downtown/commercial area during the day	1	2	3	4	5	6

5. Please rate each of the following characteristics as they relate to Athens-Clarke County as a whole:

	<i>Excellent</i>	<i>Good</i>	<i>Fair</i>	<i>Poor</i>	<i>Don't know</i>
Traffic flow on major streets	1	2	3	4	5
Ease of public parking.....	1	2	3	4	5
Ease of travel by car in Athens-Clarke County	1	2	3	4	5
Ease of travel by public transportation in Athens-Clarke County	1	2	3	4	5
Ease of travel by bicycle in Athens-Clarke County	1	2	3	4	5
Ease of walking in Athens-Clarke County	1	2	3	4	5
Availability of paths and walking trails	1	2	3	4	5
Air quality	1	2	3	4	5
Cleanliness of Athens-Clarke County	1	2	3	4	5
Overall appearance of Athens-Clarke County.....	1	2	3	4	5
Public places where people want to spend time	1	2	3	4	5
Variety of housing options	1	2	3	4	5
Availability of affordable quality housing	1	2	3	4	5
Fitness opportunities (including exercise classes and paths or trails, etc.)	1	2	3	4	5
Recreational opportunities.....	1	2	3	4	5
Availability of affordable quality food.....	1	2	3	4	5
Availability of affordable quality health care	1	2	3	4	5
Availability of preventive health services	1	2	3	4	5
Availability of affordable quality mental health care	1	2	3	4	5

6. Please rate each of the following characteristics as they relate to Athens-Clarke County as a whole:

	<i>Excellent</i>	<i>Good</i>	<i>Fair</i>	<i>Poor</i>	<i>Don't know</i>
Availability of affordable quality child care/preschool	1	2	3	4	5
K-12 education	1	2	3	4	5
Adult educational opportunities.....	1	2	3	4	5
Opportunities to attend cultural/arts/music activities	1	2	3	4	5
Opportunities to participate in religious or spiritual events and activities	1	2	3	4	5
Employment opportunities	1	2	3	4	5
Shopping opportunities.....	1	2	3	4	5
Cost of living in Athens-Clarke County	1	2	3	4	5
Overall quality of business and service establishments in Athens-Clarke County.....	1	2	3	4	5
Vibrant downtown/commercial area	1	2	3	4	5
Overall quality of new development in Athens-Clarke County	1	2	3	4	5
Opportunities to participate in social events and activities	1	2	3	4	5
Opportunities to volunteer.....	1	2	3	4	5
Opportunities to participate in community matters	1	2	3	4	5
Openness and acceptance of the community toward people of diverse backgrounds	1	2	3	4	5
Neighborliness of residents in Athens-Clarke County	1	2	3	4	5

7. Please indicate whether or not you have done each of the following in the last 12 months.

	<i>No</i>	<i>Yes</i>
Made efforts to conserve water	1	2
Made efforts to make your home more energy efficient	1	2
Observed a code violation or other hazard in Athens-Clarke County (weeds, abandoned buildings, etc.)	1	2
Household member was a victim of a crime in Athens-Clarke County	1	2
Reported a crime to the police in Athens-Clarke County	1	2
Stocked supplies in preparation for an emergency	1	2
Campaigned or advocated for an issue, cause or candidate	1	2
Contacted Athens-Clarke County (in-person, phone, email or web) for help or information	1	2
Contacted Athens-Clarke County elected officials (in-person, phone, email or web) to express your opinion.....	1	2

8. In the last 12 months, about how many times, if at all, have you or other household members done each of the following in Athens-Clarke County?

	<i>2 times a week or more</i>	<i>2-4 times a month</i>	<i>Once a month or less</i>	<i>Not at all</i>
Used Athens-Clarke County recreation centers or their services.....	1	2	3	4
Visited a neighborhood park or County park.....	1	2	3	4
Used Athens-Clarke County public libraries or their services	1	2	3	4
Participated in religious or spiritual activities in Athens-Clarke County	1	2	3	4
Attended an Athens-Clarke County-sponsored event.....	1	2	3	4
Used bus, rail, subway or other public transportation instead of driving.....	1	2	3	4
Carpooled with other adults or children instead of driving alone.....	1	2	3	4
Walked or biked instead of driving	1	2	3	4
Volunteered your time to some group/activity in Athens-Clarke County	1	2	3	4
Participated in a club	1	2	3	4
Talked to or visited with your immediate neighbors	1	2	3	4
Done a favor for a neighbor.....	1	2	3	4

9. Thinking about local public meetings (of local elected officials like City Council or County Commissioners, advisory boards, town halls, HOA, neighborhood watch, etc.), in the last 12 months, about how many times, if at all, have you or other household members attended or watched a local public meeting?

	<i>2 times a week or more</i>	<i>2-4 times a month</i>	<i>Once a month or less</i>	<i>Not at all</i>
<u>Attended</u> a local public meeting	1	2	3	4
<u>Watched</u> (online or on television) a local public meeting.....	1	2	3	4

Athens-Clarke County 2018 Citizen Survey

10. Please rate the quality of each of the following services in Athens-Clarke County:

	<i>Excellent</i>	<i>Good</i>	<i>Fair</i>	<i>Poor</i>	<i>Don't know</i>
Police services	1	2	3	4	5
Fire services.....	1	2	3	4	5
Ambulance or emergency medical services	1	2	3	4	5
Crime prevention.....	1	2	3	4	5
Fire prevention and education.....	1	2	3	4	5
Traffic enforcement	1	2	3	4	5
Street repair	1	2	3	4	5
Street cleaning	1	2	3	4	5
Street lighting.....	1	2	3	4	5
Sidewalk maintenance	1	2	3	4	5
Traffic signal timing.....	1	2	3	4	5
Bus or transit services.....	1	2	3	4	5
Garbage collection	1	2	3	4	5
Recycling	1	2	3	4	5
Yard waste pick-up	1	2	3	4	5
Storm drainage	1	2	3	4	5
Drinking water.....	1	2	3	4	5
Sewer services	1	2	3	4	5
Utility billing	1	2	3	4	5
County parks.....	1	2	3	4	5
Recreation programs or classes.....	1	2	3	4	5
Recreation centers or facilities	1	2	3	4	5
Land use, planning and zoning.....	1	2	3	4	5
Code enforcement (weeds, abandoned buildings, etc.)	1	2	3	4	5
Animal control	1	2	3	4	5
Economic development	1	2	3	4	5
Health services	1	2	3	4	5
Public library services	1	2	3	4	5
Public information services	1	2	3	4	5
Cable television.....	1	2	3	4	5
Emergency preparedness (services that prepare the community for natural disasters or other emergency situations).....	1	2	3	4	5
Preservation of natural areas such as open space, farmlands and greenbelts.....	1	2	3	4	5
Athens-Clarke County open space.....	1	2	3	4	5
County-sponsored special events	1	2	3	4	5
Overall customer service by Athens-Clarke County employees (police, receptionists, planners, etc.)	1	2	3	4	5

11. Overall, how would you rate the quality of the services provided by each of the following?

	<i>Excellent</i>	<i>Good</i>	<i>Fair</i>	<i>Poor</i>	<i>Don't know</i>
Athens-Clarke County Government.....	1	2	3	4	5
The Federal Government	1	2	3	4	5

12. Please rate the following categories of Athens-Clarke County government performance:

	<i>Excellent</i>	<i>Good</i>	<i>Fair</i>	<i>Poor</i>	<i>Don't know</i>
The value of services for the taxes paid to Athens-Clarke County	1	2	3	4	5
The overall direction that Athens-Clarke County is taking	1	2	3	4	5
The job Athens-Clarke County government does at welcoming citizen involvement	1	2	3	4	5
Overall confidence in Athens-Clarke County government.....	1	2	3	4	5
Generally acting in the best interest of the community	1	2	3	4	5
Being honest.....	1	2	3	4	5
Treating all residents fairly	1	2	3	4	5

13. Please rate how important, if at all, you think it is for the Athens-Clarke County community to focus on each of the following in the coming two years:

	<i>Essential</i>	<i>Very important</i>	<i>Somewhat important</i>	<i>Not at all important</i>
Overall feeling of safety in Athens-Clarke County.....	1	2	3	4
Overall ease of getting to the places you usually have to visit.....	1	2	3	4
Quality of overall natural environment in Athens-Clarke County	1	2	3	4
Overall “built environment” of Athens-Clarke County (including overall design, buildings, parks and transportation systems)	1	2	3	4
Health and wellness opportunities in Athens-Clarke County	1	2	3	4
Overall opportunities for education and enrichment.....	1	2	3	4
Overall economic health of Athens-Clarke County.....	1	2	3	4
Sense of community.....	1	2	3	4
Create a long-range vision/strategy for the County	1	2	3	4

14. Athens-Clarke County is in the process of developing Corridor Plans for the Atlanta Highway, Lexington Road, and Prince Avenue, which aim to improve the experience and impression residents and visitors have of our community and increase understanding of the roads’ impact on traffic, pedestrians, bicyclists, and commerce. How important, if at all, is it for the Athens-Clarke County government to address each of the following in the development of this plan?

	<i>Essential</i>	<i>Very important</i>	<i>Somewhat important</i>	<i>Not at all important</i>	<i>Don’t know</i>
Develop additional medians	1	2	3	4	5
Landscape existing medians.....	1	2	3	4	5
Widen landscape buffers along the edge of roadways.....	1	2	3	4	5
Create gateway/arrival features as you enter the community	1	2	3	4	5
Improve access to commercial drives.....	1	2	3	4	5
Improve or add turn lanes	1	2	3	4	5
Improve signal timing	1	2	3	4	5
Add new traffic signals on Lexington Road between Cherokee/Gaines School and Barnett Shoals Road.....	1	2	3	4	5
Complete sidewalks along Lexington Road between Cherokee/Gaines School and Barnett Shoals Road.....	1	2	3	4	5
Build pedestrian bridges or tunnels.....	1	2	3	4	5
Enhance pedestrian crossings at traffic signals or mid-block	1	2	3	4	5
Enhance pedestrian/bike connectivity to nearby residential areas.....	1	2	3	4	5
Improve bus stops with shelters, benches and other amenities	1	2	3	4	5

15. To what extent, if any, do you support or oppose the Athens-Clarke County government working with neighboring cities and counties to address the following regional issues:

	<i>Strongly support</i>	<i>Somewhat support</i>	<i>Somewhat oppose</i>	<i>Strongly oppose</i>	<i>Don’t know</i>
Drinking water	1	2	3	4	5
Handling sewage.....	1	2	3	4	5
Economic development opportunities	1	2	3	4	5
Public transportation	1	2	3	4	5

16. To what extent, if any, would you support or oppose the Athens-Clarke County government allowing for some controlled residential or commercial development in the greenbelt and/or rural parts of our community?

☐ Strongly support ☐ Somewhat support ☐ Somewhat oppose ☐ Strongly oppose ☐ Don’t know

17. How frequently, if at all, did you use Athens Transit in the last 12 months?

- ☐ 2 times a week or more → skip to page 5
- ☐ 2-4 times a month → skip to page 5
- ☐ Once a month or less → go to question 18
- ☐ Not at all → go to question 18

18. If you used Athens Transit once a month or less or not at all in the last 12 months, why? (Mark all that apply).

- ☐ Fares too high
- ☐ Routes are not frequent enough
- ☐ Routes are not direct enough
- ☐ Routes don’t come near my house
- ☐ Routes don’t go where I need to go
- ☐ Would rather drive my own car
- ☐ Other
- ☐ None of these

Athens-Clarke County 2018 Citizen Survey

Our last questions are about you and your household. Again, all of your responses to this survey are completely anonymous and will be reported in group form only.

D1. How often, if at all, do you do each of the following, considering all of the times you could?

	<i>Never</i>	<i>Rarely</i>	<i>Sometimes</i>	<i>Usually</i>	<i>Always</i>
Recycle at home	1	2	3	4	5
Purchase goods or services from a business located in Athens-Clarke County	1	2	3	4	5
Eat at least 5 portions of fruits and vegetables a day	1	2	3	4	5
Participate in moderate or vigorous physical activity	1	2	3	4	5
Read or watch local news (via television, paper, computer, etc.)	1	2	3	4	5
Vote in local elections.....	1	2	3	4	5

D2. Would you say that in general your health is:

- ☐ Excellent ☐ Very good ☐ Good ☐ Fair ☐ Poor

D3. What impact, if any, do you think the economy will have on your family income in the next 6 months? Do you think the impact will be:

- ☐ Very positive ☐ Somewhat positive ☐ Neutral ☐ Somewhat negative ☐ Very negative

D4. What is your employment status?

- ☐ Working full time for pay
☐ Working part time for pay
☐ Unemployed, looking for paid work
☐ Unemployed, not looking for paid work
☐ Fully retired

D5. Do you work inside the boundaries of Athens-Clarke County?

- ☐ Yes, outside the home
☐ Yes, from home
☐ No

D6. How many years have you lived in Athens-Clarke County?

- ☐ Less than 2 years ☐ 11-20 years
☐ 2-5 years ☐ More than 20 years
☐ 6-10 years

D7. Which best describes the building you live in?

- ☐ One family house detached from any other houses
☐ Building with two or more homes (duplex, townhome, apartment or condominium)
☐ Mobile home
☐ Other

D8. Is this house, apartment or mobile home...

- ☐ Rented
☐ Owned

D9. About how much is your monthly housing cost for the place you live (including rent, mortgage payment, property tax, property insurance and homeowners' association (HOA) fees)?

- ☐ Less than \$300 per month
☐ \$300 to \$599 per month
☐ \$600 to \$999 per month
☐ \$1,000 to \$1,499 per month
☐ \$1,500 to \$2,499 per month
☐ \$2,500 or more per month

D10. Do any children 17 or under live in your household?

- ☐ No ☐ Yes

D10a. If yes – do the children attend school in the Athens-Clarke County School District?

- ☐ No ☐ Yes ☐ Don't know

D11. Are you or any other members of your household aged 65 or older?

- ☐ No ☐ Yes

D12. How much do you anticipate your household's total income before taxes will be for the current year? (Please include in your total income money from all sources for all persons living in your household.)

- ☐ Less than \$25,000
☐ \$25,000 to \$49,999
☐ \$50,000 to \$99,999
☐ \$100,000 to \$149,999
☐ \$150,000 or more

Please respond to both questions D13 and D14:

D13. Are you Spanish, Hispanic or Latino?

- ☐ No, not Spanish, Hispanic or Latino
☐ Yes, I consider myself to be Spanish, Hispanic or Latino

D14. What is your race? (Mark one or more races to indicate what race you consider yourself to be.)

- ☐ American Indian or Alaskan Native
☐ Asian, Asian Indian or Pacific Islander
☐ Black or African American
☐ White
☐ Other

D15. In which category is your age?

- ☐ 18-24 years ☐ 55-64 years
☐ 25-34 years ☐ 65-74 years
☐ 35-44 years ☐ 75 years or older
☐ 45-54 years

D16. What is your sex?

- ☐ Female ☐ Male

D17. Do you consider a cell phone or land line your primary telephone number?

- ☐ Cell ☐ Land line ☐ Both

Thank you for completing this survey. Please return the completed survey in the postage-paid envelope to: National Research Center, Inc., PO Box 549, Belle Mead, NJ 08502