



Understanding the Community Tree Management Ordinance

Athens-Clarke County Community Tree Program

Landmark Trees

Landmark trees are those that are large, rare, or significant to our community. Athens-Clarke County has created the Landmark tree designation to encourage documentation and conservation of this special resource. When conserved during development, landmark trees receive double canopy credits.

Criteria for Designation

- Age greater than 50 years (documented through photos or planting records or as determined by the ACC Forester, ACC Arborist, or any other certified arborist)
- Large canopy trees greater than 36" diameter, medium canopy trees greater than 24" diameter, small canopy trees greater than 12" diameter
- A National, State, or County champion tree
- A unique or rare species (as listed on the ACC Unique and Rare Species List)
- Trees associated with a documented historic event, person, or community landmark
- Trees planted during Arbor Day or other community-wide public celebration
- Trees planted in honor or memory of an individual or event
- Trees that belong to a significant cross-property or neighborhood-wide planting that affect the greater landscape beyond the property on which they grow



Figure 1: Athens' most famous
Landmark, The Tree That Owns Itself

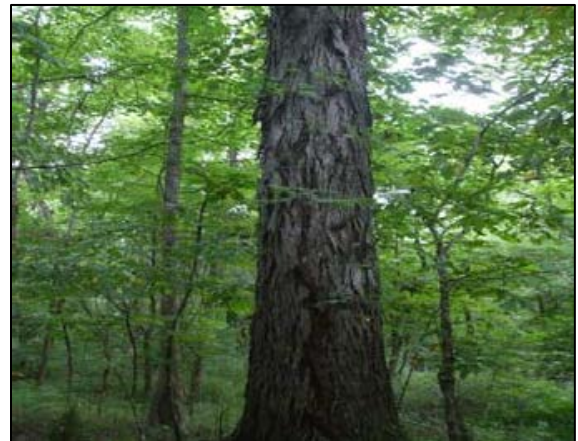


Figure 2: This Landmark tree is a
rare species, over 36", over 50
years old, and a county champion.

Enrollment Process

Any property owner can nominate his/her trees for Landmark tree status by completing the Landmark Tree Application to the best of his/her ability and submitting it to the Community Forester. The Forester will verify the application during a site visit and approve or reject the nomination. If the applicant feels that the tree has been unjustly denied, he/she can file an appeal with the Community Tree Council (CTC). Appeals can be made by sending the original application with a letter of appeal to the CTC and it will be reviewed at the next regularly scheduled CTC meeting.

For more information, contact the Athens-Clarke County Community Forestry Coordinator at (762) 400-7519 or by e-mail at Mateo.Fennell@accgov.com .