

# **North Athens Neighborhood Old Elberton Road Sidewalks**

---

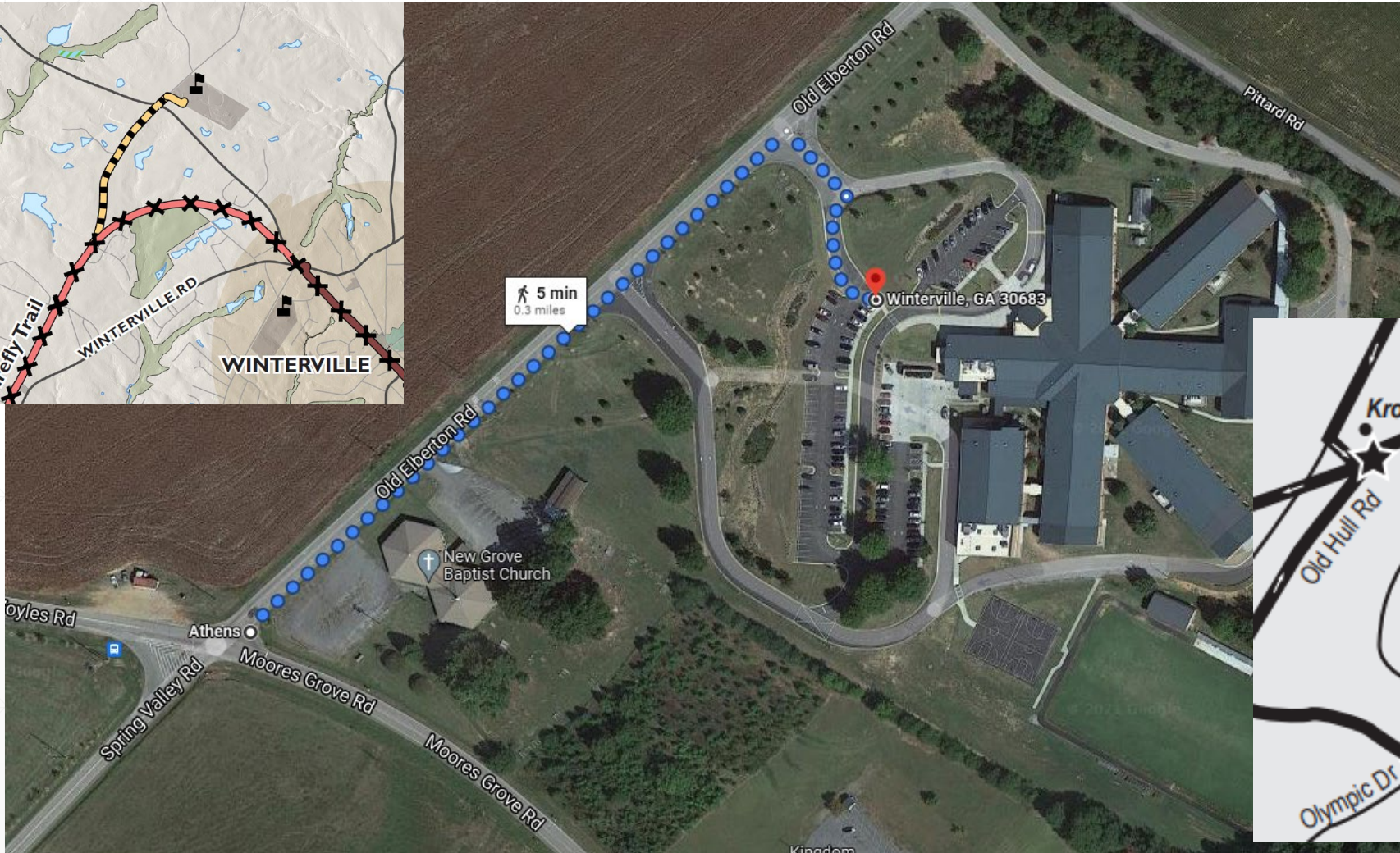
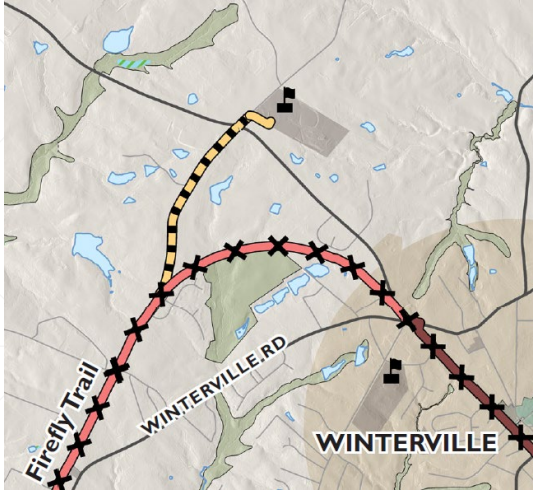
TSPLOST 2023 – Project No. 49

# Project Scope

Provide improved pedestrian connectivity between Coile Middle School, the Firefly Trail, and North Athens Circulatory Bus Route.

- Old Elberton Road - Sidewalks along Old Elberton Road, from Pittard Road to Coile Middle School.
  - Old Elberton Road - Sidewalks along Old Elberton Road, from Coile Middle School to Moores Grove Road.
  - Moores Grove Road - Sidewalks along Moores Grove Road to connect to Firefly Trail.
  - Approximately 1,600 LF of 5-foot-wide sidewalk.
-

# Coile Middle School Area



- Provide improved pedestrian connectivity between Coile Middle School, the Firefly Trail, and North Athens Circulatory Bus Route.





# Old Elberton – Pittard to Moores Grove



- Old Elberton Road - Sidewalks along Old Elberton Road, from Pittard Road to Coile Middle School.
- Old Elberton Road - Sidewalks along Old Elberton Road, from Coile Middle School to Moores Grove Road.





# Moore's Grove – Old Elberton to Firefly Trail/5 Points



- Moore's Grove Road/Voyles - Sidewalks along Moore's Grove Road to connect to Firefly Trail.

# **In what specific ways will this project “Close the Equity Gap” in Athens-Clarke County, by improving the Equitability of Capital Improvements throughout the entire community?**

The project provides capital improvements to the North Athens Neighborhood, a traditionally underserved area of our community.

- The project invests in infrastructure improvements that address accessibility issues and serious gaps in connectivity.
  - The project invests in infrastructure improvements that address health and safety concerns of existing conditions.
  - The project invests in infrastructure that will greatly improve residents' access to community facilities and resources and commercial centers.
-

# How will this project address one or more of the Mayor and Commission approved Strategic Commitments and Project Selection Criteria?

- **Protects the community's existing Transportation Infrastructure Investments and Reduces the Pavement Maintenance deficit** by reducing dependencies on existing roadway infrastructure and reducing vehicular wear on existing facilities.
  - **Promotes the Upgrade and Continued Use of Alternative Transportation Facilities** by promoting bike, pedestrian, and transit connectivity between students and Coile Middle School, encouraging alternative modes of transportation.
  - **Increased Access to existing public facilities** by promoting bike and pedestrian connectivity between students and Coile Middle School, encouraging alternative modes of transportation.
  - **Promotes increased usage of the Transit System, including improving Pedestrian access to Transit Facilities** by encouraging bike and pedestrian modes of transportation and access from Coile Middle School and the existing bus route. Improved access and mobility for parents.
-

# How will this project address one or more of the Mayor and Commission approved Strategic Commitments and Project Selection Criteria?

- **Increases capital for Transit services or expands the Transit System** by encouraging bike and pedestrian modes of transportation and access from Coile Middle School and the existing bus route. Improved access and mobility for parents. This project provides greater opportunities for ridership.
  - **Maintains or Improves air quality, reduces vehicle miles traveled and traffic congestion, and reduces time spent traveling in vehicles** by encouraging bike and pedestrian modes of transportation, reducing vehicular trips, and reducing CO2 emissions.
  - **Promotes Health and Safety** by encouraging bike and pedestrian modes of transportation, active mobility, and opportunities for exercise.
  - Directly supports **sidewalk and multi-use trail construction** and connectivity to public community centers and the Firefly Trail.
-



# What aspects of this project will focus on improving the “Triple Bottom Line” (Impact on Economic Prosperity, Social Well-being, and the Environment)?

- This project positively impacts **Economic Prosperity** and **Social Well-being** by encouraging greater access to educational opportunities and community centers thereby increasing economic opportunities for traditionally underserved residents and improving equitable access to public facilities.
  - This project positively impacts the **Environment** by encouraging pedestrian modes of transportation thereby reducing vehicular traffic and CO2 emissions.
-

# Q&A

