

North Athens Neighborhood JJ Harris Greenway Connector

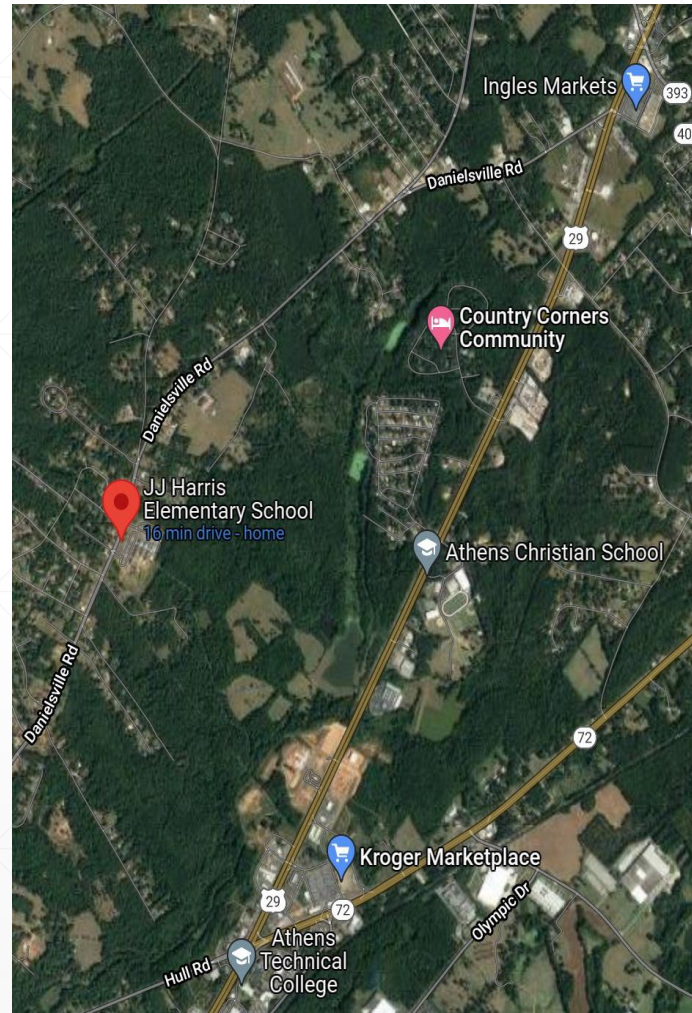
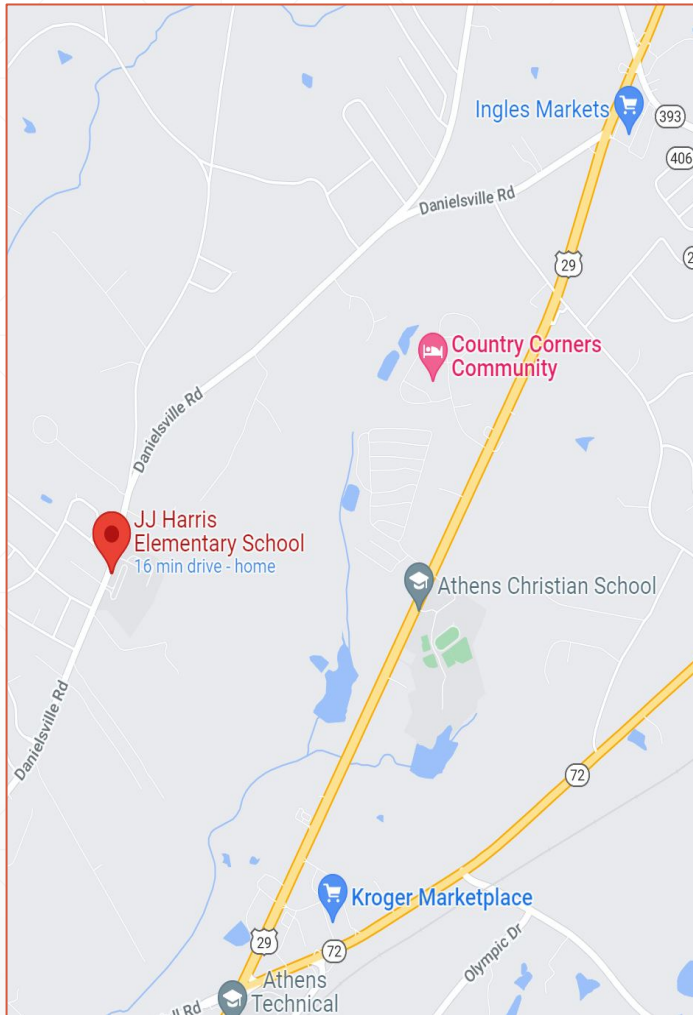
TSPLOST 2023 – Project No. 58

Project Scope

Provide connectivity between JJ Harris Elementary School, Danielsville Rd., and US Hwy 29 North.

- Develop trail connecting JJ Harris Elementary School and Danielsville Rd with US Hwy 29 North.
 - Construct approximately 5,500 LF of 10 foot wide trail to connect JJ Harris Elementary School, Danielsville Road with US Hwy 29 North.
-

Project Area



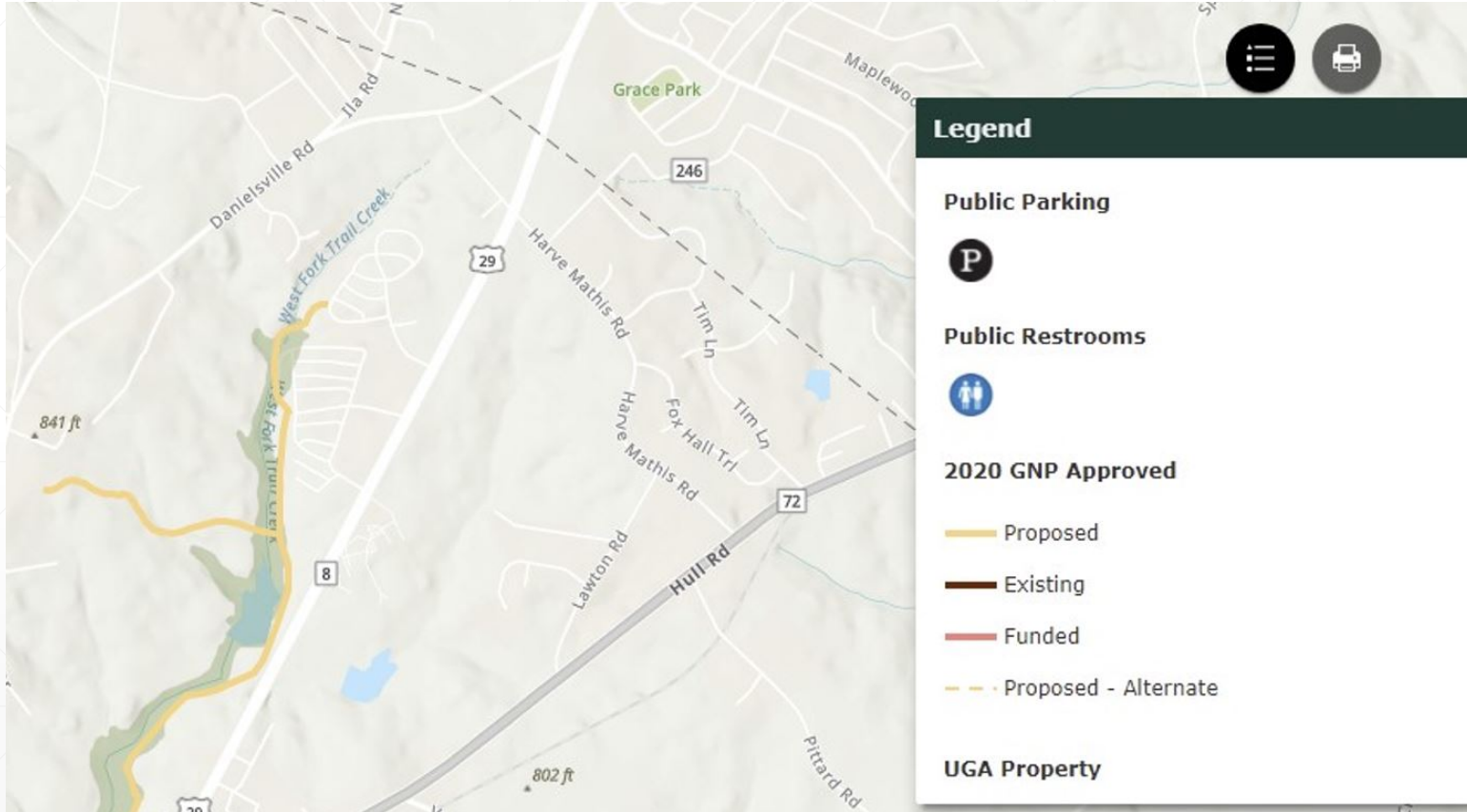
- Provide connectivity between JJ Harris Elementary School, Danielsville Rd., and US Hwy 29 North.
- Develop trail connecting JJ Harris Elementary School and Danielsville Rd with US Hwy 29 North.
- Construct approximately 5,500 LF of 10 foot wide trail to connect JJ Harris Elementary School, Danielsville Road with US Hwy 29 North.

Danielsville Road – JJ Harris Sidewalk Ends



- Construct approximately 5,500 LF of 10 foot wide trail to connect JJ Harris Elementary School, Danielsville Road with US Hwy 29 North.

Danielsville Road – JJ Harris Sidewalk Ends



- Construct approximately 5,500 LF of 10 foot wide trail to connect JJ Harris Elementary School, Danielsville Road with US Hwy 29 North.
- Identified in the Greenway Network Plan

Danielsville Road – JJ Harris Sidewalk Ends



- Construct approximately 5,500 LF of 10 foot wide trail to connect JJ Harris Elementary School, Danielsville Road with US Hwy 29 North.

Danielsville Road Approaching US 29N



- Construct approximately 5,500 LF of 10 foot wide trail to connect JJ Harris Elementary School, Danielsville Road with US Hwy 29 North.

In what specific ways will this project “Close the Equity Gap” in Athens-Clarke County, by improving the Equitability of Capital Improvements throughout the entire community?

The project provides capital improvements to the North Athens Neighborhood, a traditionally underserved area of our community.

- The project invests in infrastructure improvements that address gaps in connectivity within the neighborhood.
 - The project invests in infrastructure that will greatly improve access to JJ Harris Elementary School and provide a safe route to school for much of the student population and their families.
 - The project invests in infrastructure that addresses health and safety by providing greater access to recreational facilities.
 - Through capital investments the project improves the access of North Athens residents to goods and services.
-

How will this project address one or more of the Mayor and Commission approved Strategic Commitments and Project Selection Criteria?

- **Promotes the upgrade and continued use of Alternative Transportation Facilities and promotes increased access to existing public facilities** by promoting bike and pedestrian connectivity between residents and the goods and services along Danielsville Road, US Hwy 29 North, and JJ Harris Elementary School.
- **Maintains or Improves air quality, reduces vehicle miles traveled and traffic congestion, and reduces time spent traveling in vehicles** by encouraging bike and pedestrian modes of transportation, reducing vehicular trips, and reducing CO2 emissions.
- **Promotes Health and Safety** by encouraging bike and pedestrian modes of transportation, active mobility, and opportunities for exercise.

(continued)

How will this project address one or more of the Mayor and Commission approved Strategic Commitments and Project Selection Criteria?

- **Continues Sidewalk & Multi-Use Trail construction** by directly supporting sidewalk and multi-use trail construction and connectivity to public community centers.
 - **Implements components of an updated Greenway Network Plan** by directly supports sidewalk and multi-use trail construction and connectivity to public community centers as shown on the updates Greenway Network Plan, Northeast Quadrant Map.
-

What aspects of this project will focus on improving the “Triple Bottom Line” (Impact on Economic Prosperity, Social Well-being, and the Environment)?

- This project positively impacts **Economic Prosperity** and **Social Well-being** by encouraging greater bike and pedestrian access to goods and services and community centers thereby increasing economic opportunities and improving equitable access to public facilities for traditionally underserved residents.
-

Q&A

