

Submitted By: Alex Harvey
Timothy Forward
Phone: (706) 372-4261
Email: AJHarvey34@gmail.com

Project Type: Streets/Roads/Bridges related projects - Transportation & Public Works Department
General Program Goal: Social Well-Being

Previously Submitted and Rejected: No
Continuation Project: Yes - TSPLOST 2018, Project 15

Project Total Cost: \$ 23,343,000 **Total Annual Operating Cost:** \$65,000

Abbreviated - Project Description: This project provides funding for the design and construction of sidewalk and multiuse paths on both sides of Timothy Road from Macon Highway to Atlanta Highway. The project also includes traffic calming, intersection, and pedestrian/bicycle crossing improvements.

Project Location/Address: Timothy Road from Atlanta Highway to Macon Highway, SR 441/Loop 10

Is the Site currently owned by the Unified Government of Athens-Clarke County? Partially

Is the Site within State Highway Rights-of-Way? Partially

Site Specific Information: Minor arterial - moves traffic through southwestern ACC, serves neighborhoods, commercial centers, etc. Connects Atlanta Highway to Epps Bridge Parkway, Macon Highway, Loop 10, and SR 441

Posted Speed Limit: - 35 miles per hour (mostly disrespected)

Destinations:

Timothy Road Elementary School

4 churches	Restaurants	CVS	gas station
2 daycares	Academy Sports		shopping plaza
Middle Oconee Water Trail			

Neighborhoods served - Many 100% car-dependent:

Kingswood	Idlewilde	Columns at Timothy Woods	Colleton Oaks	
Glen Oaks	Pinewood Circle	Timothy Park	Cypress Manor	Wexford Place
Skyline	Kalen Hollow	Renfrew Estates	Timothy Estates	Tanglewood
Dillard property	Georgian Hills	Townswalk	McNutts Creek	Sheats Drive
Berkley Hills	Glenview			

49 homes front Timothy Road

Timothy Road connects the SW quadrant of Athens-Clarke from Oconee County (@ SR441/Loop 10) to Atlanta Highway (SR78). Pedestrians and bicyclists are at risk at all intersections. The southern "gateway" site at the county line invites speeding and reckless driving. It is an opportunity to create a beautiful "gateway" to Athens-Clarke County.

Attachment 1 Existing Conditions

Attachment 2 Isolation

Attachment 3 Southern Entrance to Athens-Clarke County

Does this Project require the acquisition of any land rights, whether existing sites, new site, easements, or Rights-of-Way? Yes, additional Rights-of-Way would be needed for the complete construction.

Project/Program Description: This project will develop safe multi-modal transportation facilities along both sides of Timothy Road's 4.1 miles, and will address safety for all users at intersections and crossings. These facilities will connect residents of diverse neighborhoods and individual street-facing homes with local businesses, four churches, an elementary school, two daycare centers, three transit stops, and planned Greenways.

Project Objectives:

- Complete Streets Improvements from end to end:

 - 4.1 miles of continuous multi-use path on one side

 - 4.1 miles of continuous sidewalk on the other side

 - Pedestrian safety measures at well-placed crossings

- Traffic Calming:

 - Road design for 85th percentile speed of 35 mph or lower from end to end

- Intersection Improvements:

 - Highway 441/Timothy Road @ Timothy Road (Corridor "gateway" with safe vehicular, pedestrian, and bicycle access)

 - Atlanta Highway @ Timothy Road

 - Design will anticipate Intersection realignment and call for improved pedestrian and bike crossings.

 - Integration with Atlanta Highway sidewalks and bike facilities

 - Epps Bridge Parkway @ Timothy Road (improved pedestrian and bicycle crossings)

1. Coordinate design with TSPLOST 2018, Project 15 (Sub-project A10): realignment of Timothy/Mitchell Bridge Roads plus needed safety measures at Epps Bridge Parkway to prioritize safe crossings and connections to existing and planned bike and pedestrian infrastructure.

2. Design sidewalks, multi-user paths, and crossings.

3. Design Gateway Treatment (with roundabout if possible) for intersection of Timothy Road, SR 441,

and Loop 10. The Gateway will serve to define the southern entrance to Athens-Clarke County, reduce traffic speeds in all directions, beautify a neglected corner of Athens-Clarke County, and provide a place for outdoor art.

4 Design multi-use path for the segment of Timothy Road from the traffic light to the intersection with Macon Highway (Glenview).

5. Conduct public meetings and other forms of outreach with residents and other primary stakeholders to refine design requirements.

7. Present final design to public.

8. Begin construction

SEE ATTACHMENTS:

4 - Southern Gateway Location

5 - Timothy Road Multi-Modal Corridor cross-section concept

Project Mission Statement/Selection Criteria: MISSION: Develop Timothy Road as a "Multi-Modal Transportation Corridor from Atlanta Highway to Macon Highway/SR 441/Loop 10, to achieve safe and continuous bicyclist and pedestrian facilities per TSPLOST 2023 Goals. This project meets 12 of the Selection Criteria.

TSPLOST 2023 GOALS:

Economic Prosperity:

- bring customers to stores and restaurants on foot or bike
- Provide transportation options to those with no access to a car (see ATTACHMENT 6)
- Increase access to Transit for residents living less than one mile from existing stops
- Encourage ACC residents to spend in county

Social Well-Being:

- Connect 20 diverse neighborhoods and 49 street-facing homes with each other
 - many isolated by lack of safe pedestrian or bicycle access
- Provide car-free opportunities for shopping, dining, education, recreation, and worship.
- Facilitate community building
- Beautify a neglected corner of Athens-Clarke County

Environment

- Eliminate many short trips (i.e., to visit a friend next door or one street over)
- Encourage active transportation
- Reduce vehicle trips per household per day
- Provide opportunities for pollinator-friendly landscaping

Timothy Forward GOALS:

¥ Safety:

- Walking and biking access beyond one's home or cul-de-sac

- Separate pedestrians and cyclists from vehicular traffic
- Reduce crash risks at street-facing driveways and intersections
- Redesign of Timothy Road/Loop 10/441 interchange to eliminate crashes and facilitate access to Transit stops
- ¥ Community:
 - ¥ Connect 20 diverse neighborhoods and 49 street-facing homes
 - many isolated by lack of safe pedestrian or bicycle access
 - ¥ Encourage cross-neighborhood visiting and activities
 - ¥ Beautify southern entrance to Athens
- Give Timothy Corridor a defined sense of place from end-to-end
- Provide opportunities for pollinator-friendly landscaping and community gardening
- Connectivity:
 - Eliminate need for short car trips (i.e., to visit a friend next door or one street over)
 - Provide Car-free opportunities for shopping, dining, education, recreation, and worship.
 - Encourage active connections to Greenways, open spaces, and other destinations
 - Reduce vehicle trips per household per day

How is this Project recommended/included in any approved ACCGov Land Use Plan, Master Plan, Corridor Study, or Service Delivery Plan? MACORTS (TIP p.58); MACORTS 2045 Plan Update (multiple references, various projects); Epps Bridge Parkway Corridor Study; Athens in Motion Plan; Complete Streets Policy; Greenway Network Plan

How is this Project included in the Madison Athens-Clarke County Oconee Regional Transportation Study (MACORTS) long-range Transportation Improvement Plan (TIP)? MACORTS (TIP p.58); MACORTS 2045 Plan Update (pp. 72, 74, 77, 78, 83, 87, 104, 105, 117-121, 142, 149, 164, 179, 181, 236)

Attachments:

[Attachment 1 - Timothy Existing Conditions](#)

[Attachment 2 - Isolation](#)

PROJECT JUSTIFICATION

How will the Project meet one or more of the Selection Criteria?

Promotes the Goal of improving Equitability of capital improvements throughout the Community:

This project will:

1. develop complete and continuous pedestrian and bicycling facilities along Timothy Road to enhance access to jobs, businesses, schools, churches, daycares, and open spaces for the ~4,000 residents of Timothy Road's diverse neighborhoods.
2. Provide paved paths along Transit routes for underserved and inconvenienced communities in southwest Athens-Clarke County.
3. Enable safe access to Greenways (Middle Oconee Water Trail and Greenway Bridge to Riverhill/Beechwood) and destinations along the corridor for isolated, car-dependent residents and neighborhoods.
4. Reduce crashes and increase safety for all users of the Timothy Road Corridor, especially for those who have limited access to cars.
5. Expand opportunities for Transit stops along the corridor.

Protects the community's existing Transportation Infrastructure Investments: 1. Pedestrian and bicycling facilities will reduce vehicular traffic along Timothy Road by residents who are 100% car dependent and isolated due to lack of facilities. Many of these residents live within a half mile of transit cannot safely walk to stops. This investment will increase access to Transit and bring more users.

2. Reducing traffic speeds through traffic calming and other measures will increase the lifespan of paving.
3. People biking and walking to their destinations will cause no degradation to transportation infrastructure
4. Supports MACORTS 2045 projects 22 and 37 (Timothy Road Corridor and Safety Improvements (MACORTS 2045 Metropolitan Transportation Plan Update, pp. 104 & 105)

Promotes the Upgrade and Continued Use of Alternative Transportation Facilities: Timothy Forward arose out of a need for active transportation for residents who no access to sidewalks or bike lanes. Sidewalks and bicycle facilities including marked crosswalks would promote Active Transportation and represents a significant upgrade to Athens-Clarke County's inventory.

1. Bicycling on Timothy Road is too dangerous for all but the most experienced cyclists given the volume and speed of daily traffic as well as the many blind curves, driveways, and grade changes. (Athens in Motion identified Timothy Road as having a "level of comfort" score of 4, where 5 is a controlled access facility such as Loop 10.)
2. Continuous sidewalk and multi-use facilities from Atlanta Highway to Macon Highway would connect all

Timothy Road's diverse neighborhoods safely to existing and planned active transportation infrastructure.

3. Bicyclists and pedestrians go where there are sidewalks/multi-use paths and safe crossings. There are no bike or ped facilities south of Fox Trace Rd

Promotes increased access to existing public facilities: 1. Timothy Road Elementary school is a 15-minute bike ride from the isolated Towns Walk, McNutts Creek, and Georgian Hills neighborhoods. This represents a tremendous opportunity to increase access to existing public facilities.

2. The Timothy Road Multi-Modal Corridor would provide access to the nature trails near Timothy Elementary School and the planned park and mixed use development on Epps Bridge Parkway for many more users.

3. Car-dependent Timothy Road residents will be able to enjoy the benefits of walking and bicycling in safety and comfort on publicly owned pathways.

4. A planned public park west of the Middle Oconee River and south of Atlanta Highway will be available to many more users.

5. Timothy Residents will be able to bike and walk to the Beech Haven Property once it is developed into a public greenspace.

Promotes increased usage of the Transit System, including improving Pedestrian access to Transit Facilities: A key objective of the Timothy Road Multi-Modal Transportation Corridor is to provide greater access to Transit stops near the Macon Highway intersection. At present, Transit users must walk along "goat paths" to reach their stops. This is not only undignified, it is a major disincentive to using Transit for those who have a choice.

Developing this corridor will also create opportunities along Timothy Road for new Transit stops/routes.

Maintains or Improves Air Quality: 1. Biking and walking produce no carbon dioxide.

2. Every mile not driven equals 400 fewer grams of carbon dioxide released into the air we breathe.

3. Most of the trips into and out of Timothy Road are short-distance, therefore the least fuel-efficient and most polluting.

4. Driving the length of Timothy Road creates approximately 1,600 grams of carbon dioxide, or more depending on the vehicle.

Reduces vehicle miles traveled and traffic congestion: 1. Every person who chooses to walk or bike to his/her/their destination equals one less car on the road.

2. High density development in Oconee County will continue to increase traffic on Timothy Road across the next ten years. The existing level of service will deteriorate to the point that emergency vehicles will be unable to respond timely to calls from residents whose only way in or out is on Timothy Road.

3. Inbound congestion will encourage Timothy Road residents to use the Loop 10 bypass to go short distances rather than inch along through multiple traffic light cycles.

4. Walking and biking options reduce vehicle miles traveled, as well as congestion.

Reduces time spent traveling in vehicles: 1. Every person who chooses to walk or bike to his/her/their destination equals less time spent traveling in vehicles.

2. The sidewalk and bike lane deficit on Timothy Road creates many unnecessary short car trips.

Georgian Hills, for example, is a small, cul-de-sac neighborhood directly across from the Unitarian and Anglican churches. Walking to these churches involves traversing an overgrown storm water ditch and trespassing on a neighbor's front yard and driveway to reach the dangerous intersection at Rambling Road. Sidewalks and multi-use paths with properly marked crosswalks would allow residents of this and other neighborhoods to walk to the churches or to visit nearby neighbors.

Continues TSPLOST 2018 Corridor Improvements or transportation related safety improvements:

1. Timothy Road intersects with Atlanta Highway and Epps Bridge Parkway, two major east-west corridors. The 2018 TSPLOST Project 15 (A21, A22, A25, A26) has strong public support for pedestrian and bicycle projects along Timothy Road.

2. Realigning the intersection of Atlanta Highway at Mitchell Bridge and Timothy Roads (Atlanta Highway TSPLOST 2018 Project #15 sub-project A10) has strong public support. (See ATTACHMENT 7 - Atlanta Highway/Timothy/Mitchell Bridge Realignment)

3. Intersection redesign requirements for Atlanta Highway at Timothy and Mitchell Bridge Roads will include ped and bicyclist safety accommodations and connections if both projects are approved for funding.

4. Timothy Road from Atlanta Highway to SR Loop 10 and Macon Highway averages 190 crashes per year. (see ATTACHMENT 8 - Crash data by location)

5. Bicyclists ride on existing narrow sidewalks, putting pedestrians at risk. Building the multi-use path along one side of Timothy will eliminate these conflicts

Promotes Health and Safety: Many Timothy Road residents have limited or no access to sidewalks or bicycle facilities.

1. Walking 30 minutes daily improves cardiovascular health, strengthens bones, promotes weight loss, builds muscles, and increases aerobic endurance, according to the Mayo Clinic.

2. Bicycling has similar health benefits to walking. In addition, it improves balance and strengthens the knee joints, according to the National Institutes of Health (NIH).
3. Both forms of active transportation have mental health benefits as well, according to the NIH.
4. Separating bicyclists and pedestrians from vehicular traffic increases safety for those who do not - or choose not to - drive, according to the US Department of Transportation.
5. Easy access to parks, greenways, and trails enables and encourages people to exercise, while also exposing them to nature, improving psychological, physical, and social well-being.

Continues Sidewalk & Multi-Use Trail construction: 1. The Timothy Road Multi-Modal Transportation Project connects existing pedestrian and bicycling facilities to planned Tier 1, 2, & 3 active transportation projects, as well as planned and funded greenways defined in the Greenway Network Plan. (See attachment x)

2. Multi-use trail from Macon Highway to Epps Bridge Parkway would link both bicyclists and pedestrians to the Middle Oconee River Greenway. (see Athens in Motion Plan Pedestrian and Bike Facilities map - attachment X)

Implements components of an updated Greenway Network Plan: The Timothy Road Multi-Modal Transportation Corridor will connect with the Middle Oconee River Greenway via a proposed bridge at Riverhill Road. Another connection is the Middle Oconee Water Trail which will be accessible by a short walk or bike ride from the intersection of Timothy Road and Macon Highway.

When fully built out the Normaltown Connector will provide access to the network and the Beech Haven property via Atlanta Highway. The Athens in Motion Commission is submitting a TSPLOST 2023 proposal for connected bike and pedestrian facilities from Mitchell Bridge/Timothy Roads to Hawthorne Avenue.

Triple Bottom Line Impacts

Positive Benefits for the Economic Prosperity of Athens-Clarke County: Safe pedestrian and bicycle traffic along this important corridor will benefit Athens-Clarke County in many ways:

1. Businesses will benefit:
 - customers will have multiple ways to access businesses
 - parking will be less of a hassle
 - foot traffic attracts more customers
 - A more vibrant community fosters economic growth
2. Homeowners will benefit:

- More opportunities for transportation
- More connected communities
- Greater access to businesses, schools, churches, daycares, etc.
- Property values will increase

3. Athens-Clarke County will benefit:

- More pedestrians and bicyclists means fewer cars
- An active, thriving community attracts visitors
- Fewer vehicle crashes reduces fatalities and serious injuries
- Higher property taxes and increased sales taxes provide funding for critical infrastructure projects

Detrimental Impacts to the Economic Prosperity of Athens-Clarke County: No detrimental impacts to the economic prosperity of Athens-Clarke County have been identified.

Positive Benefits for the Social Well-Being of our Residents and visitors:

- Greater opportunities for socializing
- Easier, more comfortable, and safer movement between neighborhoods and street-facing homes
- Biking and walking have well-documented mental and physical health benefits
- Biking and walking are often linked to social activities

Detrimental Impacts for the Social Well-Being of our Residents and visitors: No detrimental impacts to the economic prosperity of Athens-Clarke County have been identified.

Positive Impacts on the Environment: • Fewer short car trips will reduce carbon pollution

- Biking and walking to shop, eat, visit, etc., create no air or water pollution
- Easier access to Transit can reduce the need for multiple car households and car-trips per day
- Reduced traffic congestion along the Timothy Corridor will improve air quality and cleanliness of storm water run-off

Detrimental Impacts on the Environment: Construction of the multi-modal transportation facilities will have some short- and medium-term negative impacts:

- Loss of trees currently growing in public right-of-way
- Traffic delays due to lane closures will increase air pollution temporarily
- Additional hard surface may increase storm water volume

Positive/Negative Impacts on ACCGov Departments, Agencies, or other Organizations, if not covered in one of the above questions: ACCGov stands to benefit in many ways by completing the Timothy Road Multi-Modal Transportation Corridor Project:

- Politically - residents of Timothy Road communities (south of Fox Trace Road) have been asking for sidewalks for decades.
- Socially - Approximately 50 residences, majority owner-occupied, face Timothy Road and have no ability to walk safely to a neighbor's house or bike anywhere.
- Public Health - More safe walking and biking opportunities will reduce chronic illnesses, promote healthy lifestyles, and prevent crashes

- Economically - Prosperity will increase, county-wide, due to rising home values. The city of Athens will raise its profile as a destination. Athens businesses will benefit from increased patronage through foot and bike traffic, leading to greater sales tax revenues. Finally, construction projects create short-term and long-term jobs.

Attachments:

[Attachment 3 - Sidewalk Deficit](#)

[Attachment 4 - Cross Section Concept](#)

Project Costs

Detailed project capital budget costs (to be funded from TSPLOST 2023 only):

Project Costs (round to thousand)	Amount
1. Land Acquisition / ROW / Easement:	\$ 1,428,000
2. Design Fees: (Min.12% of New Const.; 14% of reno,; 16% for LEED proj.)	\$ 1,885,000
3. Miscellaneous Fees: (Min. Minimum of 3% of Construction Costs – used for permitting, etc. Utilize minimum of 10% if land acquisition if necessary.	\$ 428,000
4. Construction:	\$ 14,282,000
5. Construction Contingency: (10% of the Construction line item)	\$ 1,428,000
6. Acquisition of Capital Equipment	\$ -
7. Testing:	\$ 428,000
8. Project Management: (4% of the total budget line items above)	\$ 796,000
9. Project Contingency: (10% of the total budget line items above)	\$ 2,067,000
10. Public Art: Calculated at 1% of the Construction line item.	\$ 143,000
11. Other 1:	\$
12. Other 2:	\$
Project Subtotal:	\$ 22,885,000
14. Program Management (2% of Project Subtotal):	\$ 458,000
TSPLOST 2023 Project Total:	\$ 23,343,000

Operating Cost

Total Annual Net Operating Costs when Project is complete:

Only identify additional or net operating costs to be paid by ACCGov as a result of this Project. Identify the additional or net costs needed, above ACCGov's current operating budget, to operate the requested project; as well as any additional Project related revenues that would be generated. Provide budget costs for each identified category below.

Operating Costs (round to thousand)	Estimated Impact for Annual Operating Expenditures
TOTAL PROJECTED REVENUES FROM PROJECT	
PROJECTED EXPENDITURES	
1. Personnel Costs: Additional Maint. Landscape Crew	43,000
2. Annual Utilities:	
• Natural Gas:	
• Electrical:	
• Water:	
• Sewer:	
• Phone:	
• Solid Waste Collection:	
• Other:	
3. Operating Supplies:	9,000
4. Equipment Maintenance:	1,000
5. Facility Maintenance:	
6. Other: Public art maintenance (minimum)	1,000
7. Other: Zero-turn mower	11,000
8. Other:	
TOTAL EXPENDITURES	
NET OPERATING COSTS OF PROJECT:	\$ 65,000

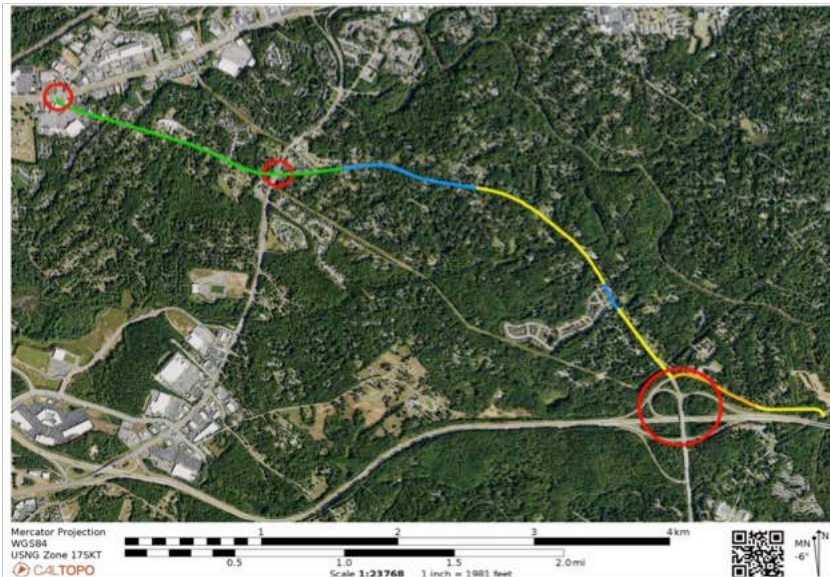
Project Financing

Is the proposed Project to receive funding from source(s) other than TSPLOST 2023? No

Other Attachments:

[Attachment 5 - Cover Letter](#)

Existing sidewalk connections



Sidewalk both sides of
Timothy Road
from Atlanta Highway to
Epps Bridge Parkway

Sidewalk one or the other
side of Timothy Road

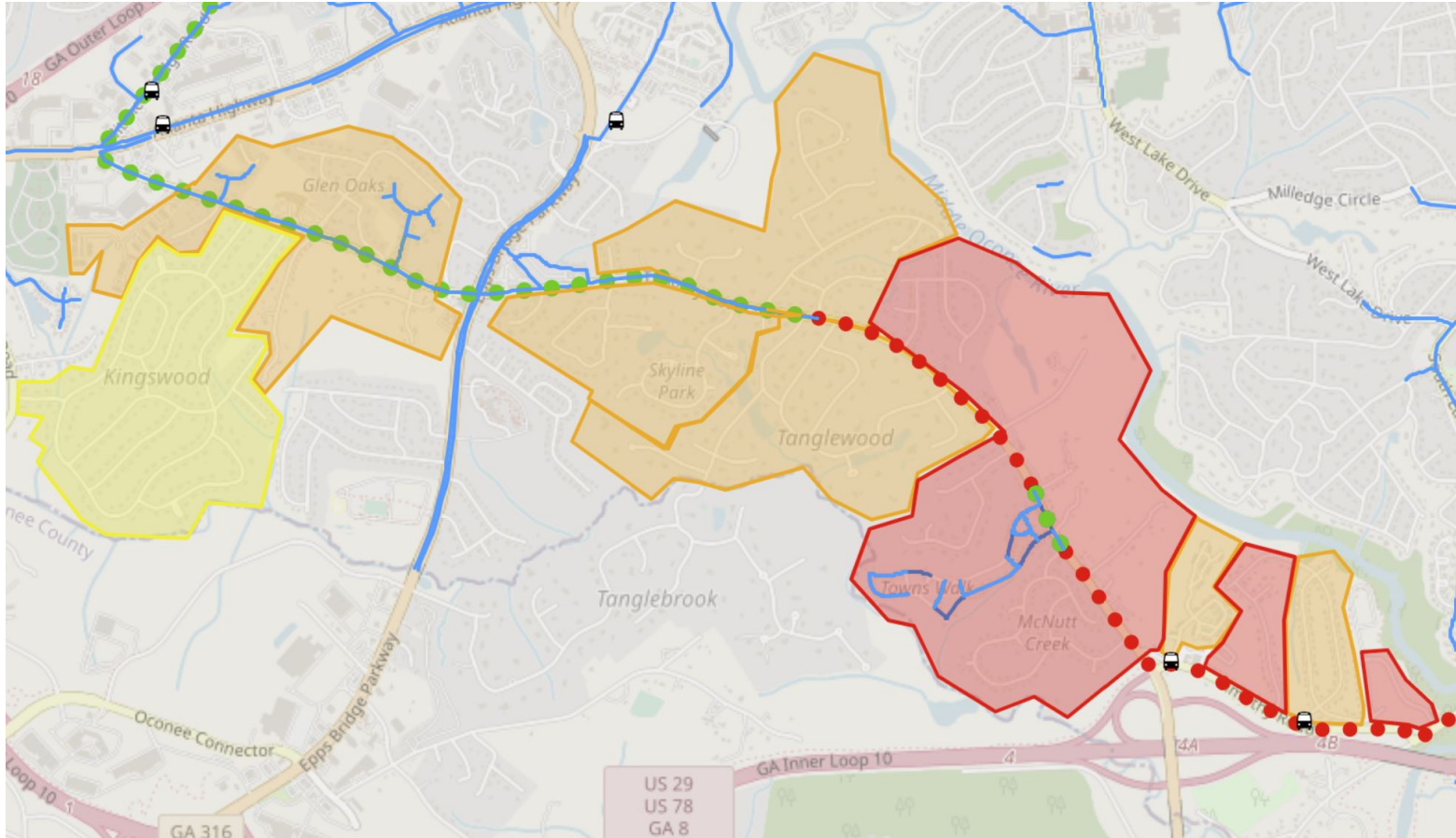
No sidewalk

Transit stops and goat
path (no sidewalk)

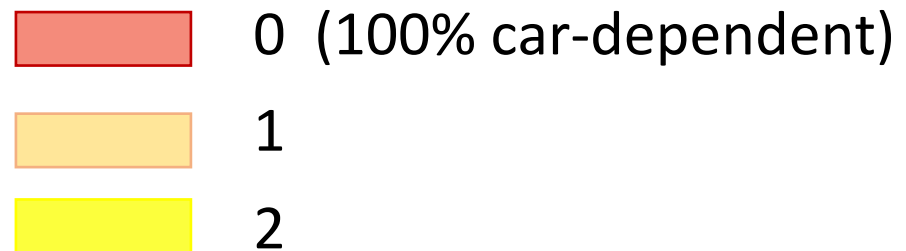
Major Intersection

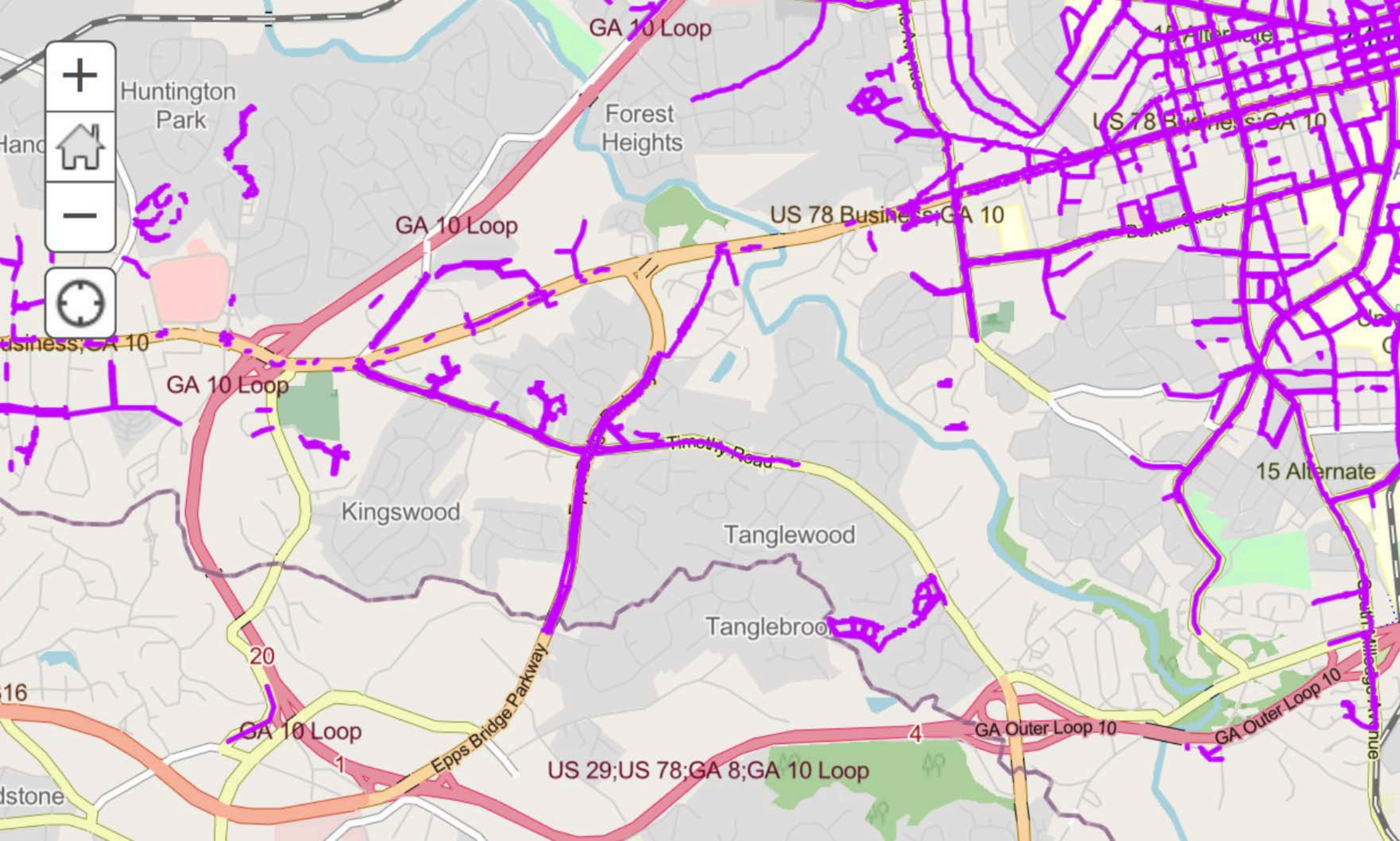


Timothy Road Neighborhoods are isolated and confined by lack of sidewalks and bike lanes



Number of sidewalks or safe bike routes that connect highlighted region to alternative transportation.





Timothy Road as a Multi-Modal Transportation Corridor



100' ROW



August 9, 2021

Athens-Clarke County SPLOST Program Management
ATTN: Candace Mobley
301 College Avenue, Suite 101
Athens, GA 30601

Dear Ms. Mobley,

On behalf of the neighborhoods along the Timothy Road Corridor and Timothy Forward, a neighborhood advocacy group, I am pleased to present this TSPLOST 2023 proposal to develop safe pedestrian and bicycle facilities from Atlanta Highway to the intersections at Loop 10, Macon Highway, and SR 441.

Data provided by ACCGov Traffic Engineering show there have been at least two fatalities and 426 injuries, resulting from 1,434 total crashes, across the past 8 years. Crashes happen all along the Timothy Road Corridor at intersections and driveways.

Timothy Forward came together in response to the constant dangers faced by corridor residents at intersections, crossings, neighborhood entrances, and approximately 50 private driveways. Transit users walk in weeds and dirt to get to their stops. Bicyclists are permitted to share the road with high-volume, speeding traffic but few are willing to face the risks. Sidewalk coverage south of Epps Bridge Parkway moves from one side of Timothy to the other until ending at Fox Trace Road. Residents south of Fox Trace Road – two miles to Macon Highway/SR 441 – have no option other than driving to leave their homes or neighborhoods. The road bends, the grade changes dramatically. There is no road shoulder for refuge, only drainage ditches to fall into. It is a poorly functioning roadway for all users.

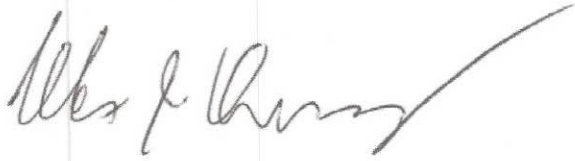
Timothy Road in its present state is a liability. This TSPLOST 2023 proposal will transform Timothy Road into an important asset: a welcoming gateway into Athens from the south, a safe route for all forms of transportation, and a critical piece of the County's Active Transportation Network. The plan begins with a pedestrian- and bike-friendly intersection with Atlanta Highway.

This project supports the TSPLOST 2023 Goals by encouraging economic growth, enhancing social well-being, and eliminating many short-distance vehicle trips. Moreover, it aligns with the Athens in Motion foundational mission of safety for all road users and explicit goals of Connectivity, Equity, More Users, Education, and Implementation.

The recent survey by the TSPLOST office of Atlanta Highway constituents for how to allocate 2018 pedestrian and bicycle improvement funds revealed overwhelming support for pedestrian and bicyclist facilities along the corridor, especially south of Epps Bridge Parkway. If approved by Mayor & Commission, approximately \$2 million will become available to begin developing the Timothy Road Multi-Modal Transportation Corridor project.

We are grateful to Transportation and Public Works staff for their expertise and support of our efforts to reimagine Timothy Road as both neighborhood street and transportation corridor. We appreciate the TSPLOST Citizens Advisory Committee for considering our funding request for this important and visionary project.

Respectfully submitted,

A handwritten signature in dark ink, appearing to read 'Alex J. Harvey', with a long, sweeping flourish extending to the right.

Alex J. Harvey
for Timothy Forward
160 Fox Trace Road
Athens, GA 30606

Attachment: Timothy Road Crash Statistics by Location for 2013-2021 (Source ACCGov Traffic Engineering)

Timothy Road	Crashes	Injuries	Deaths
West Side			
Atlanta Highway	364	102	
Academy Sports	13	2	
BB&T	1		
Timothy Woods	1		
Timothy Ct	2		
Avalon	17	5	
Highland	11	3	
Woody/Oakbend	46	17	
Swanson	4		
Epps Bridge Crossing	438	113	1
Pinewood/Cypress Manor Crossing	10	1	
Skyline	16	6	
Xavier	8	1	
Tanglewood	38	10	
Branford	6		1
Townswalk	10	1	
Township	14	5	
Manorhaven	12	5	
Autumnwood	32	11	
Loop inner on ramp	55	35	
East Side			
Golden Pantry	6	3	
Idlewilde	45	15	
Agua Linda	2	1	
Locos	1	1	
Timothy ES	1	0	
Benjamin	3		
Colleton	9	1	
Kirkwood	3	1	
Ruthwood	12	2	
Timothy Park	5	1	
Cypress Manor	10	1	
Wexford	23	8	
St George	17	5	
St James	19	6	
Fox Trace	8	6	
Rambling	19	3	
Cheatham	17	6	
Bowles	3		
Sheats	17	6	

River Club	1		
Timothy Baptist	3		
Tilson	10	4	
Rhodes	6	3	
Macon Highway	56	16	
Loop 4A	7	1	
Loop 4B	33	19	
TOTALS	1434	426	2