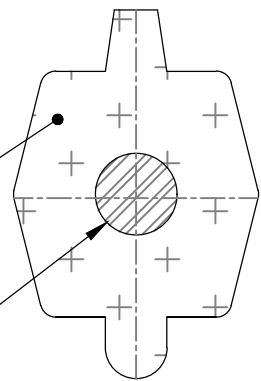


POLYPROPYLENE
PLASTIC

1/2" ϕ OR
NO. 3 DEFORMED
NP. GRADE 60
NQ. STEEL ROD



SECTION

STEPS SHALL BE PLACED INTO WET CONCRETE WALL DURING MANUFACTURE OR MORTORED INTO HOLES AFTER CONCRETE HAS SET.

Manhole Step
NTS

MH-11

| | | | | | | |
|--|---|---------------------|--------------------|---------------------|--|--|
| Standard Specification and Detail for: | | | | <i>Manhole Step</i> | | |
| GMD: NA | County: Athens-Clarke | State: Georgia | Date: August, 2019 | | | |
| Drawn by: KFM | The Unified Government of Athens-Clarke County Department of Public Utilities 124 E Hancock Ave Athens, Georgia 30601 | | | | | |
| Approved by: GJ | | | | | | |
| Scale: AS-SHOWN | Fax: 706-613-3198 | Voice: 706-613-3490 | | | | |